



Price
£360,000

Freehold

3x  1x  1x 

**Long Riding, Basildon,
Essex, SS14**



Main features

- 3 bedroom mid terrace house
- Beautifully presented throughout
- Good size, well maintained garden
- Excellent location for town centre and railway station
- Large driveway

Accommodation

GROUND FLOOR

Entrance Hallway

Lounge: 15'2 x 11'8 (4.63m x 3.56m)

Kitchen/Diner: 21'3 x 10'9 (6.48m x 3.28m)

FIRST FLOOR

Landing

Bedroom 1: 12'6 x 11'7 (3.81m x 3.53m)

Bedroom 2: 12'6 x 8'8 (3.81m x 2.64m)

Bedroom 3: 9'1 x 6'2 (2.77m x 1.88m)

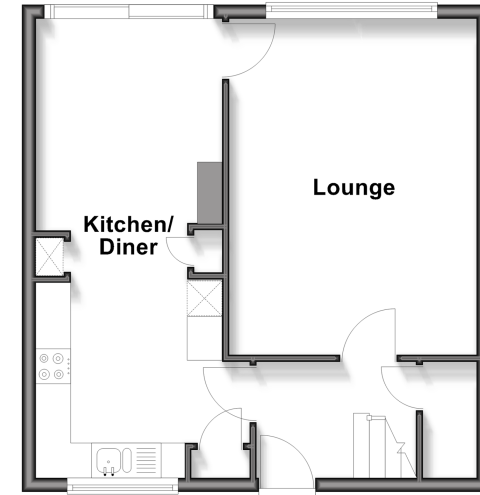
Bathroom

OUTSIDE

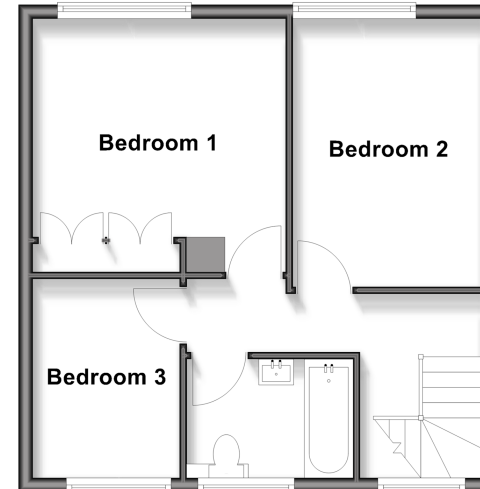
Rear Garden

Driveway

Ground Floor
Approx. 41.6 sq. metres (447.7 sq. feet)



First Floor
Approx. 42.3 sq. metres (455.1 sq. feet)



Call Basildon - 01268 293993 ■ douglasallen.co.uk

- A private rental licensing scheme applies to some properties in this area, please check with the Local Authority before proceeding
- Legal advice should be taken to verify fixtures/fittings, planning, alterations and/or lease details
- Appliances & services are untested, dimensions are approximate and floor plans are not to scale



50509579/20260221/MB/GW