

**Dewey Lane, Brixton, SW2**

2 bedroom maisonette for sale

**£475,000**

Leasehold

## Property Details

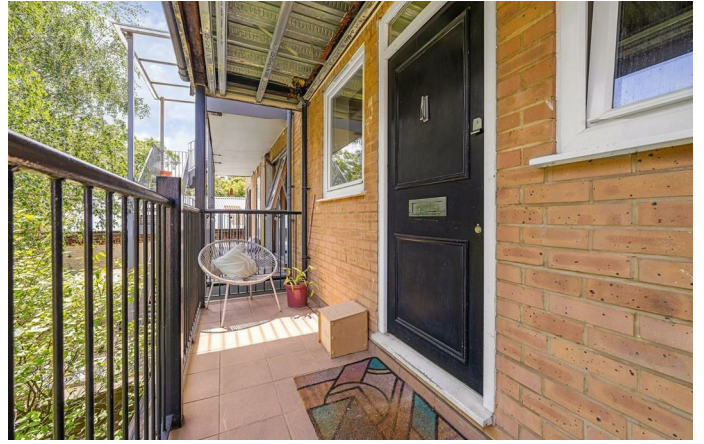
A fantastic two double bedroom maisonette with a private terrace, own entrance and almost 700 sq ft of internal living space. Tucked away on a quiet side street within a private gated development, this stylish home benefits from independent shops and eateries on the doorstep. Arranged over two floors, the property offers a genuine house-like feel, with the living space and bedrooms thoughtfully separated. The upper floor is dedicated to modern living, with a superb open-plan kitchen and reception room flooded with natural light from multiple skylights. The contemporary kitchen provides excellent storage and workspace, while doors open onto a private terrace — the perfect spot for morning coffee, summer dining or relaxing under the stars. Downstairs, two well-proportioned double bedrooms sit either side of a modern bathroom, offering privacy and comfort. Further benefits include secure bike storage within the gated grounds.

## Features

- Two double bedrooms
- Private terrace
- Split-level maisonette
- Private entrance
- Almost 700 square feet of internal space
- Tucked away in a gated development
- Independent shops and eateries on the doorstep
- Central Brixton and Herne Hill both a ten-minute stroll
- Brockwell Park a three-minute walk

Council tax band C    EPC rating C (73)

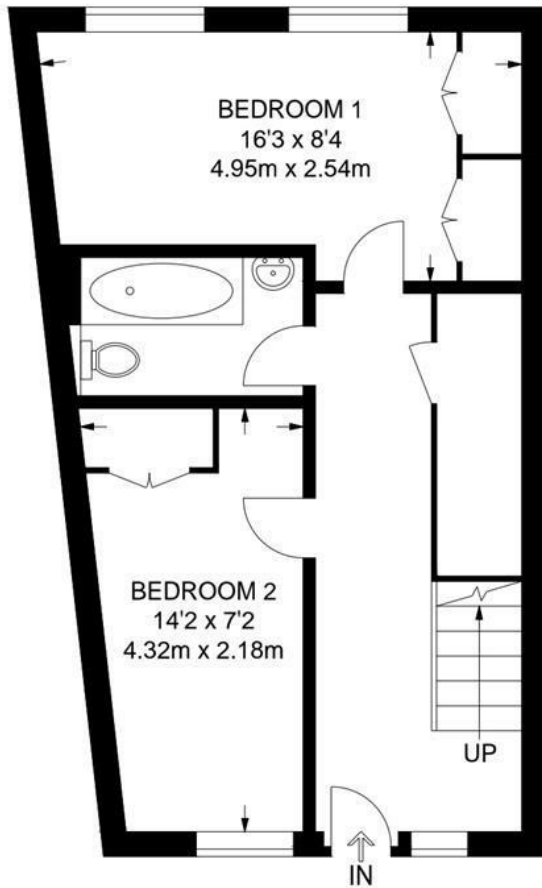




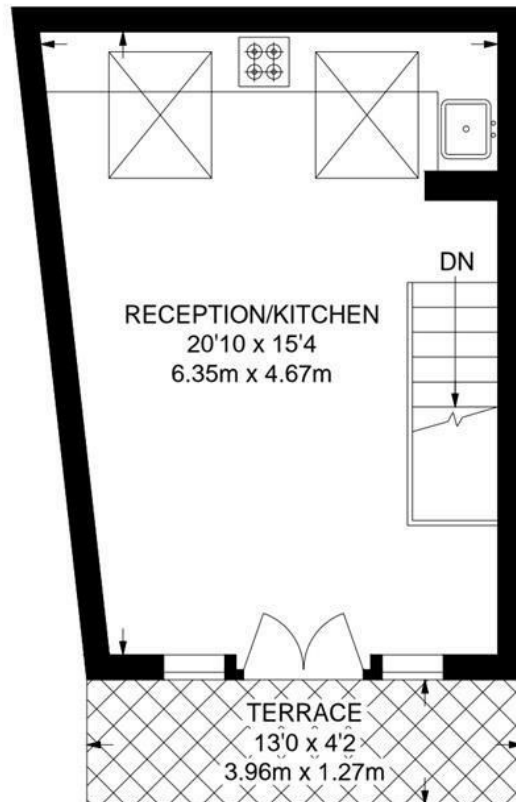
Dewey Lane, Brixton, SW2

**Dewey Lane, SW2**  
**2 Bedroom Flat**

APPROXIMATE GROSS INTERNAL AREA: **696 SQ FT / 64.7 SQ M**



**FIRST FLOOR**



**SECOND FLOOR**



While we try our very best, floor plans are produced as a guide only and we take no responsibility for the precise accuracy with which any property is represented.

Dewey Lane, Brixton, SW2

