



Parkside

Knightsbridge, SW1X

£14,733 per month
(£3,399.92 per week)

Elegant lateral apartment of circa 2246 square feet comprising part of a stunning Victorian mansion development overlooking Hyde Park. The property has been recently renovated and is ideal for both entertaining and family living.



Parkside

Knightsbridge, SW1X

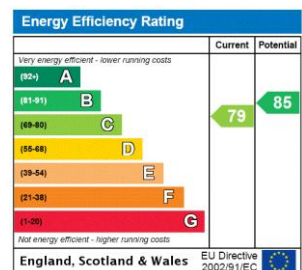
- Air Conditioning
- Wooden Floors
- 24 hour Porter
- Overlooking Hyde park
- Lateral Apartment
- Approx 2,246 sq ft



Elegant lateral apartment of circa 2246 square feet comprising part of a stunning Victorian mansion development overlooking Hyde Park. The property has been recently renovated and is ideal for both entertaining and family living.

Features include wood flooring throughout, air-conditioning, private balcony overlooking Hyde Park and 24-hour onsite portorage. The accommodation comprises two large receptions, entrance hallway, four double bedrooms, three bathrooms, eat-in kitchen and utility room.

Minimum Term: 12 months
Deposit Required: £20,399.54
Local Authority: City of Westminster
Council Tax Band: H
EPC Rating: C
Furnished

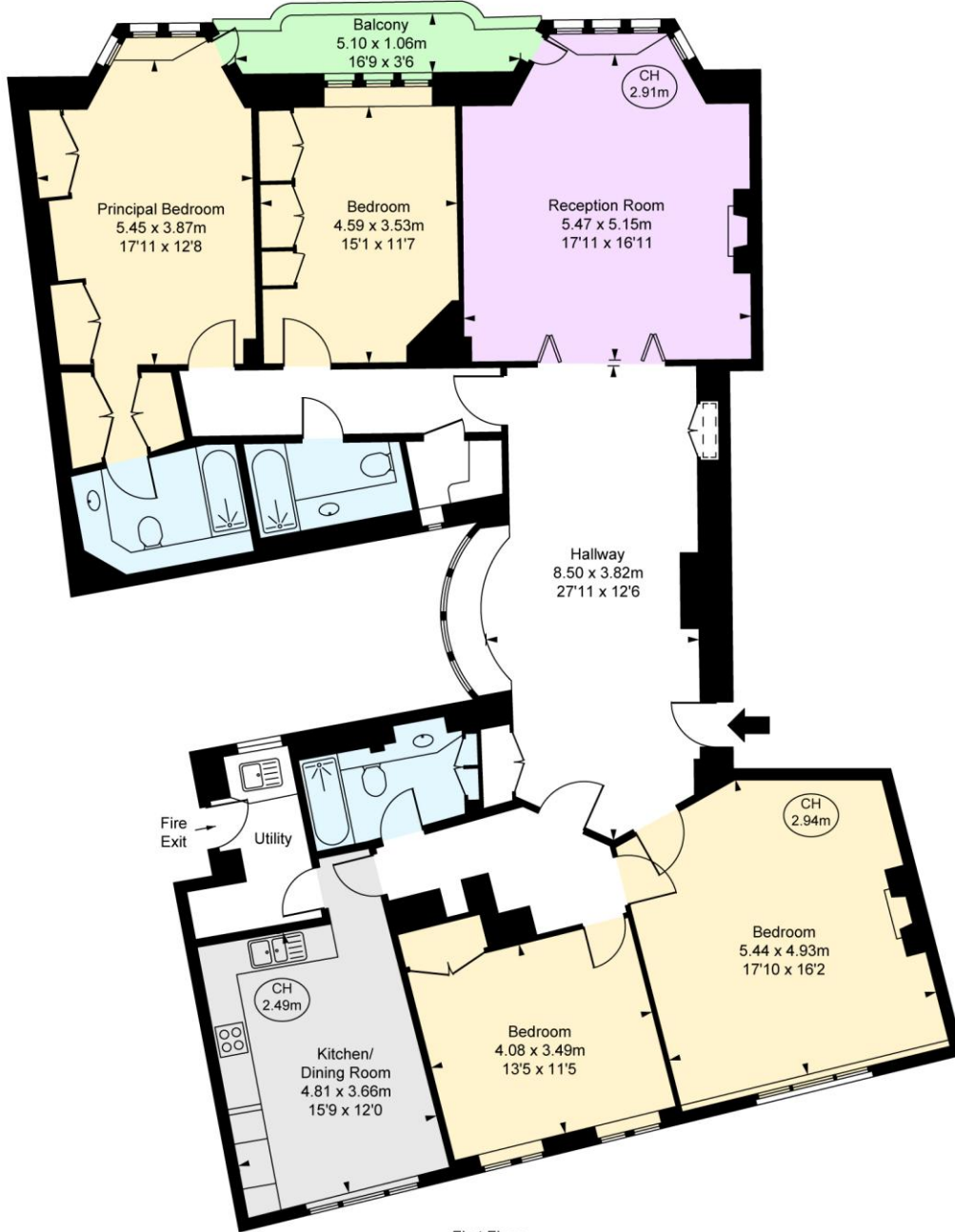


Chestertons Knightsbridge & Belgravia Lettings

31 Lowndes Street
 London
 SW1X 9HX
 knightsbridglettingsusers@chestertons.co.uk
 02072353530
 chestertons.co.uk

Additional tenant charges apply (fees apply to non-AST tenancies only)
 Tenancy Agreement Fee: £300
 References per Tenant/Guarantor: £60
 Inventory check (approx. £100 – £250 inc. VAT)
 chestertons.co.uk/property-to-rent/applicable-fees

Parkside,
 Knightsbridge, SW1X
 Approximate Gross Internal Area
197.68 sq m / 2,128 sq ft
 (Including restricted height
 under 1.5m □ = □ = □)
 (CH = Ceiling Heights)



First Floor

This plan is not to scale. It is for guidance and not for valuation purposes.
 All measurements and areas are approximate only, and have been prepared in accordance with the current edition of the RICS Code of Measuring Practice.
 © Fulleren Performance.

Chesterton UK Services Limited trading as Chestertons for themselves and for the vendor of this property whose agents they are, give notice that (i) these particulars do not constitute any part of an offer or contract, (ii) all statements contained within these particulars are made without responsibility on the part of Chestertons or the vendor, (iii) whilst made in good faith, none of the statements contained within these particulars are to be relied upon as a statement or representation of fact, (iv) any intending purchasers must satisfy themselves by inspection or otherwise as to the correctness of each of the statements contained within these particulars, (v) the vendor does not make or give either Chestertons or any person in their employment any authority to make or give representation or warranty whatsoever in relation to this property. Wide angle lenses may be used. ©Copyright Chestertons | Chesterton Global Ltd | Registered Office 5th Floor, The Lantern, 75 Hampstead Road, London, NW1 2PL Registered Company Number 05334580.



This paper is
 100% recyclable