



**Copperbox High Street, Harborne BIRMINGHAM B17 9BF**

**welcome to**

## **Copperbox High Street, Harborne BIRMINGHAM**

\*\*\* immaculate one-bedroom stunning flat \*\*\* chain free \*\*\* Harborne area \*\*\* located within Harborne High Street \*\*\* convenient access to a wide range of local amenities \*\*\* supermarkets \*\*\* independent cafés \*\*\* restaurants \*\*\*

### **Agent Note**

This property is council tax band A.  
Lobby doors are due to be fixed (15/04/26)

### **Entrance Lobby**

Stairs to all floors and lift access.

### **Kitchen/Living/Bedroom**

19' 8" x 19' ( 5.99m x 5.79m )

Large double-glazed window, built in wardrobe with double sliding doors, cupboard housing meters, further cupboard with wall mounted boiler and storage space, laminate flooring, ceiling spotlights, range of wall & base units with worktops over, washer/dryer, sink with mixer tap, integrated microwave/oven & hob.

### **Shower Room**

6' 9" x 5' 8" ( 2.06m x 1.73m )

Ceiling spotlights, shower cubical with double glass doors, wash hand basin with mixer tap and storage beneath, large mirror above, low level flush w/c, tiled to splash-prone areas and tiled floor.





***check out more properties at*** [shipways.co.uk](https://shipways.co.uk)



welcome to

## Copperbox High Street, Harborne BIRMINGHAM

- One Bedroom Apartment
- 2nd Floor
- Secure Parking
- Lift Access
- Located on Harborne High Street

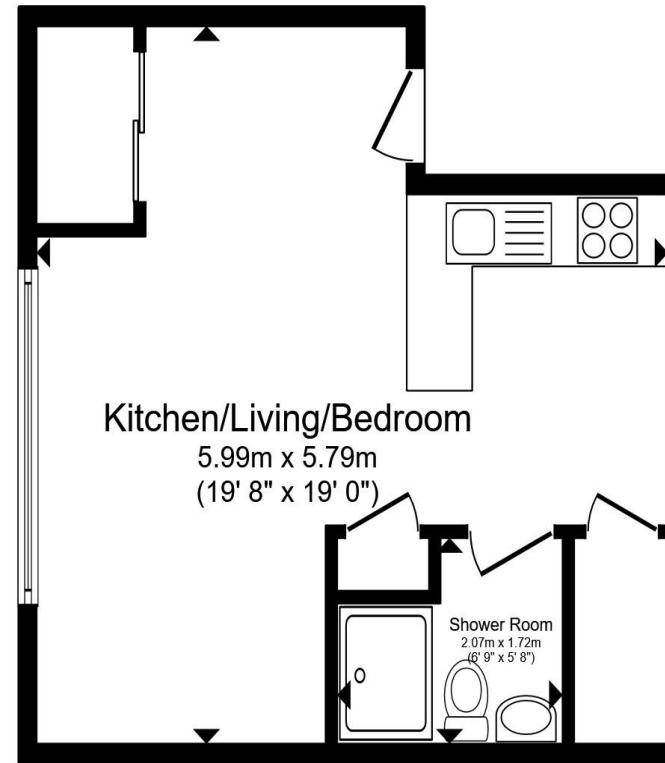
Tenure: Leasehold EPC Rating: C

Council Tax Band: A Service Charge: 1000.00

Ground Rent: 350.00

This is a Leasehold property with details as follows; Term of Lease 148 years from 01 Jan 2018. Should you require further information please contact the branch. Please Note additional fees could be incurred for items such as Leasehold packs.

offers in the region of **£180,000**



Total floor area 31.3 m<sup>2</sup> (337 sq.ft.) approx

This floor plan is for illustrative purposes only. It is not drawn to scale. Any measurements, floor areas (including any total floor area), openings and orientation are approximate. No details are guaranteed, they cannot be relied upon for any purpose and they do not form part of any agreement. No liability is taken for any error, omission or misstatement. A party must rely upon its own inspection(s). Powered by [www.propertybox.io](http://www.propertybox.io)



check out more properties at [shipways.co.uk](http://shipways.co.uk)



Property Ref:  
HBN112297 - 0003

1. MONEY LAUNDERING REGULATIONS Intending purchasers will be asked to produce identification documentation at a later stage and we would ask for your co-operation in order that there is no delay in agreeing the sale. 2. These particulars do not constitute part or all of an offer or contract. 3. The measurements indicated are supplied for guidance only and as such must be considered incorrect. Potential buyers are advised to recheck measurements before committing to any expense. 4. We have not tested any apparatus, equipment, fixtures or services and it is in the buyers interest to check the working condition of any appliances. 5. Where an EPC, or a Home Report (Scotland only) is held for this property, it is available for inspection at the branch by appointment. If you require a printed version of a Home Report, you will need to pay a reasonable production charge reflecting printing and other costs. 6. We are not able to offer an opinion either written or verbal on the content of these reports and this must be obtained from your legal representative. 7. Whilst we take care in preparing these reports, a buyer should ensure that his/her legal representative confirms as soon as possible all matters relating to title including the extent and boundaries of the property and other important matters before exchange of contracts.

Shipways is a trading name of Sequence (UK) Limited which is registered in England and Wales under company number 4268443, Registered Office is Cumbria House, 16-20 Hockliffe Street, Leighton Buzzard, Bedfordshire, LU7 1GN. VAT Registration Number is 500 2481 05.

**Not for marketing purposes INTERNAL USE ONLY**



**0121 427 3264**



[harborne@shipways.co.uk](mailto:harborne@shipways.co.uk)



172 High Street, Harborne, BIRMINGHAM,  
West Midlands, B17 9PP



[shipways.co.uk](http://shipways.co.uk)