



📍 9 Jockey Lane, Bromham, Wiltshire, SN15 2EZ

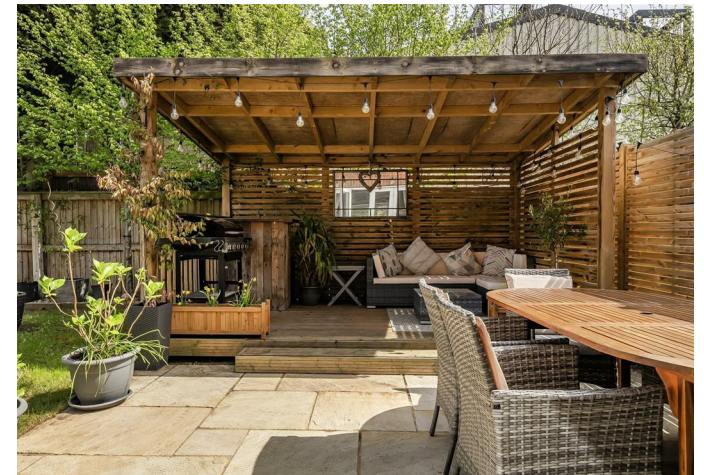
🏠 £450,000

A modern, well-presented 3-bedroom semi-detached home in the popular Wiltshire village of Bromham Boasting a car port and excellent entertaining space, inside and out.

- Immaculately presented
- 3-bedroom semi-detached home
- Popular village location
- Modern home
- Excellent entertaining space
- Carport
- Landscaped rear garden with covered pergola
- En-suite to principal bedroom

🏡 Freehold

🏠 EPC Rating B



A well-presented three-bedroom semi-detached home, built in 2018, set within the popular village of Bromham.

The property offers stylish, well-balanced accommodation ideally suited to family living. Benefits include underfloor heating to the ground floor and bathrooms, a car port with private parking, and a beautifully maintained, rear garden.

The accommodation is accessed via a central hallway leading to the principal living areas. A key feature is the open-plan kitchen/dining room, which connects to the living room via double doors, creating a bright and versatile space ideal for both everyday living and entertaining. The kitchen is well-appointed with a range of cupboards and worktops, along with integrated appliances including a dishwasher, oven, microwave, gas hob, and a fridge freezer (replaced in 2024). Double doors open directly onto the rear garden, enhancing the sense of indoor-outdoor living, complete with an attractive covered decked pergola.

To the front, a separate reception room provides a comfortable and flexible living space, which can either be opened up to the kitchen/dining area or closed off for a more private setting. A spacious utility room with external access to the driveway, along with a large cloakroom, further enhances the practicality of the home.

Upstairs, three generous double bedrooms are arranged around a central landing. The principal bedroom benefits from an en-suite shower room, while the remaining bedrooms are served by a modern family bathroom. The second bedroom is particularly spacious and is currently arranged as a double bedroom with a separate study area, though it could easily accommodate two double beds.

Outside, the rear garden has been designed for ease of maintenance and entertaining, it features a covered decked pergola (built in 2023), providing an excellent space for outdoor dining and entertaining. The property also benefits from a car port offering off-road parking and a lockable shed for additional storage.

Situation

Bromham is a highly sought-after village with a strong sense of community. Residents enjoy a range of local activities, from scenic countryside walks to exploring nearby historic landmarks such as Roundway Hill. The village offers a variety of amenities, including a well-regarded Church of England primary school and pre-school, two popular pubs, a curry house, a butcher's shop (also providing everyday essentials), a farm shop, a twice-weekly post office, and a café/bar within the new clubhouse opened in June 2025, as well as a local church.

For commuters, Chippenham railway station is less than nine miles away.

Property information

We are advised all mains services are connected.

Agents note: The property is situated in a conservation area.

Tenure: Freehold

Council tax: D

EPC rating: B



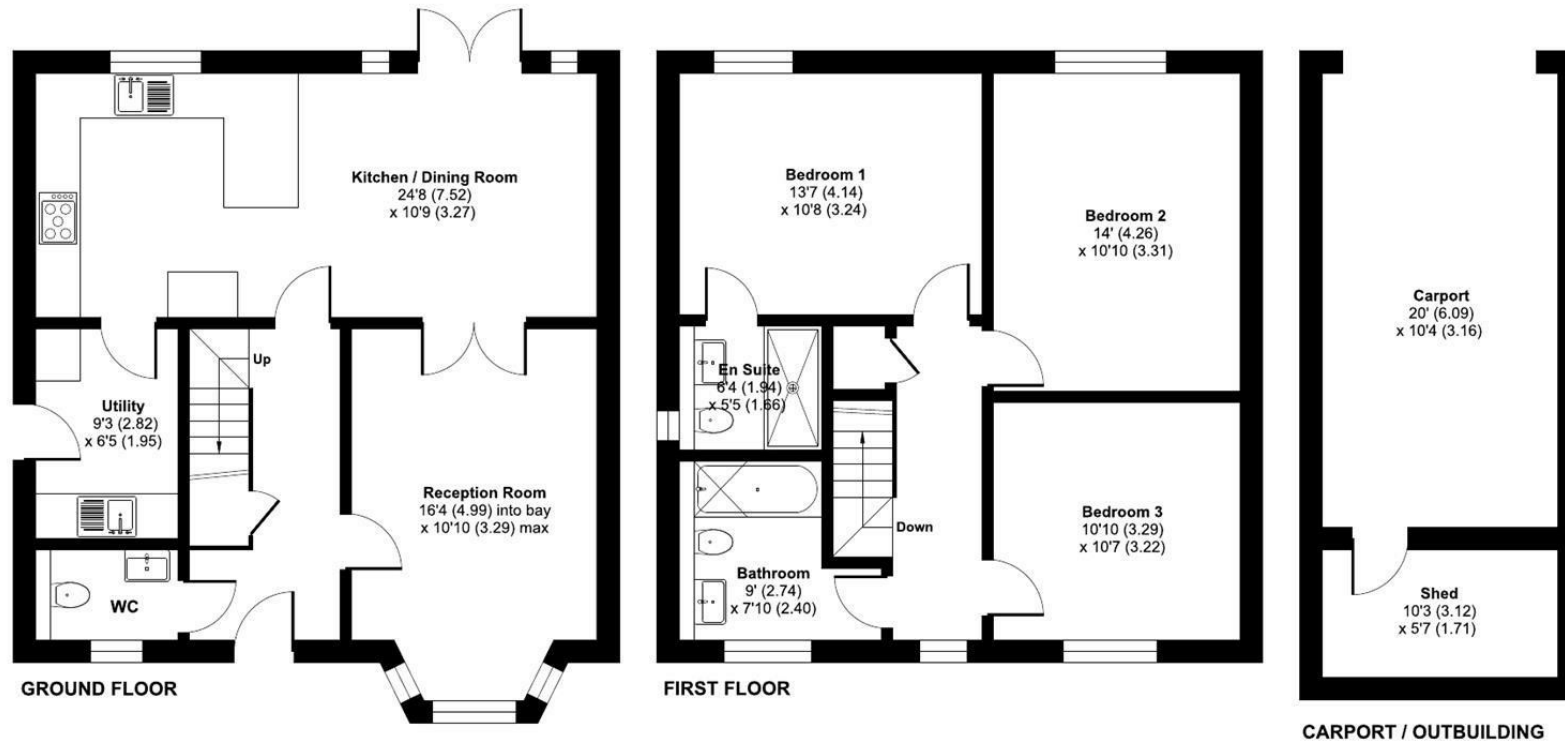
Jockey Lane, Bromham, Chippenham, SN15

Approximate Area = 1245 sq ft / 115.6 sq m(exclude carport)

Outbuilding = 58 sq ft / 5.3 sq m

Total = 1303 sq ft / 120.9 sq m

For identification only - Not to scale



 Floor plan produced in accordance with RICS Property Measurement 2nd Edition, Incorporating International Property Measurement Standards (IPMS2 Residential). © nichecom 2026. Produced for Strakers. REF: 1436419

Disclaimer These particulars, whilst believed to be accurate are set out as a general outline only for guidance and do not constitute any part of an offer or contract. Intending purchasers should not rely on them as statements of representation of fact, but must satisfy themselves by inspection or otherwise as to their accuracy. No person in this firm's employment has the authority to make or give any representation or warranty in respect of the property. All measurements and distances are approximate only. Your home is at risk if you do not keep up repayments on a mortgage or other loan secured on it.