



barnard marcus

St. Hughes Close, London SW17 7UE

Welcome to St. Hughes Close, London

An Immaculately Presented Three-Bedroom Family Home with Generous Private Garden

This beautifully arranged three-bedroom residence offers an elegant balance of contemporary living and well-proportioned accommodation, thoughtfully laid out across two floors and extending to approximately 734 sq ft.

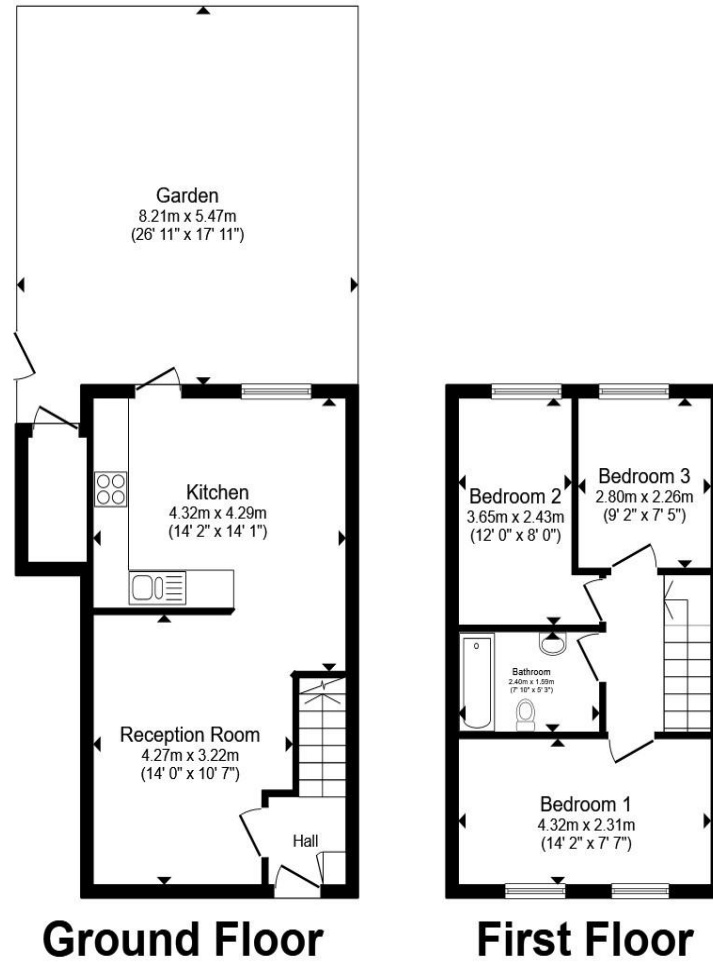
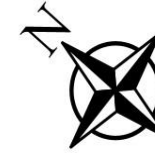
The ground floor welcomes you into a refined reception room, ideal for both relaxed everyday living and entertaining. To the rear, a stylish and well-appointed kitchen enjoys direct access to the garden, creating a seamless connection between indoor and outdoor space. The kitchen is generously sized, offering excellent storage and preparation space while overlooking the rear aspect.

Upstairs, the first-floor hosts three well-proportioned bedrooms, including a spacious principal bedroom and two further rooms perfectly suited for family, guests, or home office use. A modern family bathroom is centrally positioned to serve all bedrooms with ease.

One of the home's standout features is the long private rear garden, extending to approximately 26 feet, providing an enviable outdoor retreat ideal for alfresco dining, entertaining, or quiet enjoyment.

This property represents a superb opportunity for discerning buyers seeking a stylish, well-laid-out home with excellent living space and outdoor appeal.





Total floor area 68.2 m² (734 sq.ft.) approx

This floor plan is for illustrative purposes only. It is not drawn to scale. Any measurements, floor areas (including any total floor area), openings and orientation are approximate. No details are guaranteed, they cannot be relied upon for any purpose and they do not form part of any agreement. No liability is taken for any error, omission or misstatement. A party must rely upon its own inspection(s). Powered by www.propertybox.io

Welcome to

St. Hughes Close, London

- Three double bedrooms
- Eat-in kitchen
- Generous lounge
- Large rear garden mostly laid to lawn with a patio
- Chain Free!!!

Tenure: Freehold EPC Rating: C

Council Tax Band: E

£650,000



check out more properties at [barnardmarcus.co.uk](https://www.barnardmarcus.co.uk)

Please note the marker reflects the postcode not the actual property



Property Ref:
TTG108032 - 0003

1. MONEY LAUNDERING REGULATIONS Intending purchasers will be asked to produce identification documentation at a later stage and we would ask for your co-operation in order that there is no delay in agreeing the sale. 2. These particulars do not constitute part or all of an offer or contract. 3. The measurements indicated are supplied for guidance only and as such must be considered incorrect. Potential buyers are advised to recheck measurements before committing to any expense. 4. We have not tested any apparatus, equipment, fixtures or services and it is in the buyers interest to check the working condition of any appliances. 5. Where an EPC, or a Home Report (Scotland only) is held for this property, it is available for inspection at the branch by appointment. If you require a printed version of a Home Report, you will need to pay a reasonable production charge reflecting printing and other costs. 6. We are not able to offer an opinion either written or verbal on the content of these reports and this must be obtained from your legal representative. 7. Whilst we take care in preparing these reports, a buyer should ensure that his/her legal representative confirms as soon as possible all matters relating to title including the extent and boundaries of the property and other important matters before exchange of contracts.

Barnard Marcus is a trading name of Sequence (UK) Limited which is registered in England and Wales under company number 4268443, Registered Office is Cumbria House, 16-20 Hockliffe Street, Leighton Buzzard, Bedfordshire, LU7 1GN. VAT Registration Number is 500 2481 05.



020 8682 1161



Tooting@barnardmarcus.co.uk



248 Upper Tooting Road, Tooting, London,
SW17 7EX



[barnardmarcus.co.uk](https://www.barnardmarcus.co.uk)