



Colonnade Gardens, W3

£325,000

An elegant ground-floor maisonette situated within a gated development. The flat is in excellent condition throughout and further benefits from shared garden spaces and roof terrace for residents of Colonnade Gardens, making it ideal for those seeking green space within a gated community.

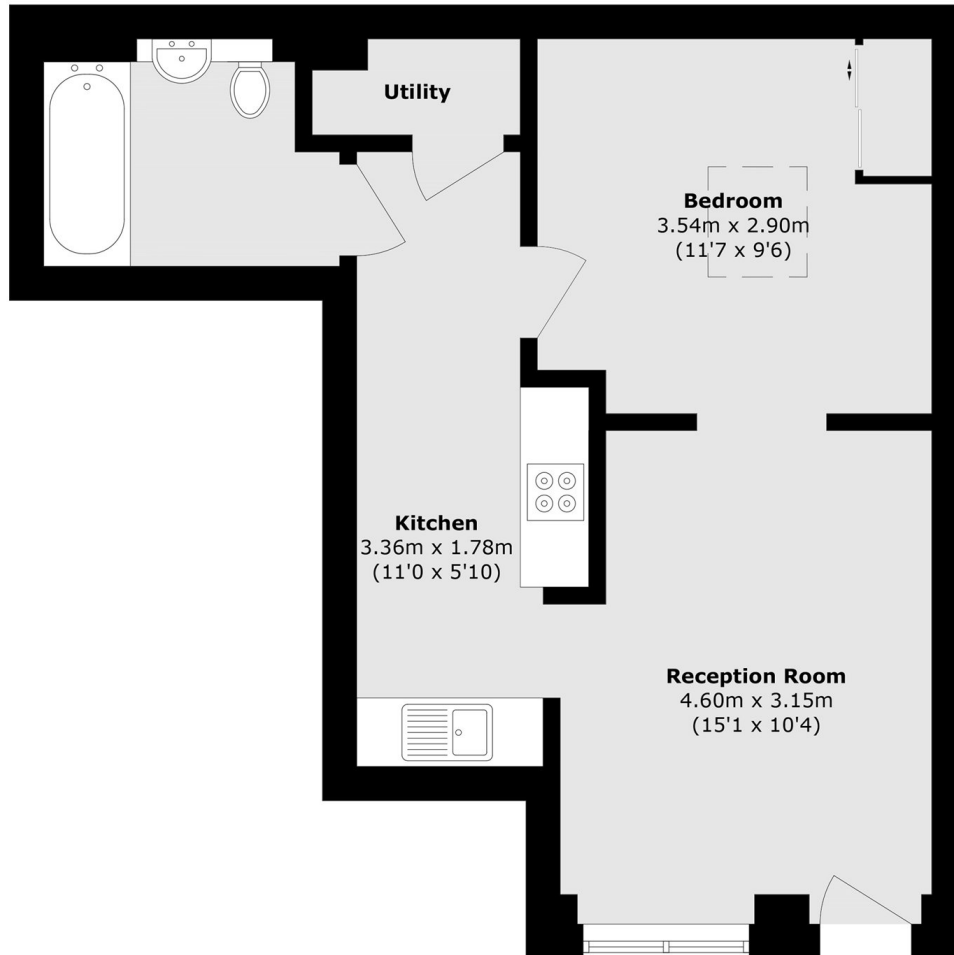
Located within walking distance to Wendall Park and just over one mile to Turnham Green station (Piccadilly and District line). Shepherd's Bush Station (Central Line) and Shepherd's Bush Market Station (Circle and Hammersmith & City Lines) 1.5m. Uniquely positioned nearby a parade of independent cafe's and supermarkets with further convenience into Westfields shopping centre.

Features

One Double Bedrooms
Private Entrance
Private Balcony

Gated Development
Low Service Charge Cost
Askew Village Borders

Colonnade Gardens, London, W3



Total area (approx.): 41.9 sq. m (451.0 sq. ft)