

Whitfield Street, W1T

£726 Per week

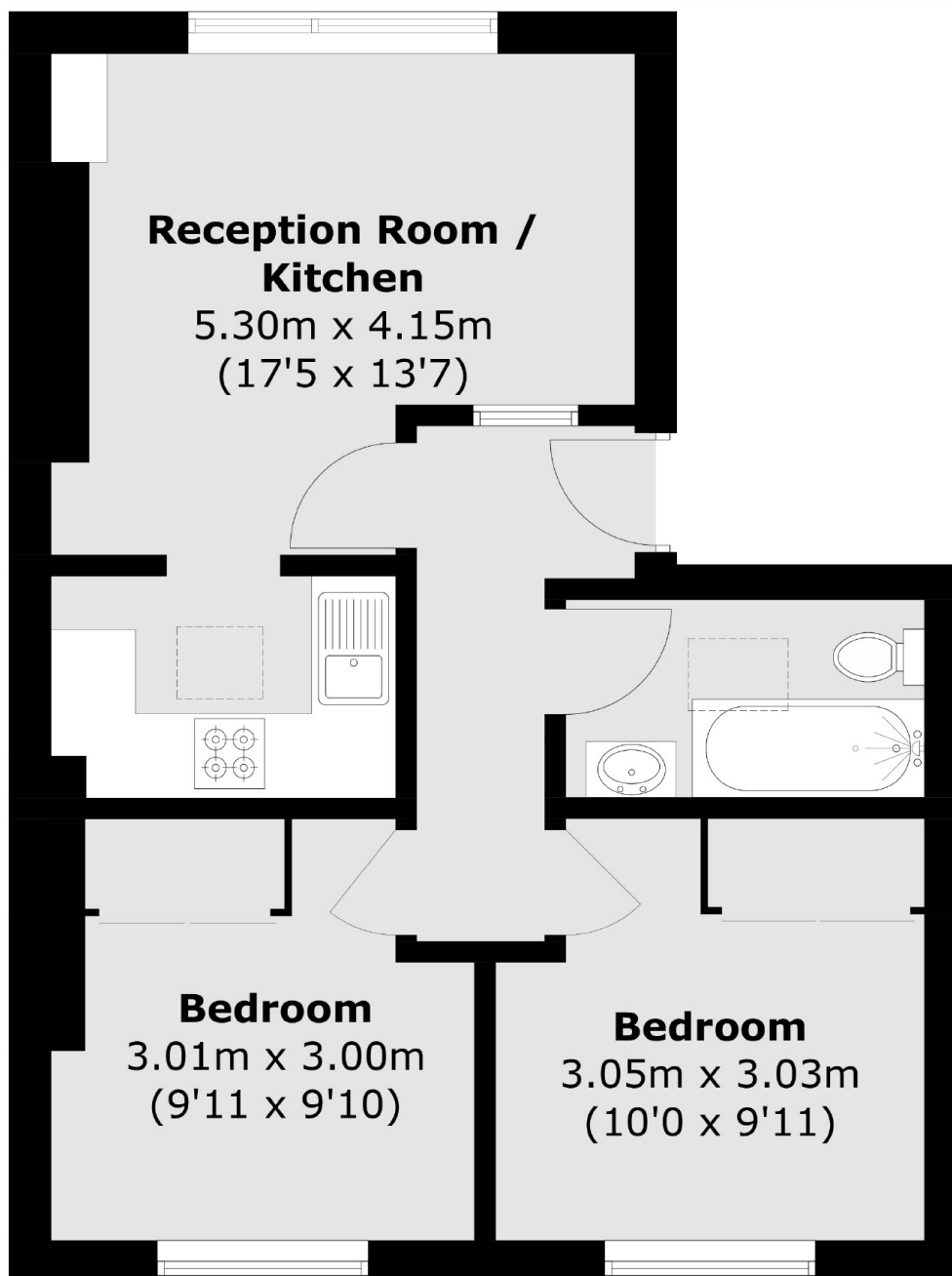
A bright, well presented two bedroom apartment on the third floor of this well maintained period building conveniently located close to Goodge Street, Warren Street and Oxford Street.

Whitfield Street is quietly tucked away just behind the famous Fitzroy Square and a few yards from Tottenham Court Road.

Features

- Two Bedrooms
- First Floor
- Period Building
- Wooden Floors
- Separate Kitchen
- Bathtub

**Whitfield Street,
London, W1T**



Third Floor

Total area (approx.): 44.6 sq. m (480.1 sq. ft)