

Fletcher & Company

The Cottage St. John's Road, Matlock Bath, Matlock, DE4 3PQ

Offers Around £695,000

Freehold



- Charming Stone-Built Detached Cottage
- Set in Approximately 8 Acres of Beautiful Woodland
- Spacious Lounge with Cast Iron Stove
- Superb Entertaining Area Incorporating Bar & Spa
- Fabulous Conservatory
- Breakfast Kitchen
- Three First Floor Bedrooms & Bathroom
- Rarity on the Market
- Viewing Highly Recommended





Summary

Charming stone-built, three bedroom detached cottage set within approx. eight acres of woodland.

The cottage itself offers much character with accommodation comprising a spacious lounge with feature fireplace, conservatory/dining room and kitchen. The first floor landing leads to three bedrooms and bathroom.

The property is approached through a five-bar gate onto a private tree-lined driveway which culminates in a large car standing area for multiple vehicles.

As mentioned, the property sits on a completely private plot surrounded by attractive woodland and the main gardens to the property lie in front with a terrace/patio and steps leading down to a good sized lawn with a fabulous entertaining area incorporating a bar, spa and a covered seating area.

F&C

The Location

The property's location in Matlock Bath is set within beautiful scenery in which the River Derwent cuts through and offers some very pleasant walks as well as some superb walks in the surrounding open countryside with some fabulous view points on the cliff top edges. Matlock Bath is popular with tourists and offers an excellent range of facilities including shops, cafés, restaurants, Gulliver's Kingdom and the Heights of Abraham. Neighbouring Matlock town also offers an excellent range of amenities with a further selection of shops and a large supermarket. Also worthy of a visit is Cromford and Wirksworth along with Carsington Water.

Ground Floor

Porch

2'11" x 2'9" (0.91 x 0.85)

Panelled entrance door with double glazed and leaded inset provides access into the porch with central heating radiator, cloaks cupboard and multipaned door to the spacious lounge.

Spacious Lounge

12'8" x 8'2" (3.87 x 2.49)

With a fabulous exposed stone chimney breast incorporating stone hearth and timber lintel with a cast iron solid fuel stove, wood floor covering, feature exposed beams to ceiling, staircase leading to the first floor with feature balustrade, sealed unit double glazed window to the rear with matching window to the front and open doorway into the conservatory.



Conservatory

14'11" x 8'9" (4.57 x 2.67)

Sealed unit double glazed construction with clear glass windows and roof offering fabulous views over the mature woodland and garden beyond, feature tiled floor and sliding patio doors opening onto the garden.



Breakfast Kitchen

12'8" x 8'2" (3.87 x 2.49)

With L-shaped solid wood worktop and tiled surrounds, inset stainless steel sink unit, fitted base cupboards and drawers, inset four plate gas hob with built-in oven beneath, integrated fridge/freezer, dishwasher and washing machine, central heating radiator, recessed ceiling spotlighting, sealed unit double glazed window to the front, window to the side and panelled and multipaned stable door to the rear.



First Floor

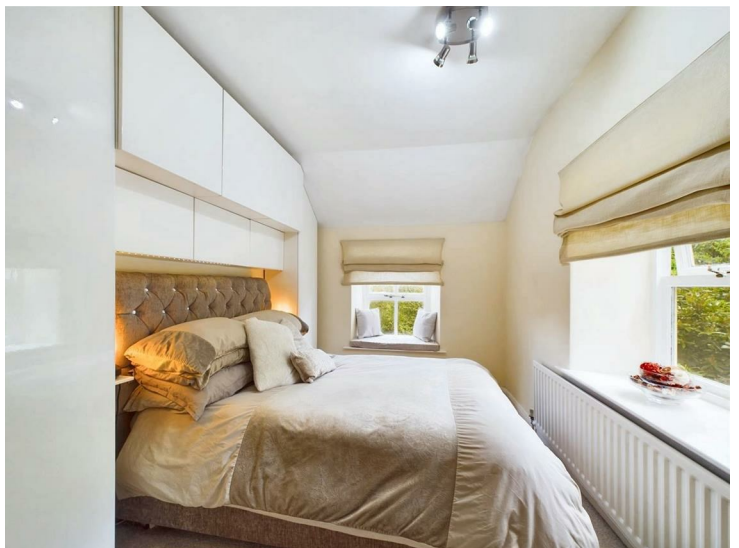
Landing

Split-level landing with sealed unit double glazed window to the rear, storage cupboard, recessed spotlighting and latched doors to three bedrooms and bathroom.

Bedroom One

12'11" x 8'2" (3.94 x 2.51)

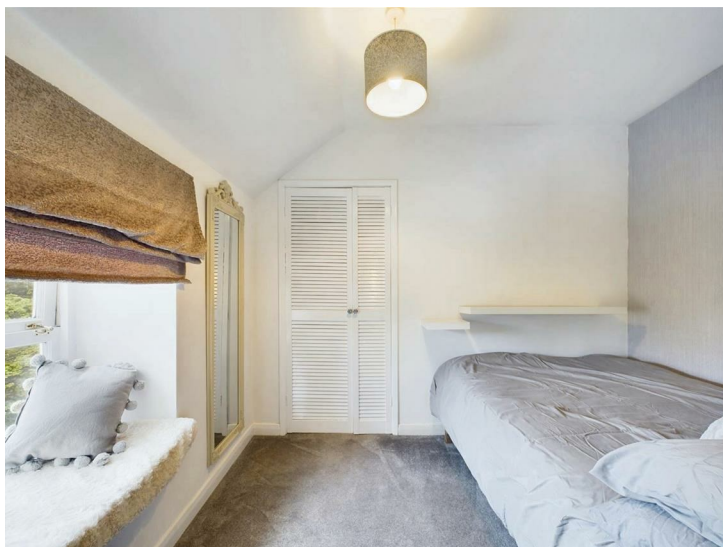
With central heating radiator and sealed unit double glazed windows to the side and front.



Bedroom Two

9'9" x 6'8" (2.98 x 2.04)

With central heating radiator, useful storage cupboard and sealed unit double glazed window to the front with fabulous views.



Bedroom Three

7'8" x 5'8" (2.36 x 1.74)

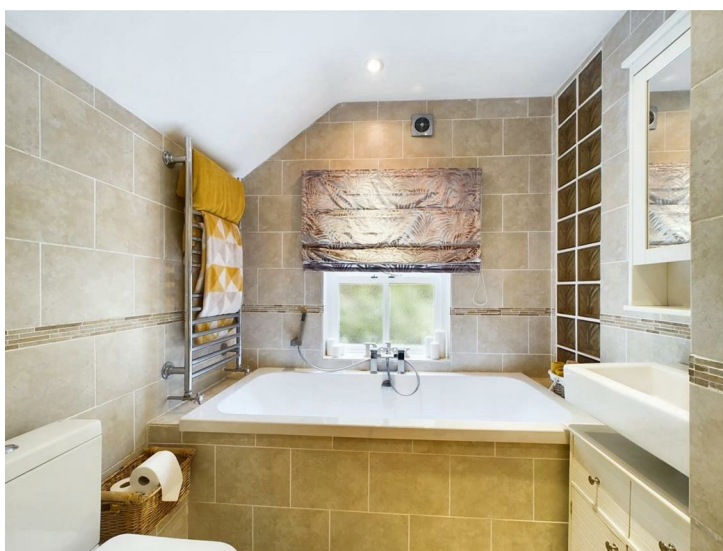
With central heating radiator and sealed unit double glazed windows to the side and front, again with fabulous views.



Bathroom

7'8" x 7'0" (2.34 x 2.14)

Well appointed and fully tiled with a white suite comprising low flush WC, wash handbasin, bath with shower attachment, chrome towel radiator, recessed ceiling spotlighting and sealed unit double glazed window to the side.



Outside

Without doubt, a true feature of this sale is the position in which the property commands set within approximately eight acres of mainly woodland, approached off St John's Road via a five-bar gate which leads to a private tree-line driveway and culminates in a large parking area, ideal for multiple vehicles.

The woodland offers complete privacy from neighbouring properties and attracts lovely wildlife. The cottage itself features a patio/terrace immediately in front with steps leading down to a lower-level lawn and fabulous entertaining area incorporating a bar, spa and covered seating area as well as a WC.



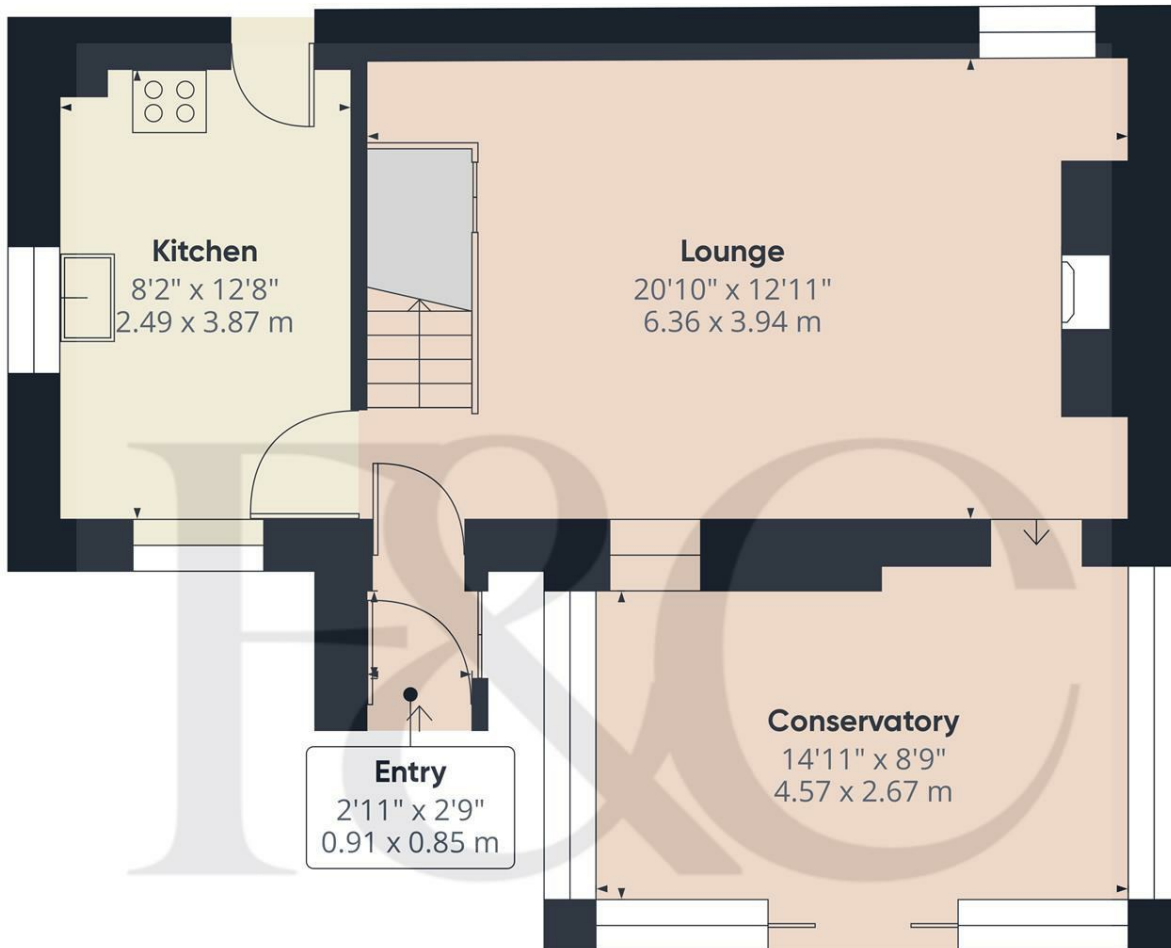
Bar/Spa



Council Tax Band D - Derbyshire Dales







Floor 0

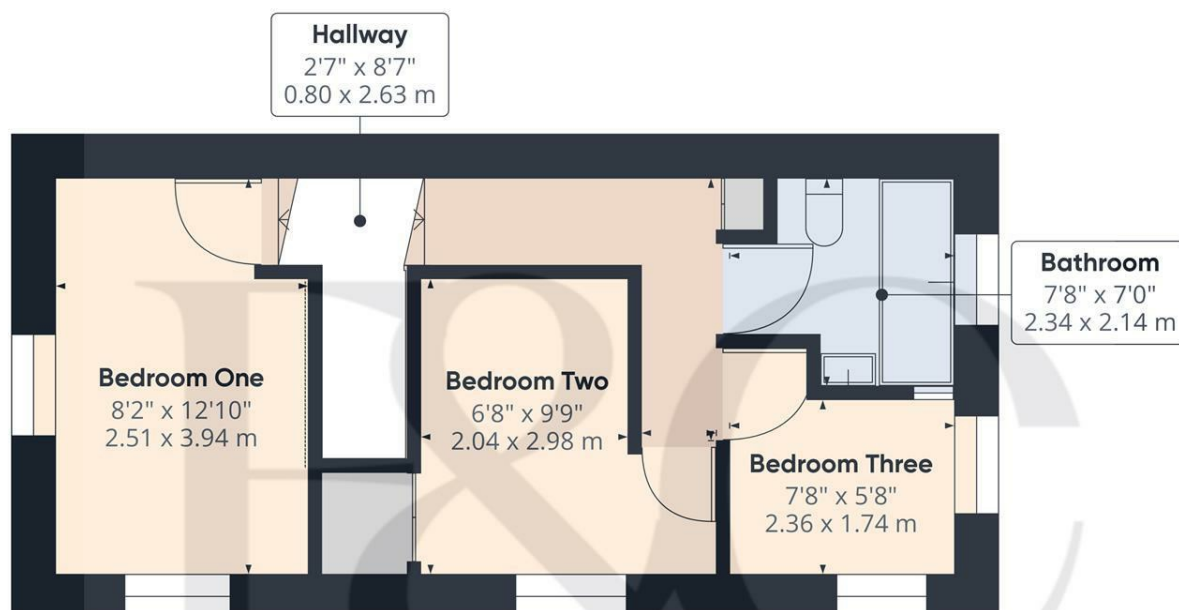
Approximate total area⁽¹⁾

528.69 ft²
49.12 m²

(1) Excluding balconies and terraces

While every attempt has been made to ensure accuracy, all measurements are approximate, not to scale. This floor plan is for illustrative purposes only.

GIRAFFE360



Floor 1

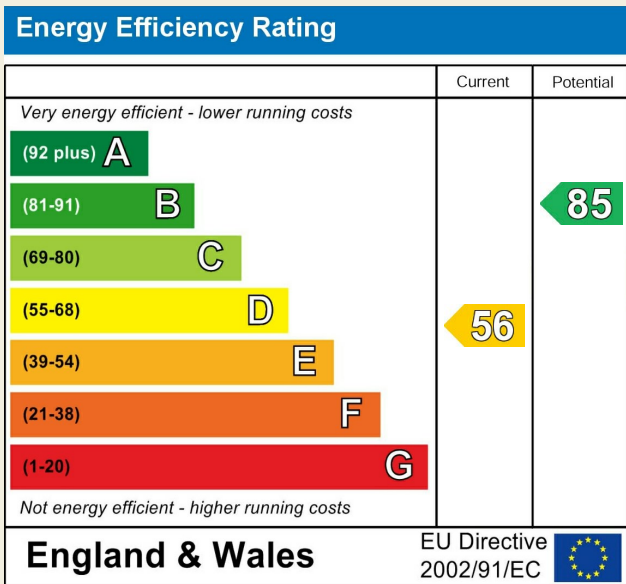
Approximate total area⁽¹⁾

340.28 ft²
31.61 m²

(1) Excluding balconies and terraces

While every attempt has been made to ensure accuracy, all measurements are approximate, not to scale. This floor plan is for illustrative purposes only.

GIRAFFE360



Duffield Office

Duffield House
Town Street
Duffield
Derbyshire
DE56 4GD

01332 843390
duffield@fletcherandcompany.co.uk

Derby Office

15 Melbourne Court
Millennium Way
Pride Park
Derby
DE24 8LZ

01332 300558
derby@fletcherandcompany.co.uk

Willington Office

3 The Boardwalk
Mercia Marina
Findern Lane
Willington
Derbyshire
DE65 6DW

01283 241500
willington@fletcherandcompany.co.uk

The Cottage St. John's Road
Matlock Bath
Matlock
DE43PQ

Council Tax Band: D
Tenure: Freehold

