



Carnation Way, SW8  
£8,044,000

**Dexters**



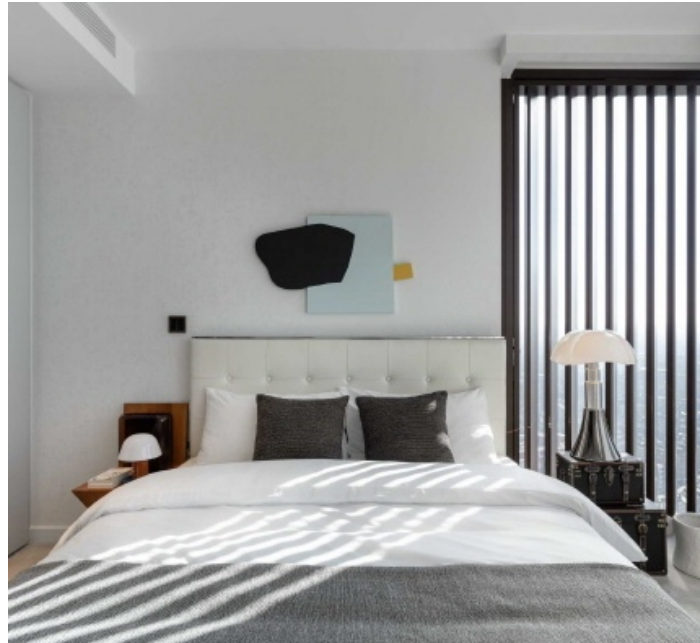
## Carnation Way, SW8

Designed by the same architects as the Burj Khalifa in Dubai this five-bedroom apartment with four bathrooms is located on the forty-second floor. There is a huge open-plan living/dining room with a separate kitchen and study offering a flexible layout for a large family.

Located in Nine Elms, just by the station this building boasts unmatched resident facilities including a large gym with pool and spa area as well as a members cinema, dining room, conference space and creche for children. There is even a karaoke room!

### Features

- Five Double Bedrooms
- Four Bathrooms
- Forty Second Floor
- Separate Kitchen + Study
- Large Open Plan Living/Dining
- Direct River + City Views



# Carnation Way, London, SW8

