



smarthomes

Emsford Close

Dorridge, Solihull

- A Very Well Presented Two Bedroom Detached Bungalow
- Modern Fitted Kitchen & Two Shower Rooms
- Private Rear Garden, Garage & Driveway
- No Upward Chain

£475,000

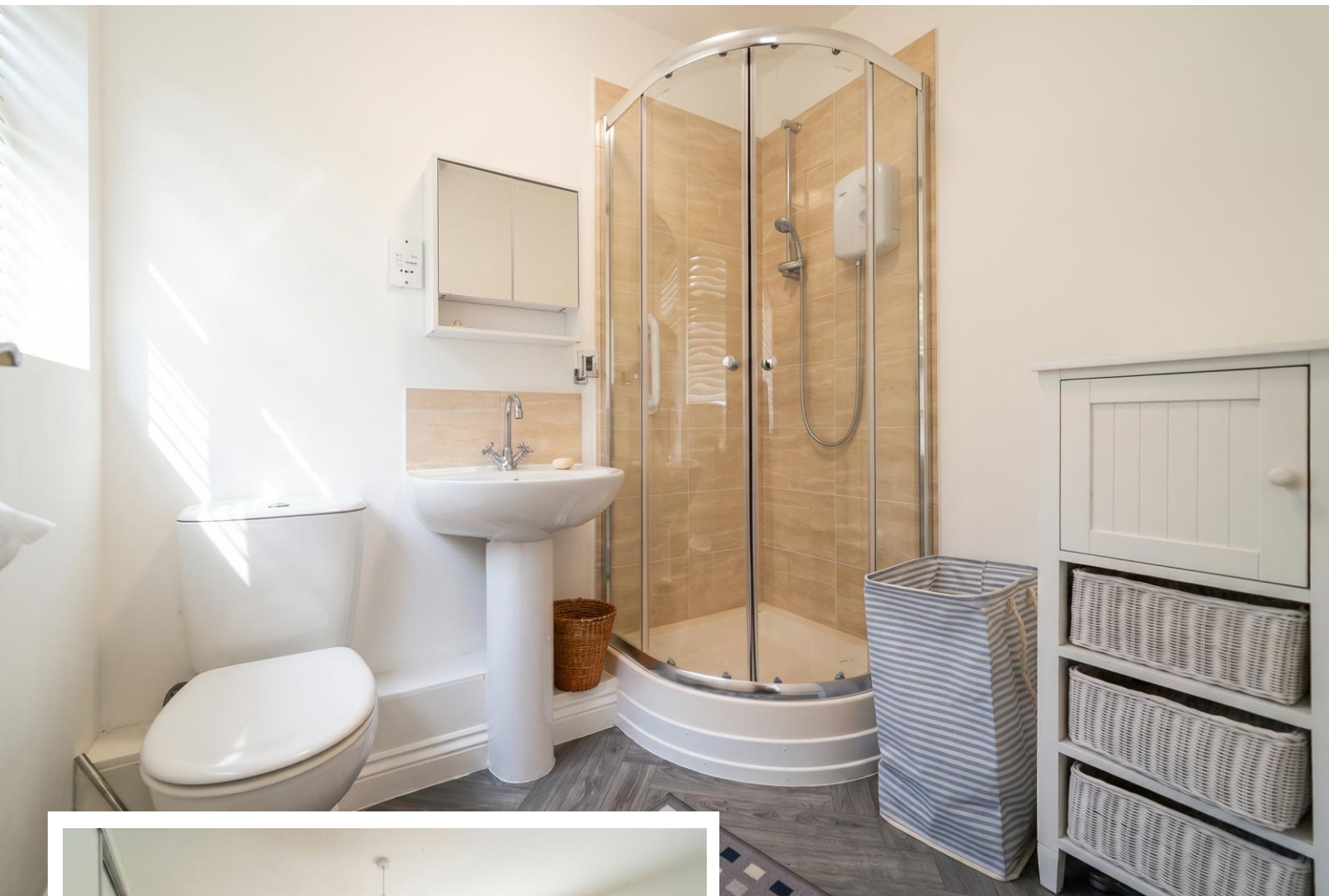
Current EPC Rating - D
Current Council Tax Band - E





Property Description

A very well presented detached bungalow situated in a delightful cul-de-sac location and benefiting from no upward chain. Offering accommodation comprising a spacious lounge/diner, modern fitted kitchen, versatile side lobby/boot room, two double bedrooms, modern en-suite shower room, additional family shower room, private rear garden, detached garage and driveway parking



Rooms & Measurements

Spacious Lounge/Diner to Front 5.7m x 4.5m (18'8" x 14'9")

Modern Fitted Kitchen to Rear 3.8m x 2.2m (12'5" x 7'2")

Bedroom One to Rear 2.9m x 2.8m (9'6" x 9'2")

Modern En-Suite Shower Room

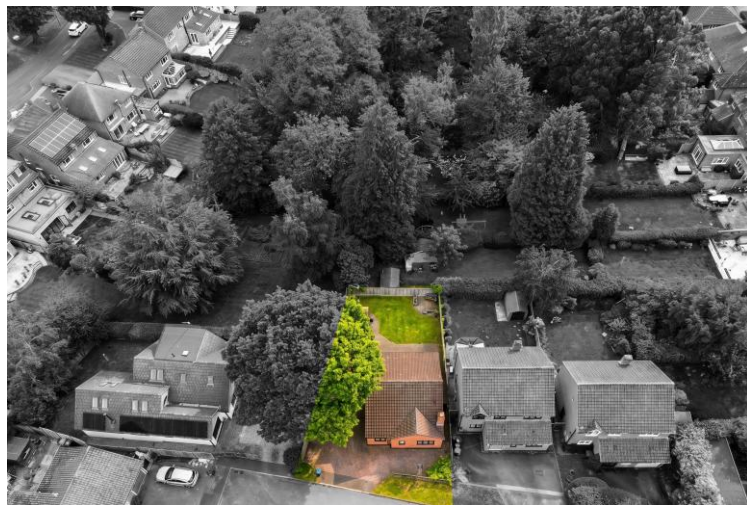
Bedroom Two to Front 3.3m x 2.3m (10'9" x 7'6")

Modern Family Shower Room

Detached Garage 4.9m x 2.3m (16'0" x 7'6")

Tenure

We are advised by the vendor that the property is freehold. We would advise all interested parties to obtain verification through their own solicitor or legal representative. EPC supplied by vendor. Current council tax band – E



316 Stratford Road
Shirley
Solihull
B90 3DN

www.smart-homes.co.uk
0121 744 4144

Agents Note: Whilst every care has been taken to prepare these particulars, they are for guidance purposes only. We believe all information to be correct from the day of marketing however, we advise and recommend that your conveyancer and or surveyor verifies all information supplied. All measurements are approximate and are for general guidance purposes only and whilst every care has been taken to ensure their accuracy, they should not be relied upon and potential buyers are advised to recheck the measurements.