

PROSPECT

— LONDON —

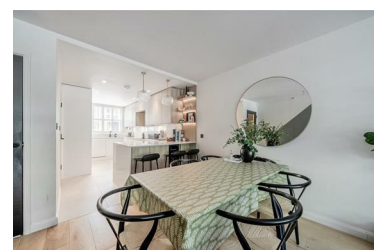


3 Home Meadow Mews, London, SE22 0EA

£4,000 Per month



A modern and contemporary four bedroom house, set back from the road in a secure gated mews development.



- SECURE GATED DEVELOPMENT
- MODERN HOUSE
- PRIVATE REAR GARDEN
- CAR PARKING SPACE FOR 2 CARS
- 4 BEDROOMS (3 WITH EN-SUITE)