



Lissenden Gardens, NW5

£3,500 Per week

A recently refurbished three double bedroom, two bathroom apartment with separate kitchen, private garden and an annex ideal for a home office. Furniture flexible.

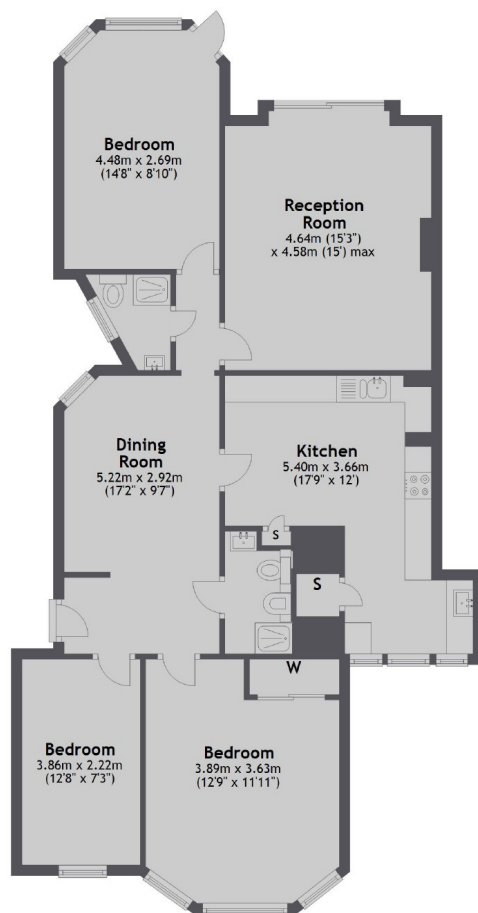
Lissenden Gardens is well situated for Hampstead Heath and Parliament Hill, with access to Gospel Oak, Kentish Town and Highgate.

Features

Characterful Apartment
Recently Refurbished
Three Double Bedrooms
Two Bathrooms
Private Garden
Annexed Home Office

Lissenden Gardens, London, NW5

Ground Floor



Total area: approx. 96.9 sq. metres (1043.5 sq. feet)