



# EQUUS

*Country & Equestrian*



**KINGFISHERS**



## KINGFISHERS, Longmete Road, Preston, Nr Canterbury, Kent, CT3 1DL

**REDUCED** - A four bedroom family detached chalet-style residence set within 2.5 acres (\*TBV) of gardens and equestrian facilities, occupying a sought-after semi-rural position in the village of Preston. Offering excellent riding out, cycling routes and countryside walks directly from the doorstep, this property presents an enviable country lifestyle opportunity.

The Equestrian facilities are well arranged and include four paddocks, two stable blocks comprising five loose boxes, a 40m x 20m riding arena, hay store, substantial outbuildings and garages, all offering further potential subject to the necessary planning consents.

The spacious and versatile accommodation is beautifully light and airy throughout, ideally suited to modern family living. The ground floor comprises an enclosed entrance porch, reception hall, impressive open-plan sitting/dining room, fitted kitchen/breakfast room with integrated appliances, family bathroom and two double bedrooms, one of which is currently utilised as a study. To the first floor are two further generous double bedrooms together with a contemporary shower room.

Externally, the property enjoys delightful open aspects to the front across neighbouring farmland and is approached via an in-and-out gravel driveway providing extensive off-road parking. A separate vehicular side access, suitable for horseboxes, leads directly to the stable yard and additional parking areas. To the rear, a paved sun terrace offers an ideal space for outdoor entertaining, complemented by lawned gardens and mature conifer boundaries providing privacy and seclusion.

Combining rural charm with excellent versatility, this home offers the perfect blend of country living and modern convenience, all within easy reach of Canterbury and surrounding amenities. A rare opportunity to acquire a substantial equestrian property in a village setting.

### SITUATION & LOCATION

The charming and sought-after village of Preston is ideally positioned between the historic town of Sandwich and the well-served village of Wingham.

Within the village itself are the welcoming The Half Moon & Seven Stars public house, a village shop, reputable butchers, and a primary school. Surrounded by beautiful countryside, Preston is perfect for walking, cycling, and riding enthusiasts. A short distance away lies the picturesque town of Sandwich, one of the original Cinque Ports, offering an excellent range of amenities including a supermarket, independent shops, post office, chemist, doctors' and dental surgeries, together with a variety of restaurants and public houses. The town also benefits from a selection of highly regarded schools and

leisure facilities.

Excellent transport links are available via road and rail, with mainline stations at Sandwich and Adisham providing connections to the City of Canterbury and high-speed services to London St Pancras International.

For leisure enthusiasts, both Prince's Golf Club and Royal St George's Golf Club are close by at Sandwich Bay, while the impressive Dover Leisure Centre at Whitfield is approximately a 15-minute drive away.

### LAND & GROUNDS

\*The acreage and land shown or stated on any map, plan or particulars is TBV (To Be Verified). This means the land has not been formally measured or verified by Equus or the sellers. A Title Plan from the Land Registry will be available, where possible, showing the boundary and stated acreage. Interested parties wishing to verify the exact area should make their own enquiries via their solicitor and, if required, commission a suitably qualified professional to undertake a formal measurement.

Agents Note : There is public footpath that runs along the perimeter of the land behind the stables but this fenced outside as a pathway.

### MATERIAL INFORMATION & SERVICES

TENURE: Freehold

PROPERTY TYPE: Detached

PROPERTY CONSTRUCTION: Brick with rendering

NUMBER & TYPE OF ROOM/S: see attached floor plans.

PARKING: Private in and out drive to front for vehicles and rear parking

FLOOD RISK: Zone 1

TITLE NUMBER/S: K553421/K559151

LOCAL AUTHORITY: Dover District Council

TAX BAND: E

EPC RATING: Full ratings & advisories/estimated costs are now online at the .gov web site:

<https://find-energy-certificate.digital.communities.gov.uk/>

MAIN HOUSE - SERVICES

HEATING: Mains Gas

SEWAGE: Mains Drainage

WATER SUPPLY: Mains

ELECTRICITY SUPPLY: Mains

OUTBUILDING/STABLES - SERVICES:

ELECTRICITY SUPPLY: To stables and some outbuildings

PROPERTY TYPE: Detached

PROPERTY CONSTRUCTION: A mix of block-built stables and outbuildings

### HELPFUL WEBSITES

We recommend that you visit the local authority website pertaining to the property you are interested in buying for all the planning consents / restrictions / history and the following websites for more helpful information about the



property and surrounding local area before proceeding in a purchase:  
[www.goodschoolsguide.co.uk](http://www.goodschoolsguide.co.uk) | [www.homecheck.co.uk](http://www.homecheck.co.uk) |  
[www.floodrisk.co.uk](http://www.floodrisk.co.uk) | [www.environment-agency.gov.uk](http://www.environment-agency.gov.uk) -  
[www.landregistry.gov.uk](http://www.landregistry.gov.uk) | [www.homeoffice.gov.uk](http://www.homeoffice.gov.uk) | [www.ukradon.org](http://www.ukradon.org)  
<https://checker.ofcom.org.uk/en-gb/mobile-coverage>  
<https://www.ofcom.org.uk/phones-telecoms-and-internet/advice-for-consumers/advice/broadband-speeds/broadband-basics>

**DISCLAIMERS**

1. These particulars are not an offer or contract, nor part of one. You should not rely on statements given by Equus International Property Ltd in the particulars as being factually accurate about the property, its condition or its value. Neither Equus International Property Ltd nor any joint agent has any authority to make any representations about the property, any information given is entirely without responsibility on the part of Equus International Property Ltd. 2. Please note that the material information is provided to Equus International Property Ltd by third parties and is provided here as a guide only. We advise you to confirm the details of any such information prior to any offer being submitted. We will use reasonable endeavours to update if there are changes as soon as practical. 3. The photographs, property videos and virtual viewings etc. show only certain parts of the property as they appeared at the time they were taken. Areas, measurements and distances given are approximate only. 4. Any reference to alterations to, or use of, any part of the property does not mean that any necessary planning, building regulations or other consent has been obtained. A buyer must find out by inspection or in other ways that these matters have been properly dealt with and that all information is correct. 5. A list of the fitted carpets, curtains, light fittings and other items fixed to the property which are included in the sale (or may be available by separate negotiation) will be provided by the Seller's Solicitors. 6. VAT may be payable and may change without notice.

**VIEWING ARRANGEMENTS**

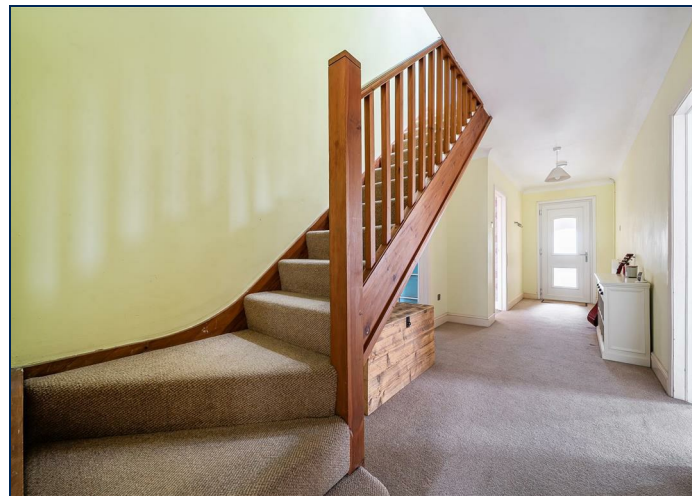
All Viewings are strictly by Appointment with the Vendors' Agent Equus Country & Equestrian, South East/South West  
 T: 01892 829014

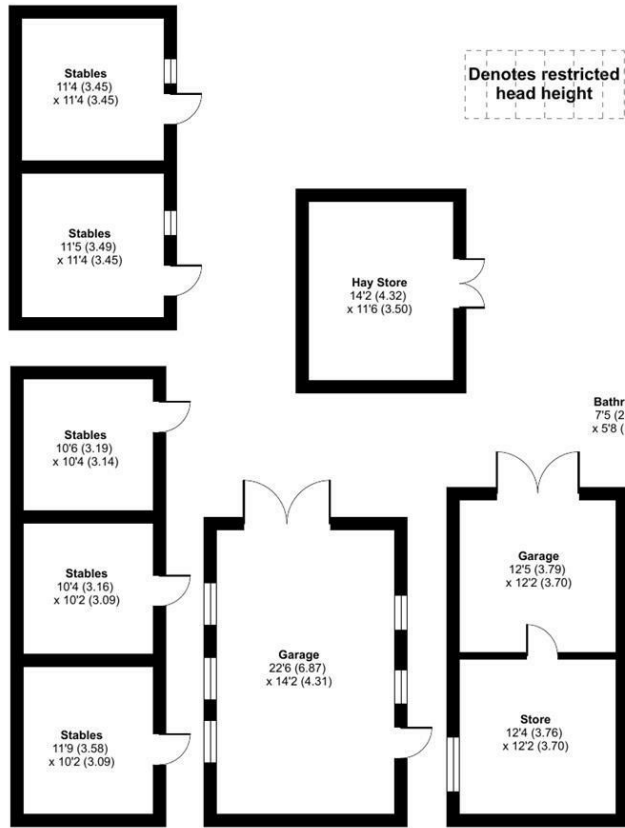
E: [sales@equusproperty.co.uk](mailto:sales@equusproperty.co.uk)  
 W: [www.equusproperty.co.uk](http://www.equusproperty.co.uk)

**DISCLAIMER:** All prospective buyers view all properties for sale with Equus International Property Ltd at their own risk and neither the Agents, Joint Agents nor the Sellers take responsibility for any damage or injury however caused to themselves or personal belongings or property.

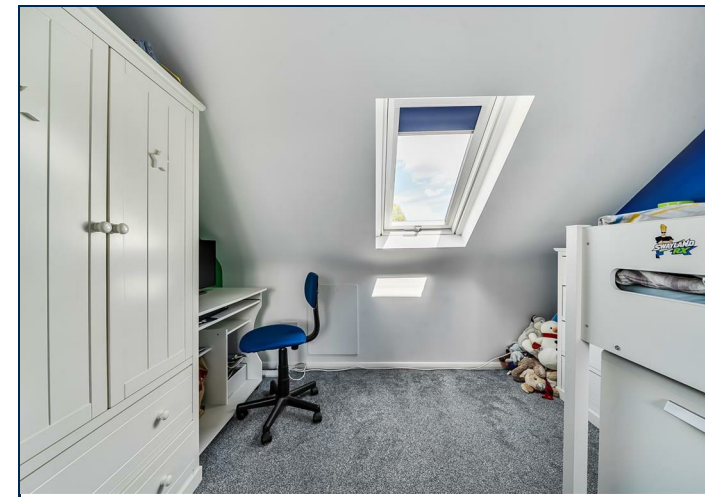
By viewing a property with Equus you accept this disclaimer. If inspecting the outbuildings, equestrian facilities or any other building within the grounds you must wear appropriate clothing and footwear and children must be either left in the car or always supervised. Livestock should not be touched and all gates left shut or closed after use.

**Guide price £750,000**

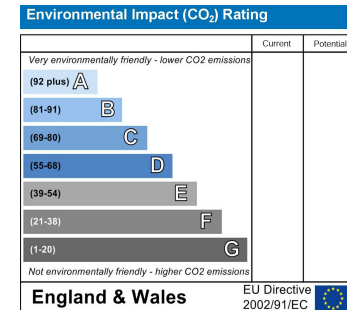
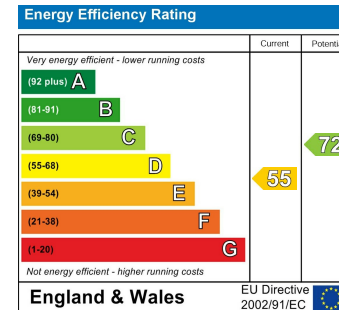




Approximate Area = 1501 sq ft / 139.4 sq m  
 Limited Use Area(s) = 57 sq ft / 5.2 sq m  
 Garages / Store = 741 sq ft / 68.8 sq m  
 Stables = 757 sq ft / 70.3 sq m  
 Total = 3056 sq ft / 283.7 sq m  
 For identification only - Not to scale



Floor plan produced in accordance with RICS Property Measurement 2nd Edition, Incorporating International Property Measurement Standards (IPMS2 Residential). © nichecom 2026. Produced for Equus Property. REF: 1456212



PROPERTYMISDESCRIPTION ACT 1991: Every care has been taken in the preparation of these particulars but their accuracy is not guaranteed and they do not form part of any contract. Descriptions are given in good faith and as an opinion of the agents, not as a statement of fact. No description or information given about the property or its value, whether written or verbal or whether or not in these Particulars ("information") may be relied upon as a statement of representation or fact. Neither Equus Property nor its Joint Agents have any authority to make any representation and accordingly any information given is entirely without responsibility on the part of Equus Property or the seller/lessor. Any areas, measurements or distances referred to are given as a guide only and are not precise. Photographs are reproduced for general information using a 24mm wide-angle lens and are not necessarily comprehensive nor current; no assumption should be made that any content shown are included in the sale nor with regards to parts of the property which have not been photographed. Reference to any particular use of any part of the property or to alterations is not intended to imply that planning or building regulations or any other consents have been obtained. We have not tested any appliances, services, heating systems or fixtures, and so cannot guarantee they are in good working order. Prospective purchasers should undertake their own tests, enquiries or surveys before entering into any commitment. The information in these particulars is given without responsibility on the part of the Agent or their clients. Neither the Agents nor their employees have any authority to make or give any representations or warranties whatever in relation to this property. These particulars are issued on the understanding that all viewings and negotiations are conducted through the agents.

NATIONAL ADVERTISING • LOCAL KNOWLEDGE • SPECIALIST ADVICE



[www.equusproperty.co.uk](http://www.equusproperty.co.uk)

NATIONAL ADVERTISING • LOCAL KNOWLEDGE • SPECIALIST ADVICE



A member of



PrimeLocation.com

UKLAND and  
FARMS.co.uk

