



TELFERSCOT ROAD, SW12

£2,450 PCM

- Ground flat floor
- Two bedrooms
- Reception room
- Open plan kitchen
- Close to Station
- Energy rating: C



2



1



1





## ABOUT THE HOME

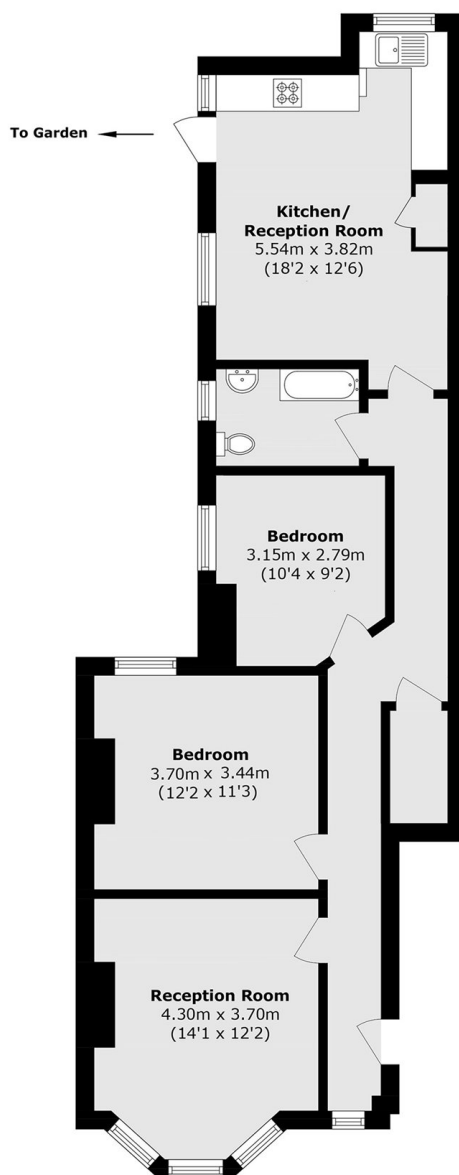
A two bedroom ground floor flat with an open plan kitchen and spacious reception room. This property would be suitable for professional sharers.

Situated on Telferscot Road in the ever popular Hyde Farm Estate this property is ideally located between Balham and Streatham Hill Stations. Tooting Bec Common is just a short walk away as well as the local shops, bars and restaurants on offer.









Total area (approx.): 77.0 sq. m (828.8 sq. ft)

#### JACKSONS BALHAM

8-11 Balham Station Road,  
London, SW12 9SG  
Sales: 020 8675 6555  
Lettings: 020 8675 6565

Energy Rating: We aim to make our particulars both accurate and reliable. However they are not guaranteed; nor do they form part of an offer or contract. If you require clarification on any points then please contact us, especially if you're traveling some distance to view. Please note that appliances and heating systems have not been tested and therefore no warranties can be given as to their good working order.