



Excelsior Street, offers in the region of £140,000

- No onward chain
- Bright and comfortable lounge
- Stunning mountain views to the front elevation
- Spacious accommodation arranged over three levels
- Ideal first-time buy or family home
- Close to local amenities and transport links





About the property

Offered to the market with no onward chain, this attractive two-bedroom terraced home has been modernised by the current owners and provides spacious and versatile accommodation over three levels. Enjoying beautiful mountain views to the front elevation, the property represents an excellent opportunity for first-time buyers, investors and those looking to downsize.

The ground floor accommodation comprises an entrance hall leading to a bright and welcoming lounge, offering a comfortable space for everyday living and entertaining.

To the rear, the modern fitted kitchen features a range of wall and base units, ample worktop space and a practical layout designed to meet the demands of modern family life. To the first floor are two well-proportioned bedrooms together with a family bathroom. A staircase leads to the converted loft room, providing valuable additional space suitable for a variety of uses.

Externally, the property benefits from an enclosed rear garden, creating an ideal space for outdoor dining, relaxation or low-maintenance enjoyment throughout the year. To the front, attractive mountain views provide a picturesque backdrop and further enhance the appeal of this charming home.

Conveniently situated within easy reach of local shops, schools and public transport links, the property combines practicality with comfortable modern living in a sought-after residential location.

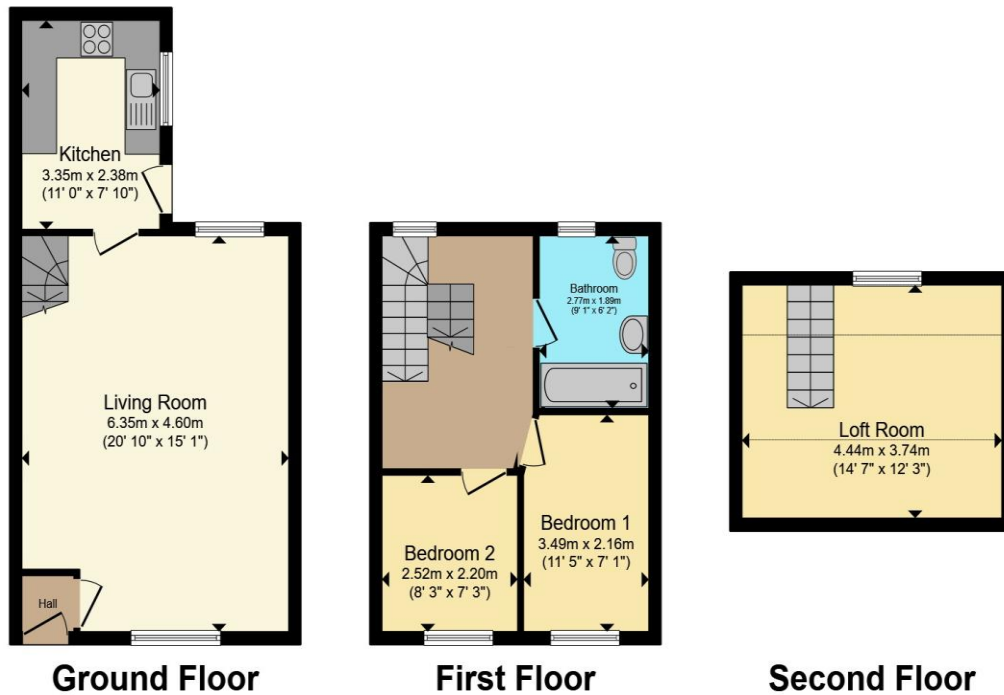


Accommodation

01495360922

ebbwwale@peteralan.co.uk

Floorplan



Total floor area 83.4 m² (897 sq.ft.) approx

This floor plan is for illustrative purposes only. It is not drawn to scale. Any measurements, floor areas (including any total floor area), openings and orientation are approximate. No details are guaranteed, they cannot be relied upon for any purpose and they do not form part of any agreement. No liability is taken for any error, omission or misstatement. A party must rely upon its own inspection(s). Powered by www.propertybox.io



Important Information

Note while we endeavour to make our sales details accurate and reliable, if there is any point which is of particular interest to you, please contact the office and we will be pleased to confirm the position for you. We have not personally tested any apparatus, equipment, fixtures, fittings or services and cannot verify they are in working order or fit for their purposes. Nothing in these particulars is intended to indicate that carpets or curtains, furnishings or fittings, electrical goods (whether wired or not). Gas fires or light fittings or any other fixtures not expressly included form part of the property offered for sale. This computer generated Floorplan, if applicable, is intended as a general guide to the layout and design of the property. It is not to scale and should not be relied upon for dimensions. Tenure: We cannot confirm the tenure of the property as we have not had access to the legal documents. The buyer is advised to obtain verification from their solicitor or surveyor.

Peter Alan Limited is registered in England and Wales under company number 2073153, Registered Office is Cumbria House, 16-20 Hockliffe Street, Leighton Buzzard, Bedfordshire, LU7 1GN. VAT Registration Number is 500 2481 05. For activities relating to regulated mortgages and non-investment insurance contracts, Peter Alan Limited is an appointed representative of Connells Limited which is authorised and regulated by the Financial Conduct Authority. Connells Limited's Financial Services Register number is 302221. Most buy-to-let

