



Guide Price

£600,000

Freehold

3x  1x  2x 

**Church Street,
Rudgwick, West Sussex,
RH12**

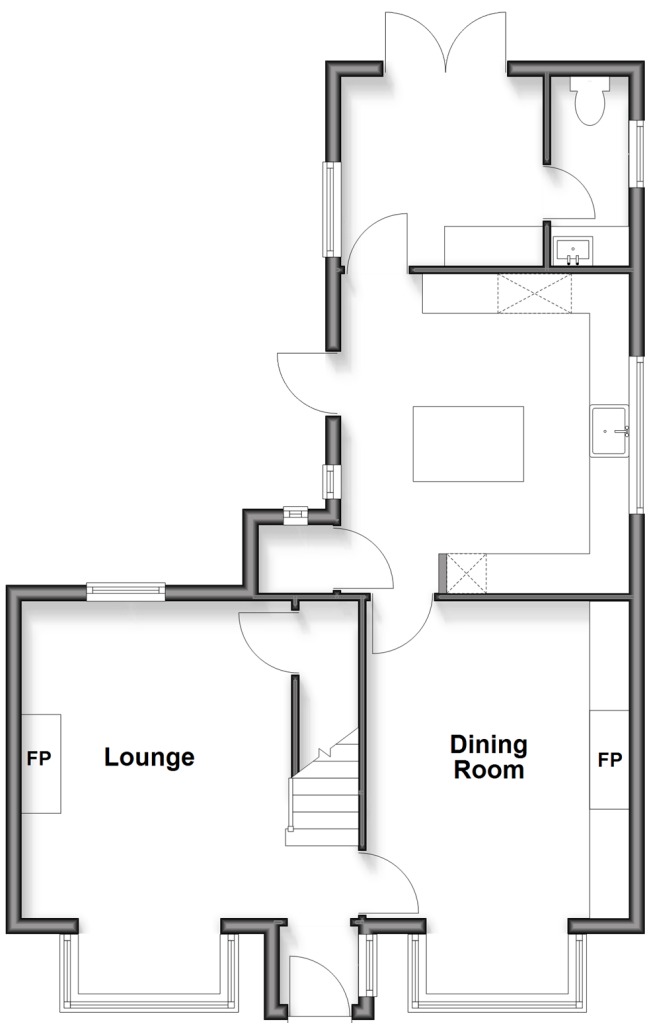
OVER 60?

Secure this property
for up to **59% less!**

cubitt & west
Helping you move forwards

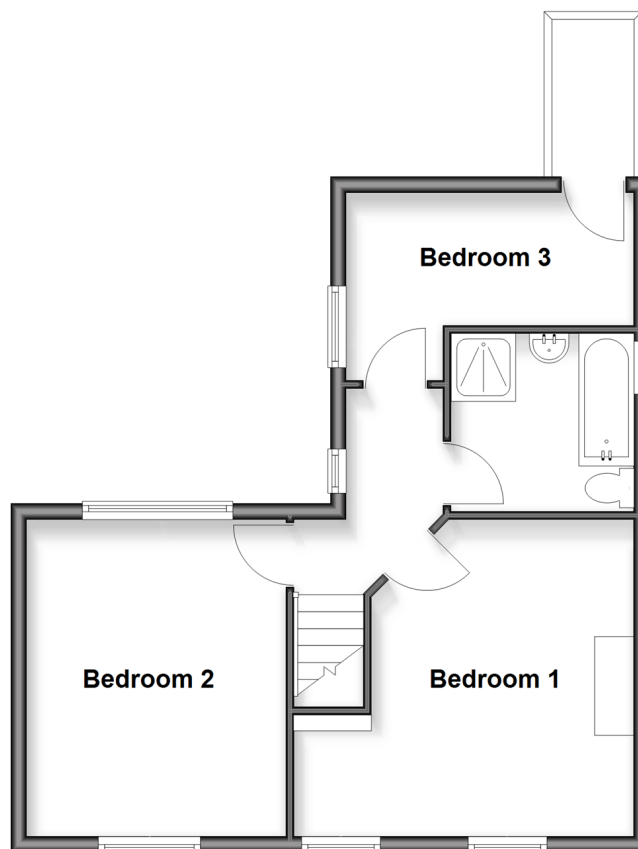
Ground Floor

Approx. 58.8 sq. metres (632.4 sq. feet)



First Floor

Approx. 46.1 sq. metres (495.7 sq. feet)



Accommodation

GROUND FLOOR

Entrance Hallway

Lounge: 16'4 x 14'11 (4.98m x 4.55m)

Dining Room: 16'4 x 10'11 (4.98m x 3.33m)

Kitchen: 13'3 x 12'11 (4.04m x 3.94m)

Boot Room: 8'5 x 7'11 (2.57m x 2.41m)

Cloakroom

FIRST FLOOR

Landing

Bedroom 1: 14'2 x 13'2 (4.32m x 4.02m)

Bedroom 2: 13'2 x 10'10 (4.02m x 3.30m)

Bedroom 3: 11'11 x 7'10 (3.63m x 2.39m)

Bathroom

OUTSIDE

Off Road Parking

Rear Garden



Main features

- Stunning Grade II listed property
- Offered with no onward chain
- Set in the heart of the village being close to all the amenities including shop, doctors, dentist and schools
- Within easy reach of countryside walks, local pub, Fire Bird Brewery and Milk Churn Cafe



Nearest Schools

Primary Schools: Rudgwick 0.4 miles, Slinfold CofE Primary 2.2 miles, Loxwood 3.3 miles

Secondary Schools: Farlington (private) 2.8 miles, Glebelands 5.6 miles, The Weald 6.3 miles.



Transport Information

Train Stations: Ockley 6.0 miles, Gomshall 8.2 miles, Witley 9.0 miles



Address

Church Street, Rudgwick, West Sussex, RH12



Directions

For directions to this property please contact us.



cubitt&west
Helping you move forwards

Call Cranleigh Branch 01483 271567 ■ cubittandwest.co.uk



- Legal advice should be taken to verify fixtures/fittings, planning, alterations and/or lease details
- Appliances & services are untested, dimensions are approximate and floor plans are not to scale
- Through a Homewise Home For Life Plan people aged 60+ can secure this property for up to 59% less, by purchasing a Lifetime Lease

EPC RATING

CURRENT:	POTENTIAL:
E(43)	E(53)

20306198/20260214/CH/KAB