

FREEHOLD



House - Terraced

BOULTON ROAD, DAGENHAM, RM8 3DD

Asking Price

£350,000

FEATURES

- ***CHAIN FREE***
- Two Bedrooms
- Lounge
- Fitted Kitchen
- First Floor Bathroom
- Gas Central Heating
- Double Glazing
- Rear Garden



STEPS

Estate Agents

2 Bedroom House - Terraced located in

Steps are delighted to offer for sale this CHAIN FREE two bedroom family home, located within easy access of local schools and transport facilities. To the ground floor the property consists of your lounge and kitchen with the two bedrooms and bathroom on the first floor. With further benefits to include gas fired central heating and double glazing.

Entrance

Via Door to hallway

Hallway

Laminate effect wood flooring. Radiator. Understairs storage cupboard. Staircase to first floor. uPVC window to rear. Doors to

Lounge

12'10" x 12'7"

uPVC window to front. Laminate effect wood flooring. Radiator.

Kitchen

9'10" x 8'4"

Range of fitted wall and base units with roll top work surfaces. Stainless steel single drainer sink unit with mixer taps. Tiled splash backs. Spaces for washing machine, fridge freezer and cooker. Wall mounted combi boiler. uPVC window to rear. Door to garden.

Landing

Access to loft. Doors to

Bedroom One

16'1" x 9'11"

uPVC window to front. Radiator.

Bedroom Two

11'5" x 7'10"

uPVC window to rear. Radiator. laminate effect wood flooring.

Bathroom

5'6" x 4'4"

Panel enclosed bath. Wash hand basin. Low level WC. Radiator. Tiled splash backs. Obscure glazed uPVC window to rear.

Rear Garden

33'8" x 17'2" approx

We routinely refer potential purchasers to Move with Us Ltd. It is your decision whether you choose to deal with Move with Us Ltd. In making that decision, you should know that we receive an annual payment benefits from Move with Us Ltd, equating to approximately £314.48 per referral.

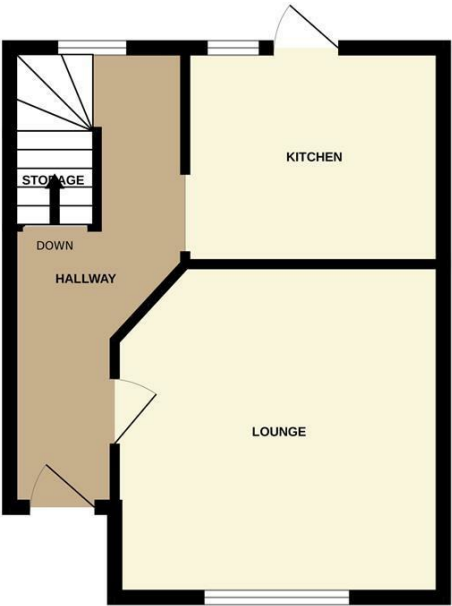


DAGENHAM SALES | STEPS ESTATE AGENTS, 298 HEATHWAY, DAGENHAM, ESSEX, RM10 8LU

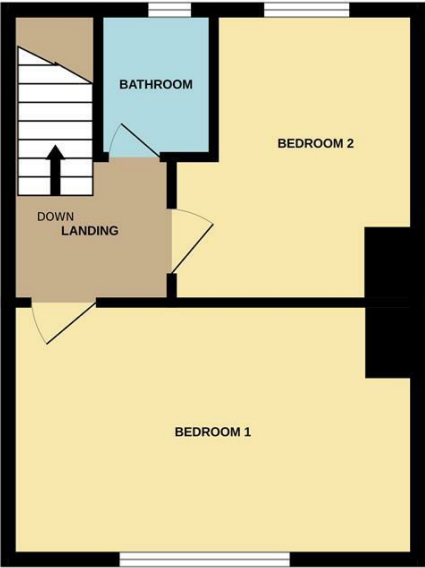
Call us on
020 8593 5933
 dagenham@steps.me.uk
 www.steps.me.uk

Council Tax Band
C

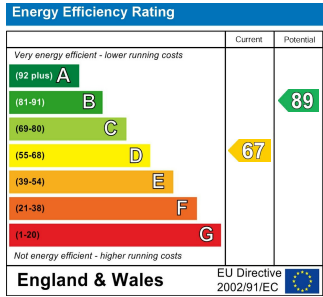
GROUND FLOOR
 341 sq.ft. (31.7 sq.m.) approx.



1ST FLOOR
 326 sq.ft. (30.3 sq.m.) approx.



TOTAL FLOOR AREA : 667 sq.ft. (62.0 sq.m.) approx.
 Whilst every attempt has been made to ensure the accuracy of the floorplan contained here, measurements of doors, windows, rooms and any other items are approximate and no responsibility is taken for any error, omission or mis-statement. This plan is for illustrative purposes only and should be used as such by any prospective purchaser. The services, systems and appliances shown have not been tested and no guarantee as to their operability or efficiency can be given.
 Made with Metropix ©2025



Agents Note: Whilst every care has been taken to prepare these particulars, they are for guidance purposes only. All measurements are approximate and are for general guidance purposes only and whilst every care has been taken to ensure their accuracy, they should not be relied upon and potential buyers are advised to recheck the measurements.

