



Connells

St. Lawrence Crescent
Coxheath Maidstone



Property Description

Discover an exceptional opportunity to acquire one of Coxheath's more generously proportioned semi-detached homes.

Positioned within a modern, well-kept residential enclave, this home combines contemporary efficiency, village charm, and an elevated standard of living. The home is opposite a small, quiet, privately maintained park and green, which are great for the community.

Entering through the hallway, you are welcomed into a bright and flowing ground floor layout.

A spacious lounge, ideal for relaxation and entertaining

A modern kitchen/dining room, Cloakroom/WC, adding practicality to the ground floor. The upper levels provides a thoughtfully arranged sleeping area with:

Primary bedroom with ensuite shower room, offering privacy and convenience and three additional bedrooms, perfect for children, home working, or guest use with a family bathroom with modern fittings.

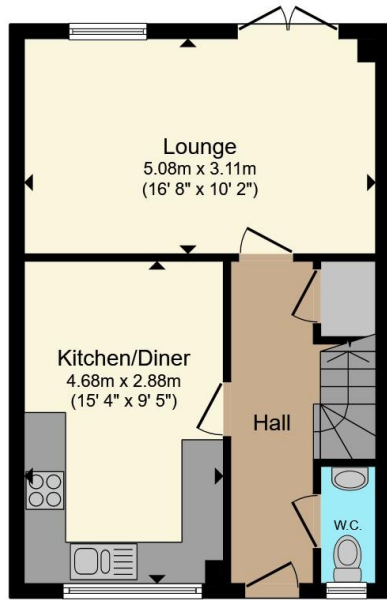
The area comprises of Local shops, cafés, bakery, GP surgery, pharmacy, and amenities Well-regarded Coxheath Primary School and Cornwallis Acadamey. Easy access to countryside walking routes and orchards with strong transport links into Maidstone town centre.



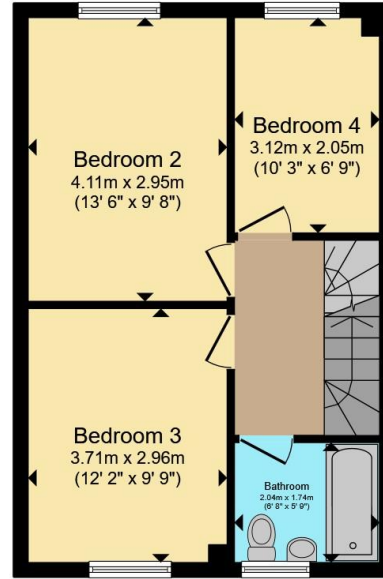




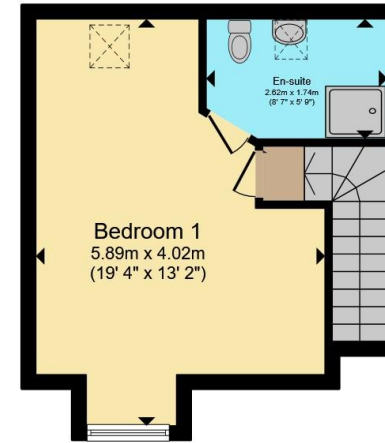




Ground Floor



First Floor



Second Floor

Total floor area 106.8 m² (1,150 sq.ft.) approx

This floor plan is for illustrative purposes only. It is not drawn to scale. Any measurements, floor areas (including any total floor area), openings and orientation are approximate. No details are guaranteed, they cannot be relied upon for any purpose and they do not form part of any agreement. No liability is taken for any error, omission or misstatement. A party must rely upon its own inspection(s). Powered by www.propertybox.io

Connells

To view this property please contact Connells on

T 01622 751034

E maidstone@connells.co.uk

30 King Street
MAIDSTONE ME14 1BS

EPC Rating: B Council Tax
Band: E

Tenure: Freehold

view this property online connells.co.uk/Property/MAI408493



1. MONEY LAUNDERING REGULATIONS Intending purchasers will be asked to produce identification documentation at a later stage and we would ask for your co-operation in order that there will be no delay in agreeing the sale. 2. These particulars do not constitute part or all of an offer or contract. 3. The measurements indicated are supplied for guidance only and as such must be considered incorrect. Potential buyers are advised to recheck measurements before committing to any expense. 4. We have not tested any apparatus, equipment, fixtures, fittings or services and it is in the buyers interest to check the working condition of any appliances.

Connells Residential is registered in England and Wales under company number 1489613, Registered Office is Cumbria House, 16-20 Hockliffe Street, Leighton Buzzard, Bedfordshire, LU7 1GN. VAT Registration Number is 500 2481 05.

See all our properties at www.connells.co.uk | www.rightmove.co.uk | www.zoopla.co.uk

Property Ref: MAI408493 - 0011