

Hutton Grove, Hartburn



Reduced To £239,995





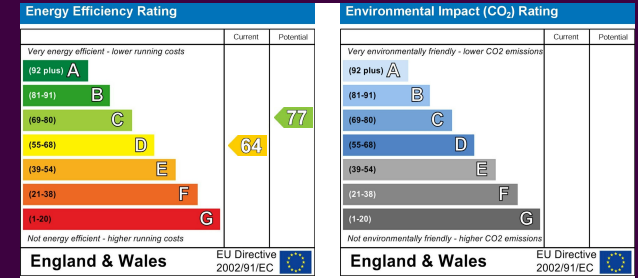
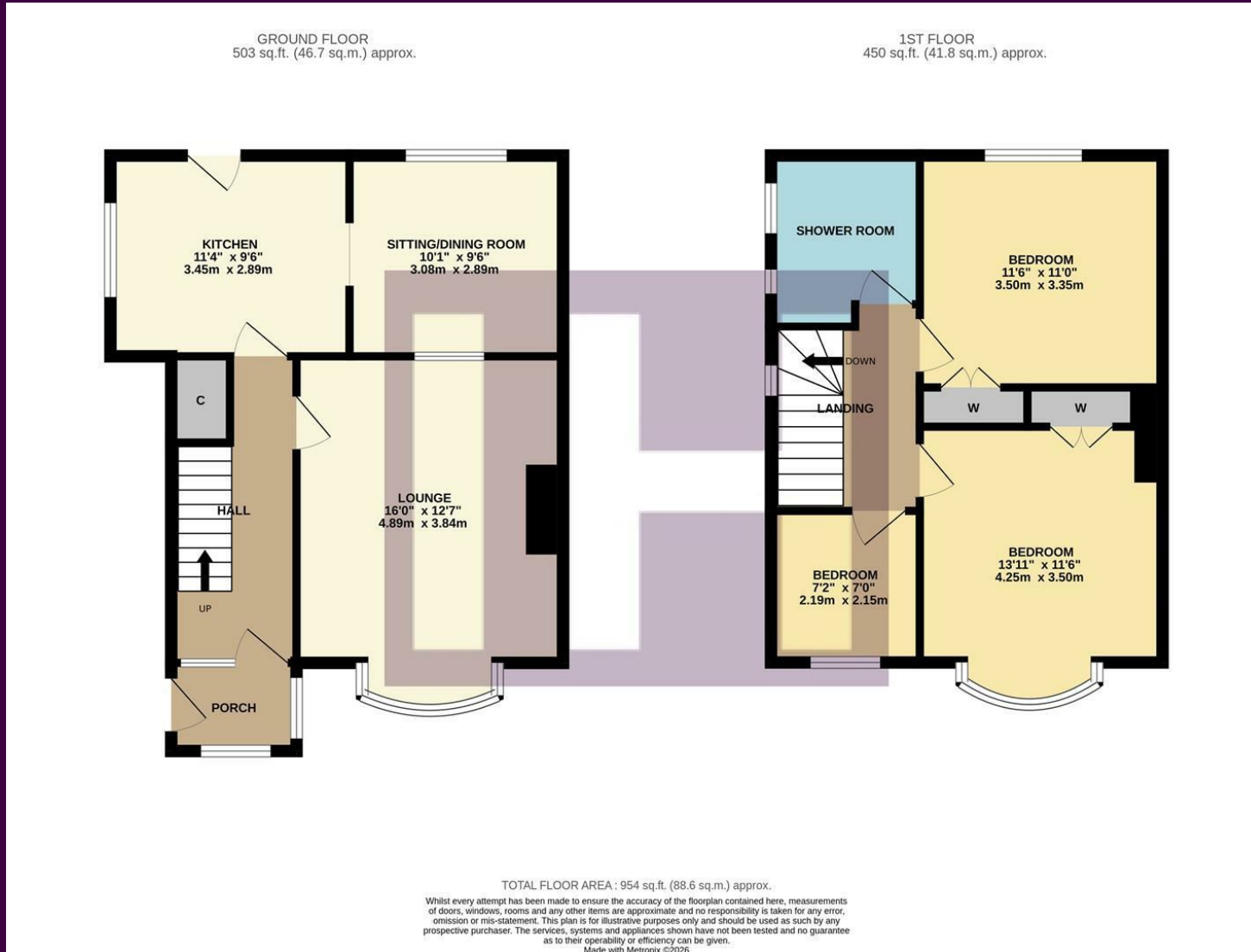
This impressive, traditional 'bay-fronted' property boasts an enviable corner plot, bringing beautiful, established gardens to the front and side, enclosed in dwarf brock-built wall, with gated side access to a generous block-paved drive which approaches the garage, complimented buy the enclosed 'courtyard' style rear garden and patio - a real sun-trap.

Situated within this sought-after 'Hartburn' location, ideally positioned for highly regarded schooling, this is a family home that may appeal to a wide variety of buyers.



Internally, the accommodation briefly comprises an entrance porch, inner hall, large bay-fronted lounge with feature fireplace, fitted kitchen, and further rear sitting/dining room on the ground floor. The first floor delivers three bedrooms, the front bay-fronted and with recessed fitted robes, the second with recessed fitted robes and a further complement of fitted furniture, whilst the separate family shower room has been professionally refitted to a stylish finish.

The Layout



The Location



Council Tax Band:
Tenure:

C
Freehold



- Large corner plot within favoured 'Hartburn' location
- Extensive front and side, wrap-around gardens
- Gated block-paved drive, garage, and attractive 'courtyard' rear garden
- Especially well-cared for accommodation
- Impressive refitted first floor shower room
- Viewing advised



www.ingleby-homes.co.uk
01642 671025

IH INGLEBY HOMES