



Marlborough Road, Chelmsford

In Excess of £400,000



Marlborough Road

Old Moulsham, Chelmsford

This charming two double bedroom mid-terraced period home is stylishly presented throughout, authentically blending modern finishes with an abundance of original character. Ideally positioned in the heart of Old Moulsham, the property offers a happy balance of period features and contemporary living.

Council Tax band: C

Tenure: Freehold

EPC Energy Efficiency Rating: D

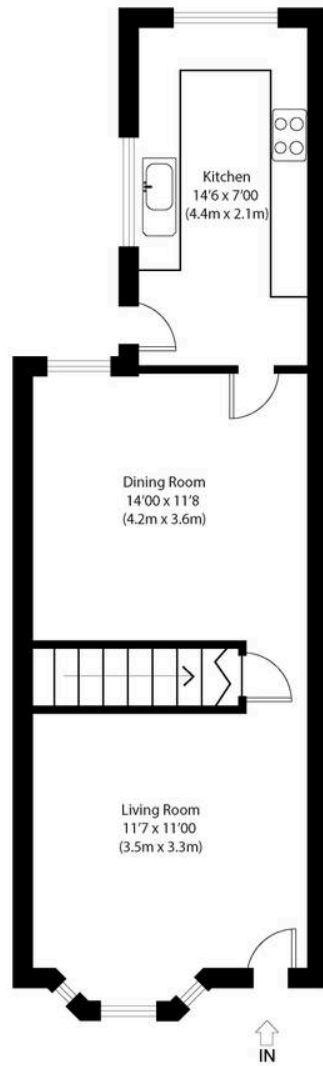
EPC Environmental Impact Rating: D

- Two reception rooms (used as sitting room and dining room)
- Beautiful first floor bathroom
- Mid-terraced period house
- Close proximity to Chelmsford City Centre
- Spacious separate fitted kitchen
- Lovely private rear garden with sunny aspect
- In the heart of Old Moulsham
- A stones throw away from some fabulous independent eateries, pubs, and coffee shops
- Excellent transport links
- Sought-after location

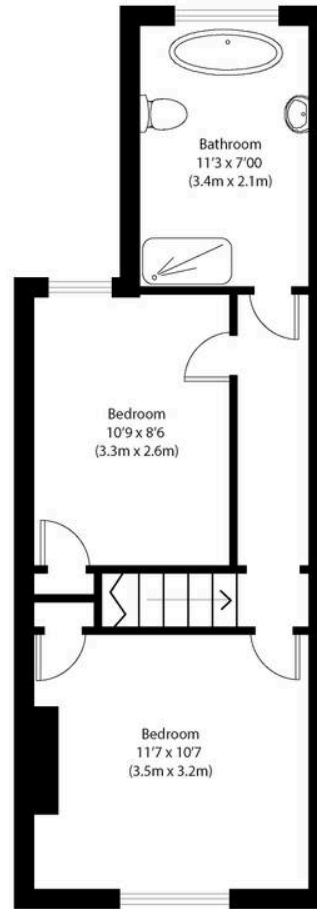








Ground Floor



First Floor


Approximate Gross Internal Area
785 sq ft (73 sq m)

Disclaimer: Floorplan measurements are approximate and are for illustrative purposes only. While we do not doubt the floor plan accuracy and completeness, you or your advisors should conduct a careful, independent investigation of the property in respect of monetary valuation. copyright www.photohausgroup.co.uk





Nested Chelmsford

Fora, 9 Dallington Street, London - EC1V 0LN

01245 970045 • jack.gundry@nested.com • nested.com/chelmsford