

**Shaw  
& Co**  
ESTATE  
AGENTS

**£350,000**

**Eldridge Close**

Feltham, TW14 9NF

**Shaw  
& Co**

## PROPERTY SUMMARY

Shaw & Co are pleased to present this spacious split-level maisonette located on Eldridge Close, walking distance to Feltham train station.

The ground floor offers a generous layout, featuring a large kitchen and a bright, spacious living room that opens directly onto a substantial private garden—ideal for relaxing, entertaining, or family use. This level also includes a third bedroom, a convenient W/C, and ample storage throughout.

Upstairs, the property continues to impress with two large bedrooms, additional storage space, and a modern shower room.

A key benefit of this property is that the service charge includes both hot water and heating, offering added value and convenience for residents.

Situated in a friendly neighbourhood, Eldridge Close provides easy access to local amenities, schools, and parks, with excellent transport links making commuting to nearby towns and cities straightforward.

This well-proportioned maisonette presents a fantastic opportunity for families or professionals looking to enjoy comfortable living in a well-connected community.

3



1



1



Shaw  
& Co



Shaw  
& Co

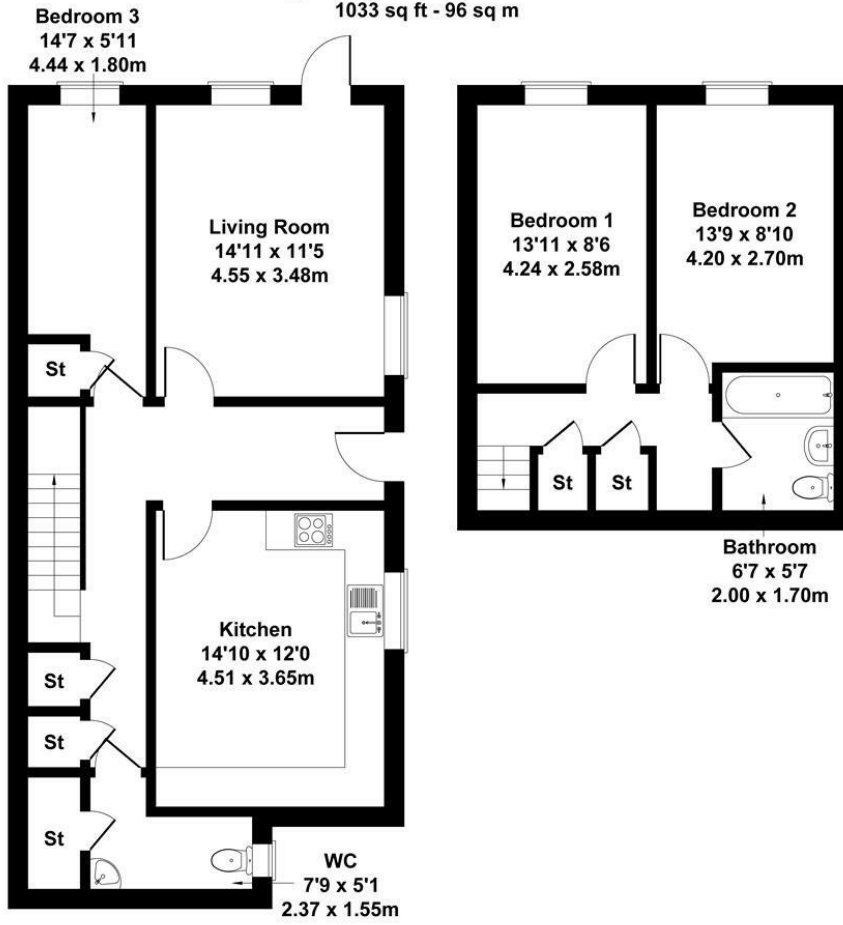


Shaw  
& Co



# Eldridge Close

Approximate Gross Internal Area  
1033 sq ft - 96 sq m



Not to Scale. Produced by The Plan Portal 2026  
For Illustrative Purposes Only.



## LOCAL AUTHORITY

Hounslow

## TENURE

Leasehold

## COUNCIL TAX BAND

C

## VIEWINGS

By prior appointment only

Energy Efficiency Rating		Current	Potential
Very energy efficient - lower running costs			
(92 plus) A			
(81-91) B			
(69-80) C			
(55-68) D		67	69
(39-54) E			
(21-38) F			
(1-20) G			
Not energy efficient - higher running costs			
England & Wales		EU Directive 2002/91/EC	



Agents Note: Whilst every care has been taken to prepare these particulars, they are for guidance purposes only. All measurements are approximate and are for general guidance purposes only and whilst every care has been taken to ensure their accuracy, they should not be relied upon and potential buyers/tenants are advised to recheck the measurements

**Shaw & Co**  
ESTATE AGENTS

**OFFICE ADDRESS**  
401 Legacy Centre  
Hampton Road West  
Feltham  
TW13 6DH

**OFFICE DETAILS**  
02088 938802  
feltham@shawandcoestates.com  
<http://www.shawandcoestates.com>