



3 Bedroom Mid Terraced Family House Charter Road, Kingston Upon Thames. £525,000 Freehold

Stack & Bonner are pleased to offer to the market, this 3 bedroom terrace family home in Charter Road, Kingston upon Thames.

Offering 770 sq ft of internal living space, the property boasts a welcoming entrance hallway, reception room, Fitted kitchen with direct access to a private garden. Large understairs storage cupboard and a ground floor family bathroom suite.

On the first floor, the property boasts 3 good sized bedrooms.

Double glazed windows throughout and gas central heating.

Charter Road is a residential road in south Kingston within a few minutes walk of Norbiton Station [zone 5]

Offered with no onward chain.

WWW.STACKANDBONNER.COM

020 8974 8844

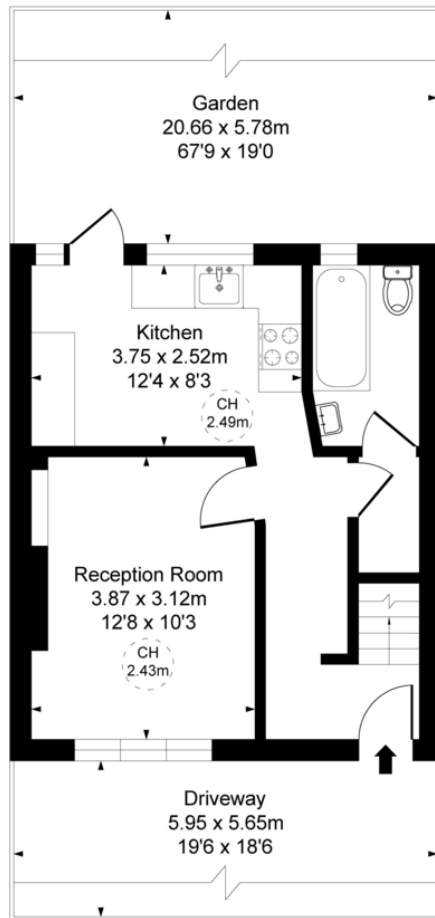
sales@stackandbonner.com



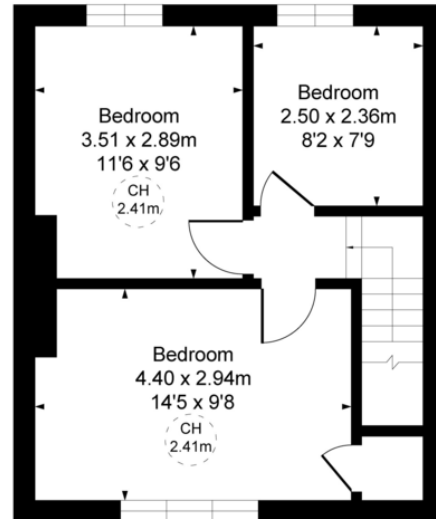
Charter Road Kingston KT1

Approximate Gross Internal Area
71.50 sq m / 770 sq ft

(CH = Ceiling Heights)



Ground Floor



First Floor

This plan is not to scale. It is for guidance and not for valuation purposes.
All measurements and areas are approximate only, and have been prepared in accordance with the current edition of the RICS Code of Measuring Practice.

- Three Bedrooms
- Potential to Extend S.T.P.P
- Modern Fitted Kitchen
- Ground Floor Fitted Bathroom Suite
- Private 70' Lawned Rear Garden
- Double Glazed Windows
- Gas Central Heating Via Combination Boiler
- 770'Sq Ft Living Space
- Sold With No Onward Chain