



1 Brewery Wharf,
LS10

ZENKO
CITY LIVING

FOR SALE

£239,950

A 7TH FLOOR TWO BEDROOM AND TWO BATHROOM
APARTMENT WITH FANTASTIC CITY VIEWS AND SECURE
UNDERGROUND CAR PARKING

















2

Bedrooms

2

Bathrooms

730

Sq. Ft.



ABOUT

A bright and spacious apartment positioned on the 7th floor of 1 Brewery Wharf. Occupying the 'shard' section of the building the living area has large windows to 2 sides, recessed kitchen and balcony with far-reaching skyline views.

PEPPERCORN GROUND RENT

ONSITE CONCIERGE

980 + YEARS REMAINING ON THE LEASE

CYCLE STORAGE

UNDERGROUND CAR PARKING SPACE

COUNCIL TAX BAND: D

7TH FLOOR

EPC: C

BALCONY WITH CITY FANTASTIC VIEWS

LEASEHOLD

1 Brewery Wharf contains 152 apartments with office space to the ground floor and was completed by Rushbond in 2009. Forming part of the wider Brewery Wharf area, this waterside development has a range of cafes, bars and restaurants right on the doorstep as well as a Sainsbury's Local and Brewery Place - home to Channel 4 News.



ABOUT.. continued

Service charge Approx: £3234 P.A

Ground rent: Peppercorn

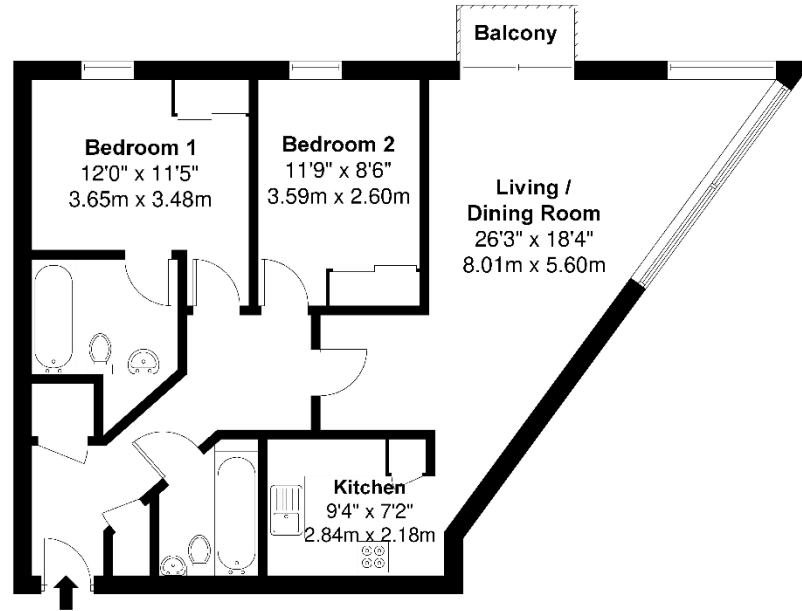
Lease length: 999 years from Jan 2006







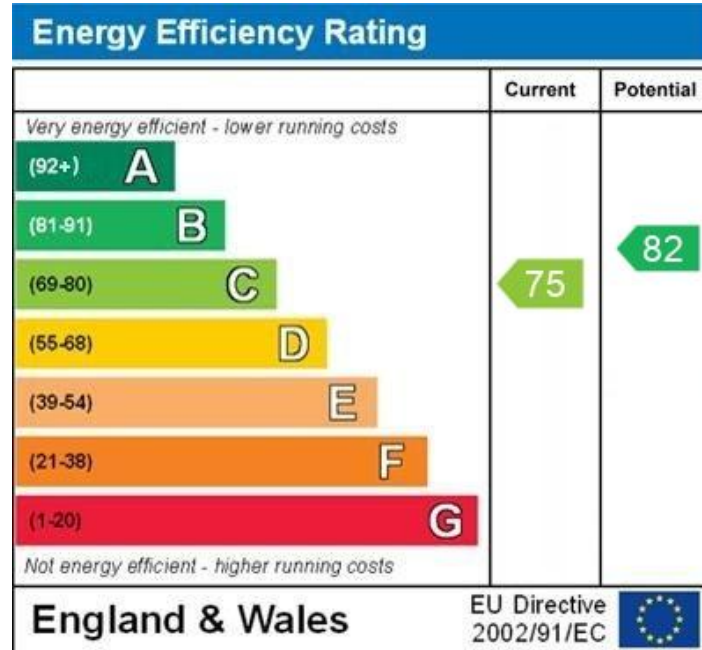




Approx. Gross Internal Floor Area = 68 sq.m / 730 sq. ft
Illustration for identification purposes only, measurements are approximate, not to scale.



EPC



WWW.EPC4U.COM

Lease information

999 from
2006

Lease length

£3234
P.A

Service charge

£0
P.A

Ground rent



For more information or to arrange a viewing contact
Ian Darley, Zenko Properties



Zenko Properties, Graphical
House, 2 Wharf Street, Leeds,
LS2 7EQ



0113 247 0777



ian@zenkoproperties.co.uk



www.zenkoproperties.co.uk



ZENKO
CITY LIVING