



Aristotle Road, SW4

£600,000

Dexters



Aristotle Road, SW4

An exceptional first floor apartment presented in great condition throughout, offering well balanced living and entertaining space. The property features a bright and spacious reception room with a bay window and original fireplace, a separate, recently refurbished and well equipped kitchen/dining room, two generously sized double bedrooms, and a modern bathroom.

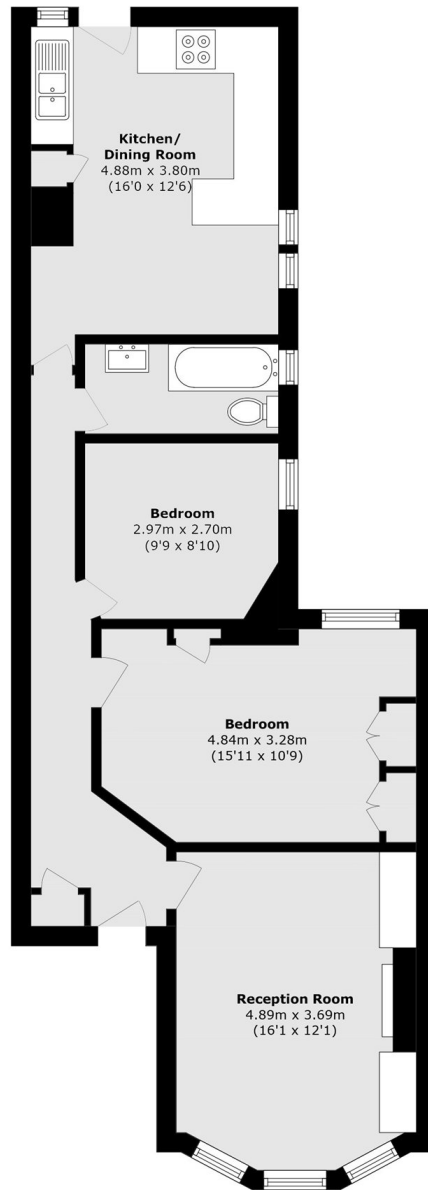
Aristotle Road is ideally located for the excellent selection of shops, bars, cafés, and restaurants found on Clapham High Street and within Clapham Old Town. Clapham Common and Clapham North Underground stations (Northern Line) are both nearby, offering convenient access into Central London.

Features

First Floor
Two Double Bedrooms
Superb Location



Aristotle Road, London, SW4



Total area (approx.): 75.2 sq. m (809.4 sq. ft)