

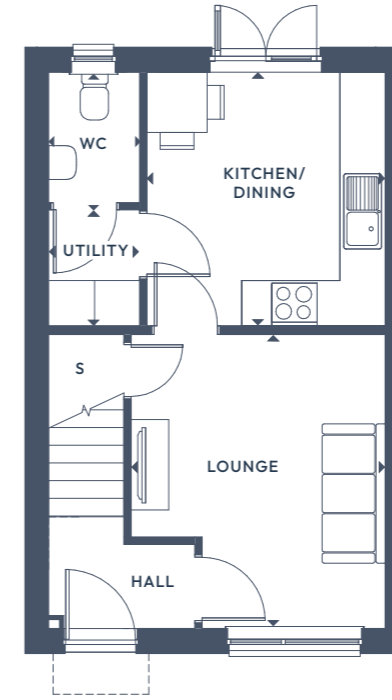


The Laurel.

2 BEDROOM TERRACE

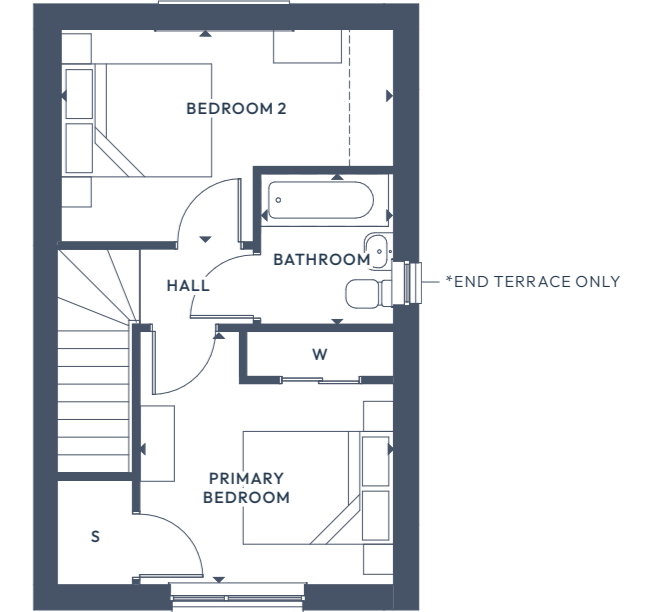
GROUND FLOOR:

FIRST FLOOR:



GROUND FLOOR

Lounge/Dining	3.37m x 3.90m	11'1" x 12'10"
Kitchen	3.17m x 3.37m	10'5" x 11'1"
WC	1.20m x 1.73m	4'0" x 5'8"



FIRST FLOOR

Primary Bedroom	3.38m x 3.37m	11'1" x 11'1"
Bedroom 2	2.83m x 3.72m	12'3" x 9'3"
Bathroom	2.00m x 1.77m	6'7" x 5'10"

ALL ROOMS ARE MEASURED FROM POINT TO POINT AS INDICATED ▲

The plans, illustrations, photography and sizes are indicative. The images depict standard specification and optional upgrades. Choices available depending on build stage. We operate a policy of continuous product development and therefore individual features, specification and elevational treatments may vary at the discretion of Campion Homes. Consequently, these particulars do not form any part of any contract.

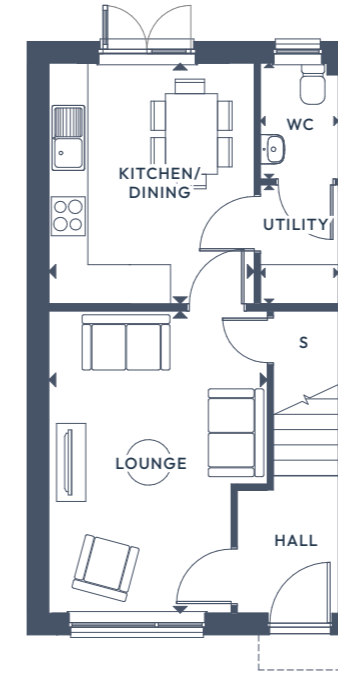


The Mimosa.

2 BEDROOM END TERRACE

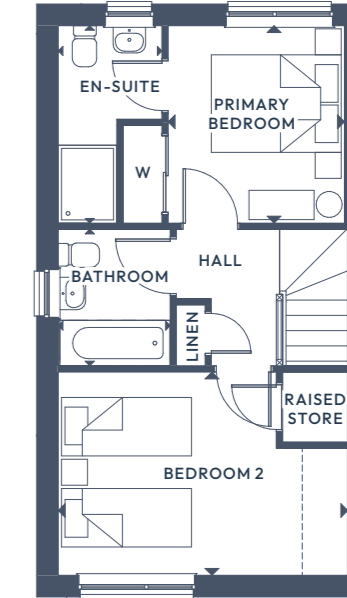
GROUND FLOOR:

FIRST FLOOR:



GROUND FLOOR

Lounge	4.65m x 3.36m	15'3" x 11'0 1/2"
Kitchen/Dining	3.70m x 3.16m	12'1 1/2" x 10'4 1/2"
WC	1.78m x 1.20m	5'10" x 3'11"
Utility	1.83m x 1.20m	6'0" x 3'11"



FIRST FLOOR

Primary Bedroom	3.04m x 2.72m	9'11 1/2" x 8'11"
Bedroom 2	3.13m x 4.46m	10'3" x 14'7 1/2"
Bathroom	2.10m x 1.73m	6'10 1/2" x 5'8"
En-Suite	2.83m x 1.60m	9'3 1/2" x 5'3"

ALL ROOMS ARE MEASURED FROM POINT TO POINT AS INDICATED ▲

The plans, illustrations, photography and sizes are indicative. The images depict standard specification and optional upgrades. Choices available depending on build stage. We operate a policy of continuous product development and therefore individual features, specification and elevational treatments may vary at the discretion of Campion Homes. Consequently, these particulars do not form any part of any contract.

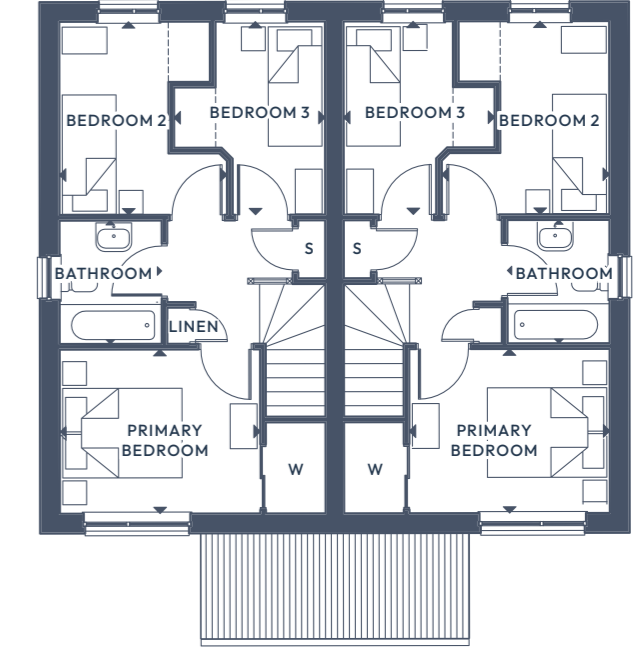
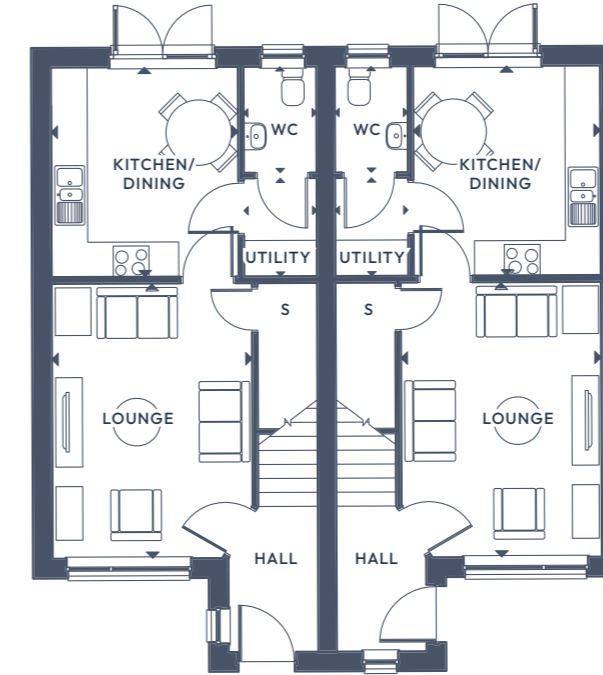


The Hazel.

3 BEDROOM SEMI-DETACHED

GROUND FLOOR:

FIRST FLOOR:



GROUND FLOOR

Lounge	4.61m x 3.36m	15'1 1/2" x 11'0"
Kitchen/Dining	3.52m x 3.14m	11'6 1/2" x 10'3 1/2"
Utility	1.64m x 1.22m	5'4 1/2" x 4'0"
WC	1.78m x 1.22m	5'10" x 4'0"

FIRST FLOOR

Primary Bedroom	2.75m x 3.36m	9'0" x 11'0"
Bedroom 2	3.24m x 2.52m	10'7 1/2" x 8'3 1/2"
Bedroom 3	3.24m x 2.53m	10'7 1/2" x 8'3 1/2"
Bathroom	2.07m x 1.71m	6'9 1/2" x 5'7 1/2"

ALL ROOMS ARE MEASURED FROM POINT TO POINT AS INDICATED ▲

The plans, illustrations, photography and sizes are indicative. The images depict standard specification and optional upgrades. Choices available depending on build stage. We operate a policy of continuous product development and therefore individual features, specification and elevational treatments may vary at the discretion of Campion Homes. Consequently, these particulars do not form any part of any contract.

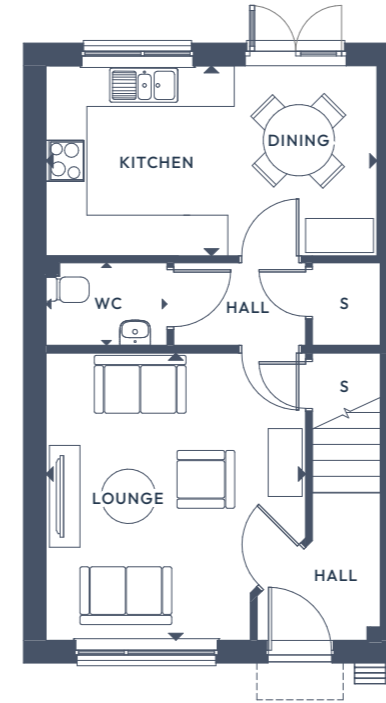


The Holly.

3 BEDROOM END TERRACE

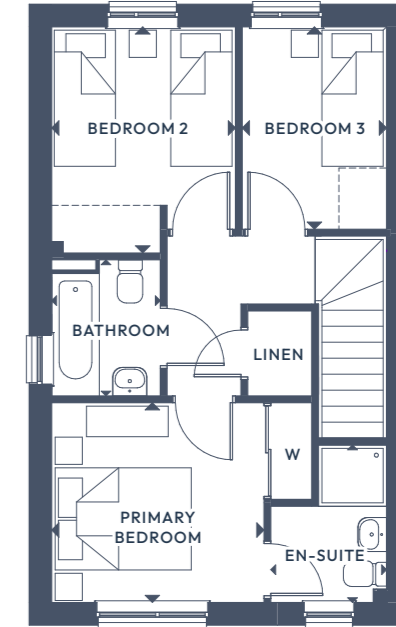
GROUND FLOOR:

FIRST FLOOR:



GROUND FLOOR

Lounge	4.24m x 3.82m	13'10 1/2" x 12'6 1/2"
Kitchen/Dining	2.80m x 4.87m	9'2" x 15'11 1/2"
WC	1.22m x 1.78m	4'0" x 5'10"



FIRST FLOOR

Primary Bedroom	2.94m x 3.12m	9'7 1/2" x 10'3"
En-Suite	2.32m x 1.70m	7'7" x 5'7"
Bedroom 2	3.32m x 2.70m	10'11" x 8'10 1/2"
Bedroom 3	2.98m x 2.12m	9'9" x 6'11 1/2"
Bathroom	2.00m x 1.60m	6'6 1/2" x 5'3"

ALL ROOMS ARE MEASURED FROM POINT TO POINT AS INDICATED ▲

The plans, illustrations, photography and sizes are indicative. The images depict standard specification and optional upgrades. Choices available depending on build stage. We operate a policy of continuous product development and therefore individual features, specification and elevational treatments may vary at the discretion of Campion Homes. Consequently, these particulars do not form any part of any contract.

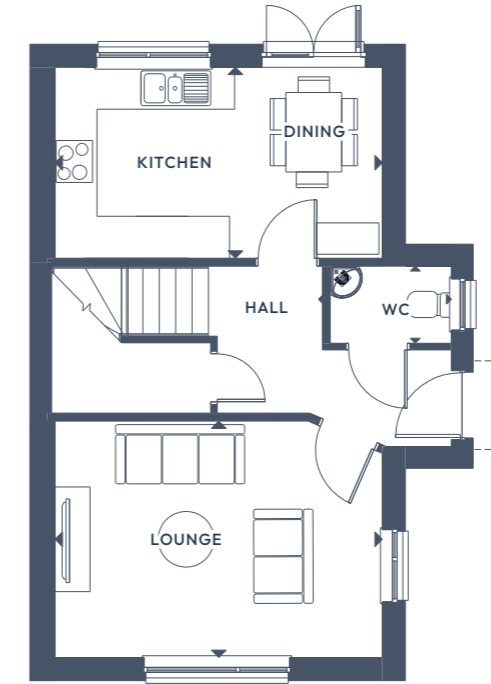


The Fern.

3 BEDROOM END TERRACE

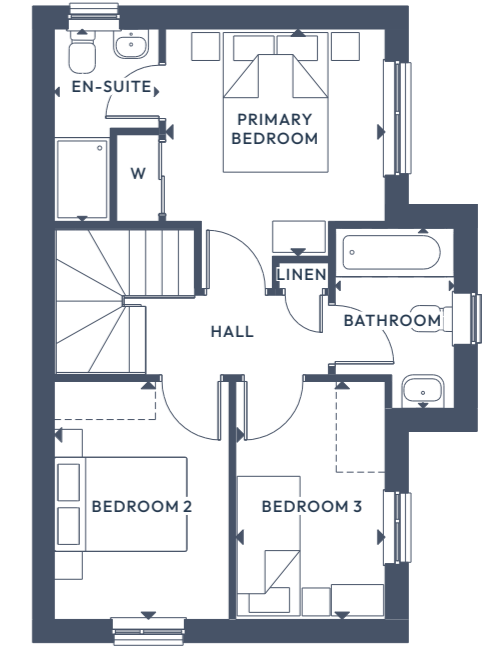
GROUND FLOOR:

FIRST FLOOR:



GROUND FLOOR

Lounge	3.39m x 4.69m	11'1 1/2" x 15'4 1/2"
Kitchen/Dining	2.74m x 4.69m	8'11 1/2" x 15'4 1/2"
WC	1.11m x 1.90m	3'7 1/2" x 6'3"



FIRST FLOOR

Primary Bedroom	3.26m x 3.14m	10'8" x 10'3 1/2"
Bedroom 2	3.41m x 2.51m	11'2 1/2" x 8'2 1/2"
Bedroom 3	3.41m x 2.14m	11'2 1/2" x 7'0 1/2"
Bathroom	2.11m x 1.71m	6'10 1/2" x 5'7"
En-Suite	2.75m x 1.50m	8'11" x 4'11"

ALL ROOMS ARE MEASURED FROM POINT TO POINT AS INDICATED ▲

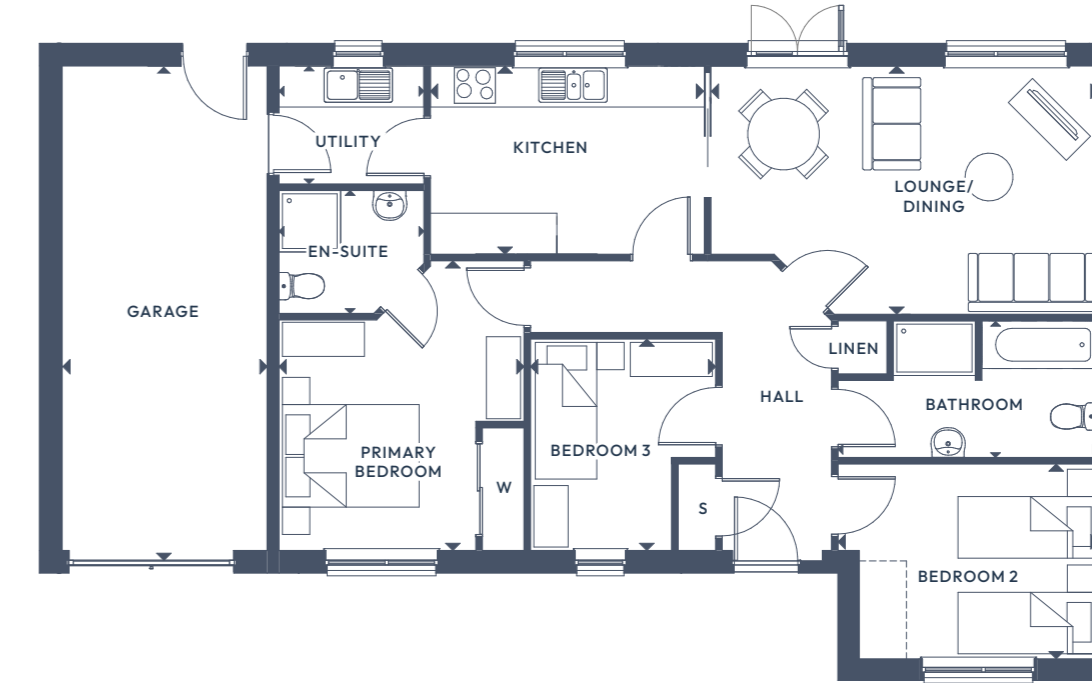
The plans, illustrations, photography and sizes are indicative. The images depict standard specification and optional upgrades. Choices available depending on build stage. We operate a policy of continuous product development and therefore individual features, specification and elevational treatments may vary at the discretion of Campion Homes. Consequently, these particulars do not form any part of any contract.



The Tamarisk.

3 BEDROOM DETACHED BUNGALOW

GROUND FLOOR:



GROUND FLOOR

Lounge/Dining	5.66m x 3.63m	18'5" x 11'9"	Bedroom 2	3.80m x 2.85m	12'6" x 9'4 1/2"
Kitchen	4.00m x 2.75m	13'2" x 9'0"	Bedroom 3	3.09m x 2.71m	10'2" x 8'10 1/2"
Utility	2.12m x 1.72m	6'11 1/2" x 5'8"	Bathroom	3.80m x 2.00m	12'6" x 6'7"
Primary Bedroom	4.24m x 3.58m	13'11" x 11'9"	Garage	7.00m x 3.00m	22'11" x 9'10"
En-Suite	2.12m x 1.80m	6'11 1/2" x 5'11"			

ALL ROOMS ARE MEASURED FROM POINT TO POINT AS INDICATED ▲

The plans, illustrations, photography and sizes are indicative. The images depict standard specification and optional upgrades. Choices available depending on build stage. We operate a policy of continuous product development and therefore individual features, specification and elevational treatments may vary at the discretion of Campion Homes. Consequently, these particulars do not form any part of any contract.

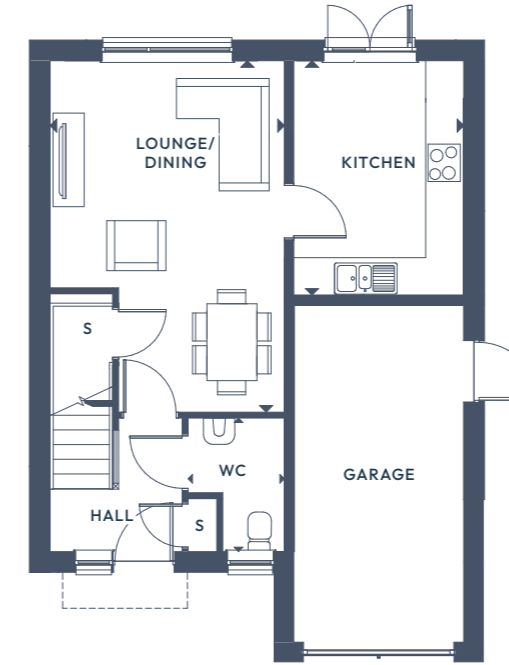


The Mulberry.

3 BEDROOM DETACHED

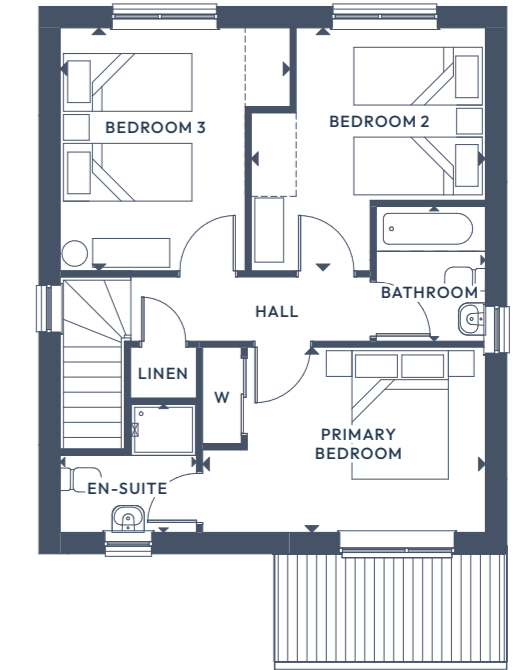
GROUND FLOOR:

FIRST FLOOR:



GROUND FLOOR

Lounge/Dining	5.63m x 3.75m	18'2" x 12'3 1/2"
Kitchen	3.75m x 2.72m	12'3 1/2" x 8'11"
WC	2.14m x 1.50m	7'00" x 4'11"
Garage	5.40m x 2.70m	17'8 1/2" x 8'10"



FIRST FLOOR

Primary Bedroom	2.89m x 4.41m	9'5 1/2" x 14'5 1/2"
En-Suite	2.00m x 2.12m	6'6 1/2" x 6'11 1/2"
Bedroom 2	3.79m x 3.58m	12'5" x 11'11"
Bedroom 3	3.79m x 3.65m	12'5" x 11'9"
Bathroom	2.10m x 1.70m	6'10 1/2" x 5'7"

ALL ROOMS ARE MEASURED FROM POINT TO POINT AS INDICATED ▲

The plans, illustrations, photography and sizes are indicative. The images depict standard specification and optional upgrades. Choices available depending on build stage. We operate a policy of continuous product development and therefore individual features, specification and elevational treatments may vary at the discretion of Campion Homes. Consequently, these particulars do not form any part of any contract.

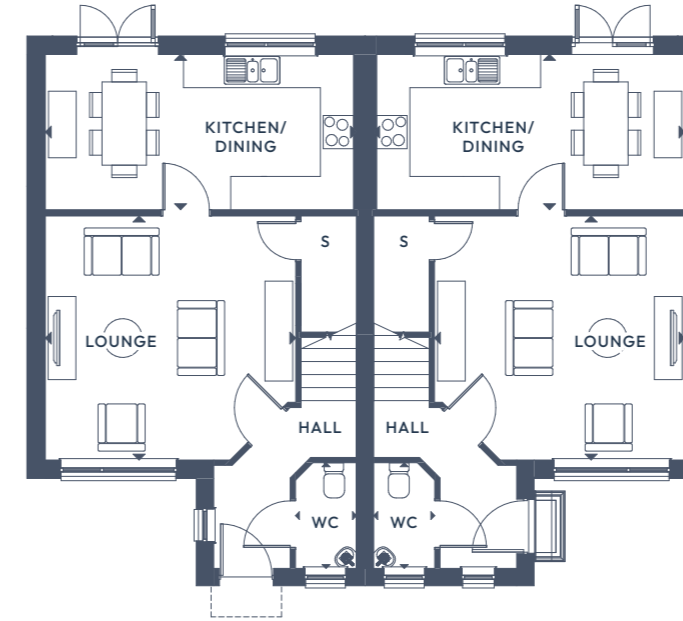


The Myrtle.

3 BEDROOM SEMI-DETACHED

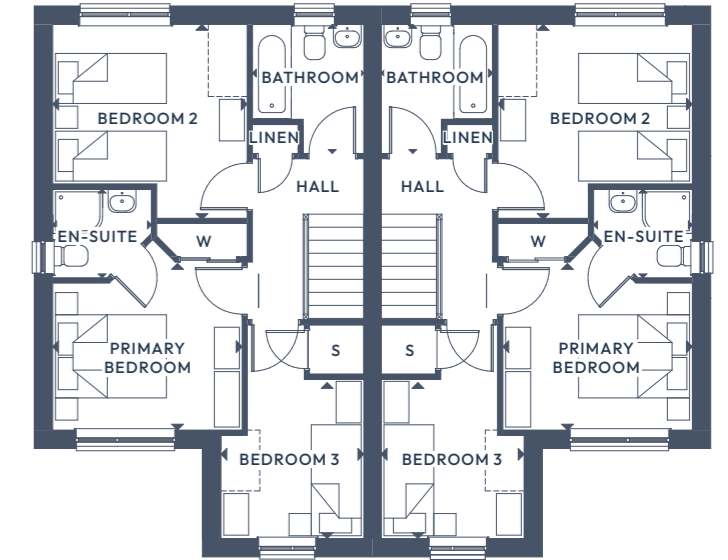
GROUND FLOOR:

FIRST FLOOR:



GROUND FLOOR

Lounge	4.40m x 4.52m	14'5" x 14'10"
Kitchen/Dining	2.80m x 5.56m	9'2" x 18'3"
WC	1.91m x 1.10m	6'3" x 3'7 1/2"



FIRST FLOOR

Primary Bedroom	3.03m x 3.42m	9'11 1/2" x 11'2 1/2"
En-Suite	1.60m x 1.78m	5'3" x 5'10"
Bedroom 2	3.49m x 3.51m	11'5 1/2" x 11'6"
Bedroom 3	3.85m x 2.58m	12'7 1/2" x 8'5 1/2"
Bathroom	2.33m x 2.01m	7'7 1/2" x 6'7"

ALL ROOMS ARE MEASURED FROM POINT TO POINT AS INDICATED ▲

The plans, illustrations, photography and sizes are indicative. The images depict standard specification and optional upgrades. Choices available depending on build stage. We operate a policy of continuous product development and therefore individual features, specification and elevational treatments may vary at the discretion of Campion Homes. Consequently, these particulars do not form any part of any contract.

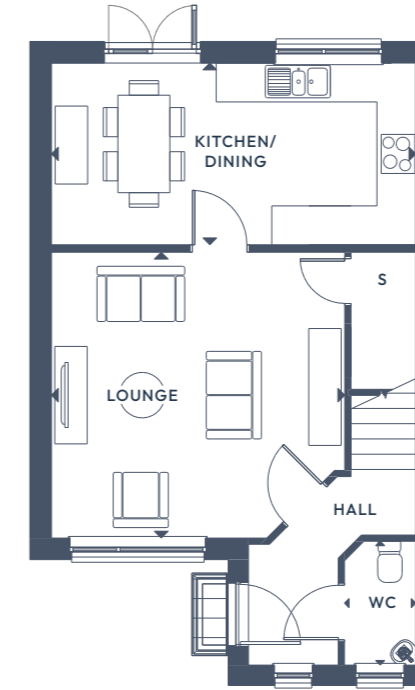


The Alamanda.

3 BEDROOM DETACHED

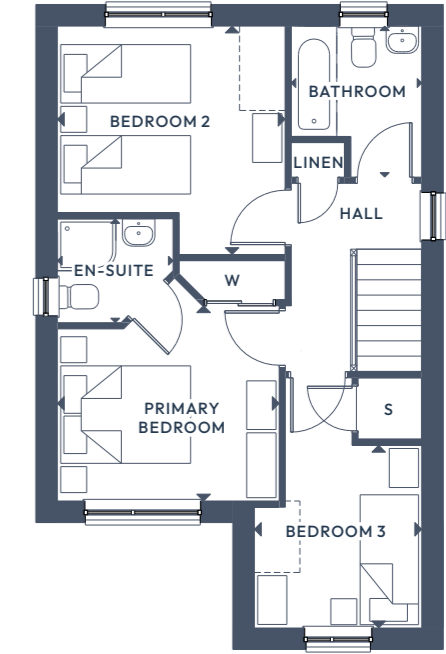
GROUND FLOOR:

FIRST FLOOR:



GROUND FLOOR

Lounge	4.40m x 4.52m	14'5" x 14'10"
Kitchen/Dining	2.80m x 5.61m	9'2" x 18'5"
WC	1.91m x 1.10m	6'3" x 3'7 1/2"



FIRST FLOOR

Primary Bedroom	3.01m x 3.42m	9'10 1/2" x 11'2 1/2"
En-Suite	1.60m x 1.78m	5'3" x 5'10"
Bedroom 2	3.52m x 3.51m	11'6 1/2" x 11'6"
Bedroom 3	3.85m x 2.58m	12'7 1/2" x 8'5 1/2"
Bathroom	2.33m x 2.01m	7'7 1/2" x 6'7"

ALL ROOMS ARE MEASURED FROM POINT TO POINT AS INDICATED ▲

The plans, illustrations, photography and sizes are indicative. The images depict standard specification and optional upgrades. Choices available depending on build stage. We operate a policy of continuous product development and therefore individual features, specification and elevational treatments may vary at the discretion of Campion Homes. Consequently, these particulars do not form any part of any contract.

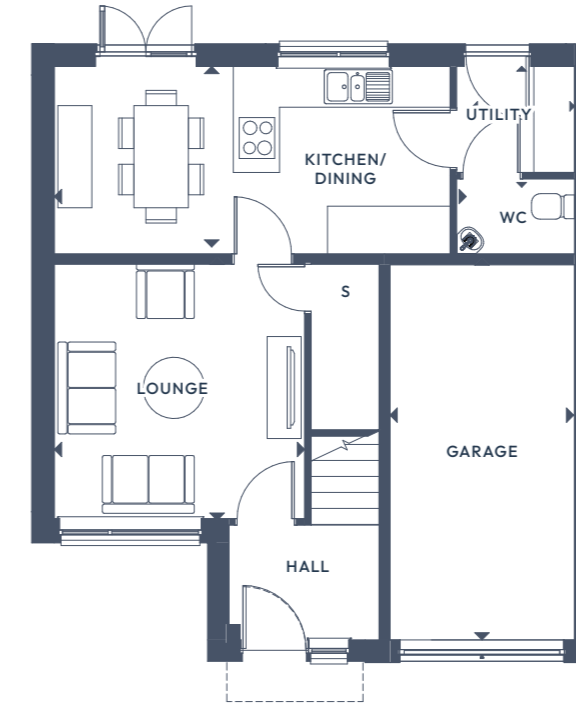


The Maple.

4 BEDROOM DETACHED

GROUND FLOOR:

FIRST FLOOR:



GROUND FLOOR

Lounge	3.86m x 3.68m	12'8" x 12'0 1/2"
Kitchen/Dining	2.66m x 6.05m	8'8 1/2" x 19'10 1/2"
WC	1.78m x 1.50m	5'10" x 4'11"
Garage	5.60m x 2.70m	18'4 1/2" x 8'10 1/2"



FIRST FLOOR

Primary Bedroom	4.16m x 2.78m	13'7 1/2" x 9'1 1/2"
En-Suite	1.66m x 2.20m	5'5 1/2" x 7'3"
Bedroom 2	3.00m x 3.68m	9'10" x 12'0 1/2"
Bedroom 3	3.58m x 2.73m	11'8 1/2" x 8'11 1/2"
Bedroom 4	2.98m x 2.76m	9'9 1/2" x 9'0 1/2"
Bathroom	2.38m x 1.96m	7'9 1/2" x 6'5"

ALL ROOMS ARE MEASURED FROM POINT TO POINT AS INDICATED ▲

The plans, illustrations, photography and sizes are indicative. The images depict standard specification and optional upgrades. Choices available depending on build stage. We operate a policy of continuous product development and therefore individual features, specification and elevational treatments may vary at the discretion of Campion Homes. Consequently, these particulars do not form any part of any contract.

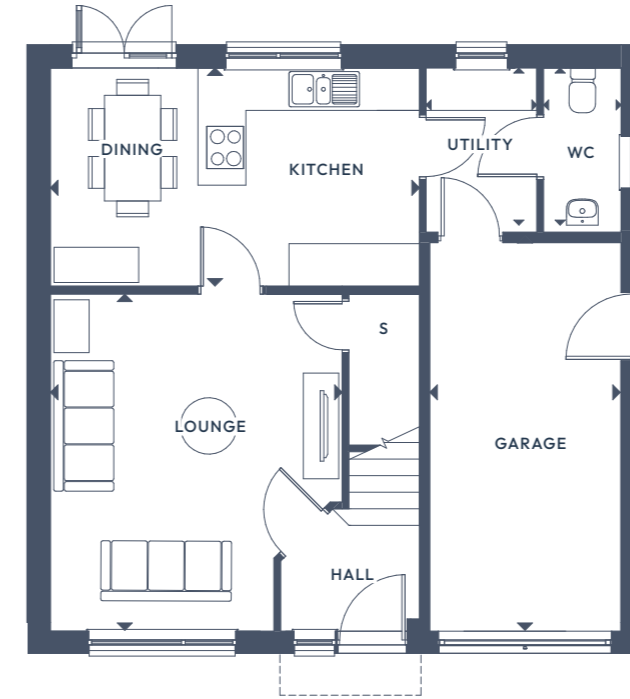


The Wisteria.

4 BEDROOM DETACHED

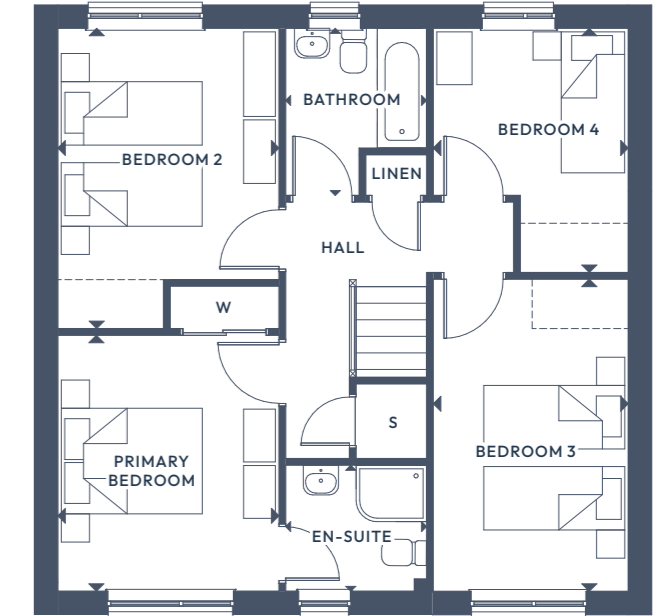
GROUND FLOOR:

FIRST FLOOR:



GROUND FLOOR

Lounge	4.78m x 4.14m	15'8 1/2" x 13'7"
Kitchen/Dining	3.09m x 5.23m	10'1 1/2" x 17'2"
Utility	2.23m x 1.57m	7'3 1/2" x 5'2"
WC	2.23m x 1.10m	7'3 1/2" x 3'7 1/2"
Garage	5.60m x 2.70m	18'4 1/2" x 8'10 1/2"



FIRST FLOOR

Primary Bedroom	3.63m x 3.14m	11'11" x 10'3 1/2"
En-Suite	1.79m x 2.00m	5'10 1/2" x 6'7"
Bedroom 2	4.26m x 3.14m	13'11 1/2" x 10'3 1/2"
Bedroom 3	4.43m x 2.76m	14'6 1/2" x 9'1"
Bedroom 4	3.47m x 2.77m	11'4 1/2" x 9'1"
Bathroom	2.37m x 2.00m	7'9 1/2" x 6'7"

ALL ROOMS ARE MEASURED FROM POINT TO POINT AS INDICATED ▲

The plans, illustrations, photography and sizes are indicative. The images depict standard specification and optional upgrades. Choices available depending on build stage. We operate a policy of continuous product development and therefore individual features, specification and elevational treatments may vary at the discretion of Campion Homes. Consequently, these particulars do not form any part of any contract.

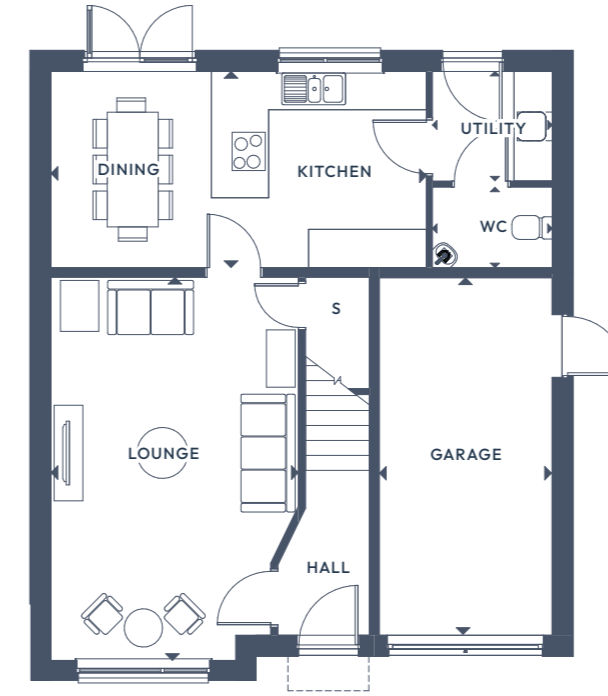


The Laburnum.

4 BEDROOM DETACHED

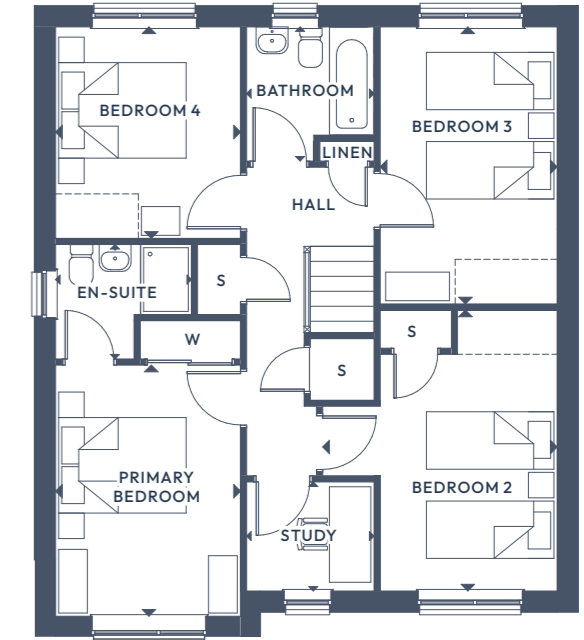
GROUND FLOOR:

FIRST FLOOR:



GROUND FLOOR

Lounge	6.02m x 3.90m	19'9" x 12'9 1/2"
Kitchen/Dining	3.08m x 5.89m	10'1" x 19'4"
Utility	1.72m x 1.88m	5'7 1/2" x 6'2"
WC	1.27m x 1.88m	4'2" x 6'2"
Garage	5.60m x 2.70m	18'4 1/2" x 8'10 1/2"



FIRST FLOOR

Primary Bedroom	3.94m x 2.90m	12'11" x 9'6 1/2"
En-Suite	1.80m x 2.13m	5'10 1/2" x 7'0"
Bedroom 2	4.41m x 3.69m	14'5 1/2" x 12'1"
Bedroom 3	4.35m x 2.78m	14'3" x 9'1 1/2"
Bedroom 4	3.32m x 2.90m	10'10 1/2" x 9'6 1/2"
Study	1.71m x 2.00m	5'7 1/2" x 6'7"
Bathroom	2.16m x 2.00m	6'11" x 6'7"

ALL ROOMS ARE MEASURED FROM POINT TO POINT AS INDICATED ▲

The plans, illustrations, photography and sizes are indicative. The images depict standard specification and optional upgrades. Choices available depending on build stage. We operate a policy of continuous product development and therefore individual features, specification and elevational treatments may vary at the discretion of Campion Homes. Consequently, these particulars do not form any part of any contract.

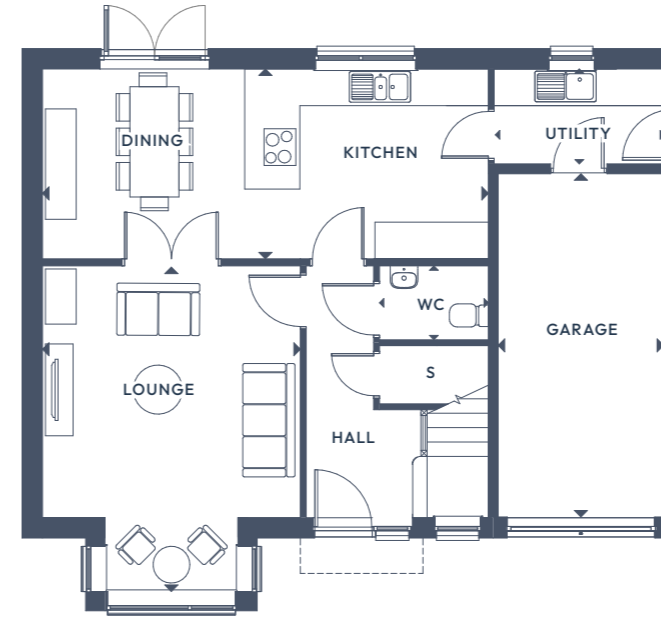


The Jacaranda.

5 BEDROOM DETACHED

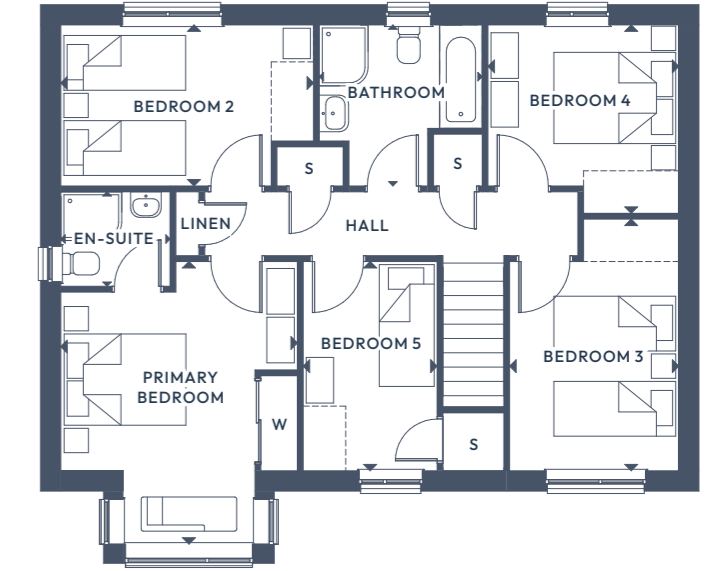
GROUND FLOOR: WC

FIRST FLOOR:



GROUND FLOOR

Lounge	5.31m x 4.21m	17'5" x 13' 9 1/2"
Kitchen/Dining	3.10m x 7.28m	10'2 x 23'10 1/2"
Utility	1.55m x 2.78m	5'1" x 9'1 1/2"
WC	1.21m x 1.78m	3'11 1/2" x 5'10"
Garage	5.60m x 2.70m	18'4 1/2" x 8'10 1/2"



FIRST FLOOR

Primary Bedroom	4.64m x 3.89m	15'3" x 12'9"
En-Suite	1.55m x 1.80m	5'1" x 5'10 1/2"
Bedroom 2	2.65m x 4.15m	8'8" x 13'7 1/2"
Bedroom 3	4.13m x 2.79m	13'7" x 9'1 1/2"
Bedroom 4	3.10m x 3.13m	10'2" x 10'3 1/2"
Bedroom 5	3.44m x 2.20m	11'3 1/2" x 7'2 1/2"
Bathroom	2.68m x 2.65m	8'9 1/2" x 8'8"

ALL ROOMS ARE MEASURED FROM POINT TO POINT AS INDICATED ▲

The plans, illustrations, photography and sizes are indicative. The images depict standard specification and optional upgrades. Choices available depending on build stage. We operate a policy of continuous product development and therefore individual features, specification and elevational treatments may vary at the discretion of Campion Homes. Consequently, these particulars do not form any part of any contract.

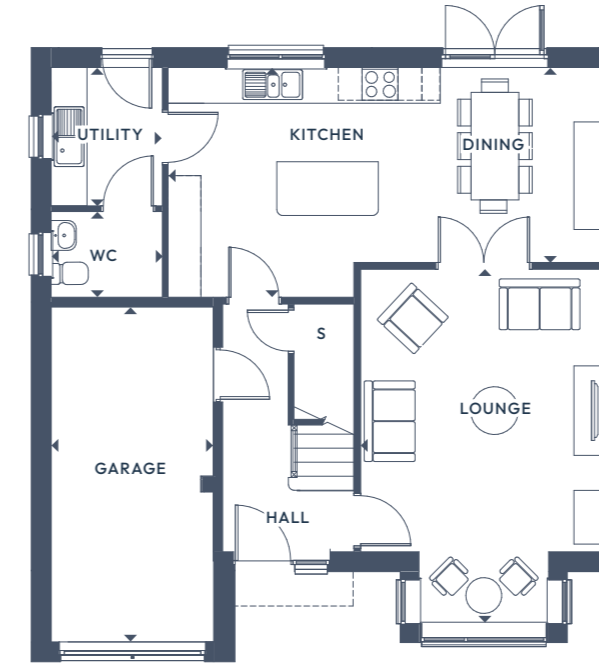


The Oleander.

4 BEDROOM DETACHED

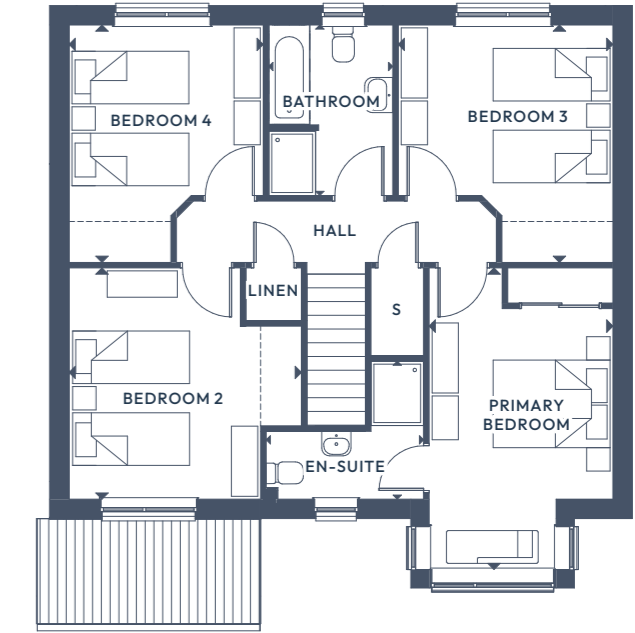
GROUND FLOOR:

FIRST FLOOR:



GROUND FLOOR

Lounge	5.97m x 4.12m	19'7" x 13'6"
Kitchen/Dining	3.85m x 7.35m	12'7 1/2" x 24'1"
Utility	2.32m x 1.86m	7'7 1/2" x 6'1 1/2"
WC	1.44m x 1.86m	4'8 1/2" x 6'1 1/2"
Garage	5.60m x 2.70m	18'4 1/2" x 8'10 1/2"



FIRST FLOOR

Primary Bedroom	5.20m x 3.12m	17'0 1/2" x 10'3"
En-Suite	2.36m x 2.72m	7'9" x 8'11"
Bedroom 2	3.96m x 3.98m	12'11 1/2" x 13'0 1/2"
Bedroom 3	4.06m x 3.67m	13'4" x 12'0 1/2"
Bedroom 4	4.06m x 3.32m	13'4" x 10'11"
Bathroom	2.92m x 2.12m	9'7" x 6'11 1/2"

ALL ROOMS ARE MEASURED FROM POINT TO POINT AS INDICATED ▲

The plans, illustrations, photography and sizes are indicative. The images depict standard specification and optional upgrades. Choices available depending on build stage. We operate a policy of continuous product development and therefore individual features, specification and elevational treatments may vary at the discretion of Campion Homes. Consequently, these particulars do not form any part of any contract.

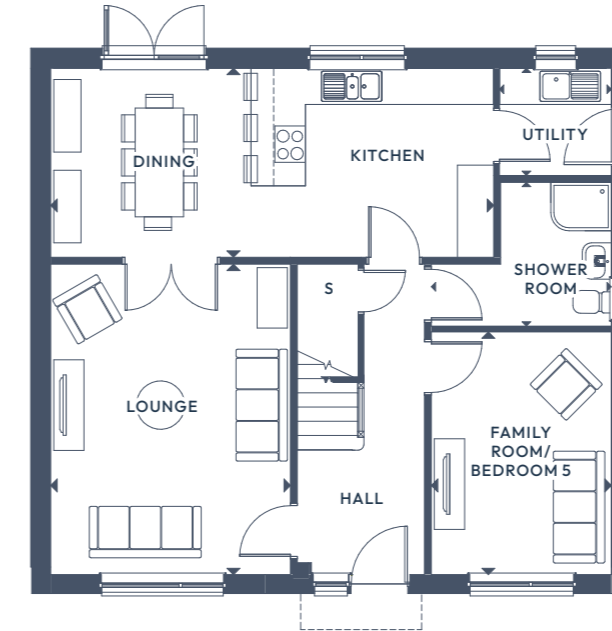


The Orchid.

5 BEDROOM DETACHED

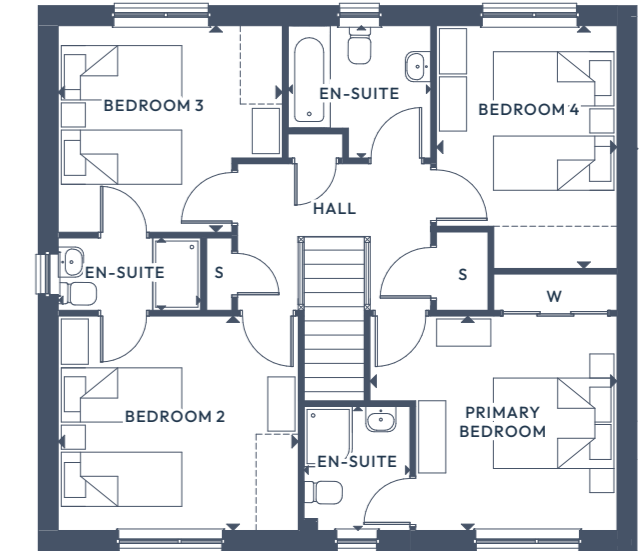
GROUND FLOOR:

FIRST FLOOR:



GROUND FLOOR

Lounge	5.14m x 3.96m	16'10" x 13'0"
Kitchen/Dining	7.33m x 3.13m	24'0 1/2" x 10'3"
Utility	1.78m x 1.85m	5'10" x 6'1"
Shower Room	2.38m x 2.98m	7'9 1/2" x 9'9"
Family Room/Bedroom 5	4.02m x 2.98m	13'2" x 9'9"



FIRST FLOOR

Primary Bedroom	3.56m x 4.10m	11'8" x 13' 5 1/2"
Primary En-Suite	2.06m x 1.76m	6'9" x 5'9"
Bedroom 2	3.56m x 3.98m	11'8" x 13' 1"
En-Suite	1.20m x 2.37m	3'11" x 7'9"
Bedroom 3	3.43m x 3.72m	11'3" x 12'2 1/2"
Bedroom 4	4.03m x 3.00m	13'2 1/2" x 9'10"
Bathroom	2.20m x 2.37m	7'2 1/2" x 7'9"

ALL ROOMS ARE MEASURED FROM POINT TO POINT AS INDICATED ▲

The plans, illustrations, photography and sizes are indicative. The images depict standard specification and optional upgrades. Choices available depending on build stage. We operate a policy of continuous product development and therefore individual features, specification and elevational treatments may vary at the discretion of Campion Homes. Consequently, these particulars do not form any part of any contract.

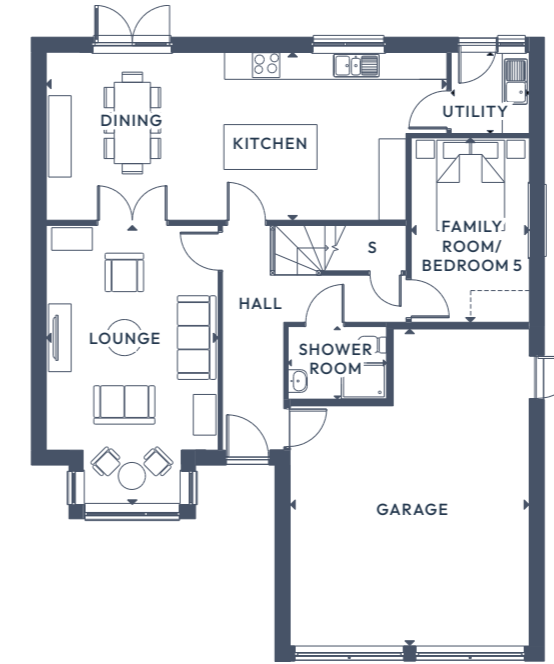


The Azalea.

5 BEDROOM DETACHED

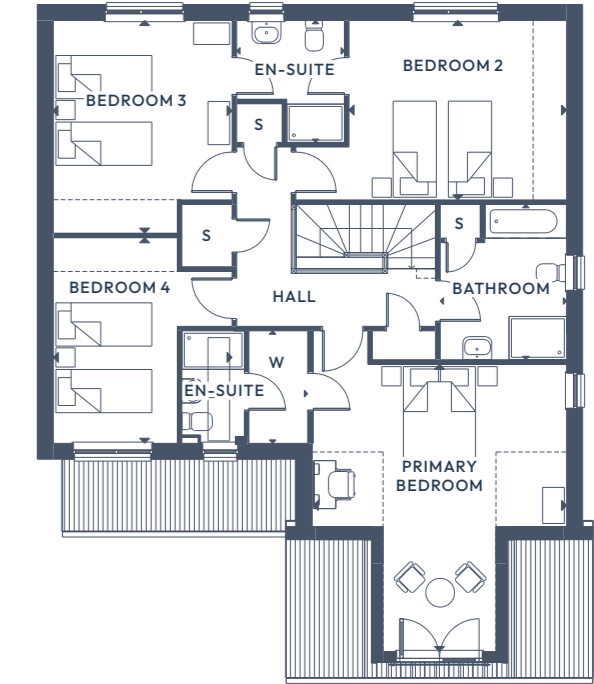
GROUND FLOOR:

FIRST FLOOR:



GROUND FLOOR

Lounge	6.17m x 3.80m	20'3" x 12'5 1/2"
Kitchen/Dining	3.72m x 8.86m	12'2 1/2" x 29'0 1/2"
Utility	1.80m x 1.73m	5'11" x 5'8"
Shower Room	1.61m x 2.18m	5'3" x 7'1 1/2"
Bedroom 5	4.08m x 2.61m	13'4 1/2" x 8'7"
Garage	5.98m x 5.28m	19'7 1/2" x 17'3 1/2"



FIRST FLOOR

Primary Bedroom	5.98m x 5.28m	19'7 1/2" x 17'3 1/2"
En-Suite	2.34m x 1.30m	7'8" x 4'3"
Wardrobe	2.34m x 1.23m	7'8" x 4'0"
Bedroom 2	3.73m x 5.64m	12'3" x 18'6"
Bedroom 3	4.43m x 3.72m	14'6" x 12'2 1/2"
En-Suite	2.54m x 2.24m	8'4" x 7'4 1/2"
Bedroom 4	4.28m x 3.72m	14'0 1/2" x 12'2 1/2"
Bathroom	3.23m x 2.63m	10'7" x 8'7 1/2"

ALL ROOMS ARE MEASURED FROM POINT TO POINT AS INDICATED ▲

The plans, illustrations, photography and sizes are indicative. The images depict standard specification and optional upgrades. Choices available depending on build stage. We operate a policy of continuous product development and therefore individual features, specification and elevational treatments may vary at the discretion of Campion Homes. Consequently, these particulars do not form any part of any contract.

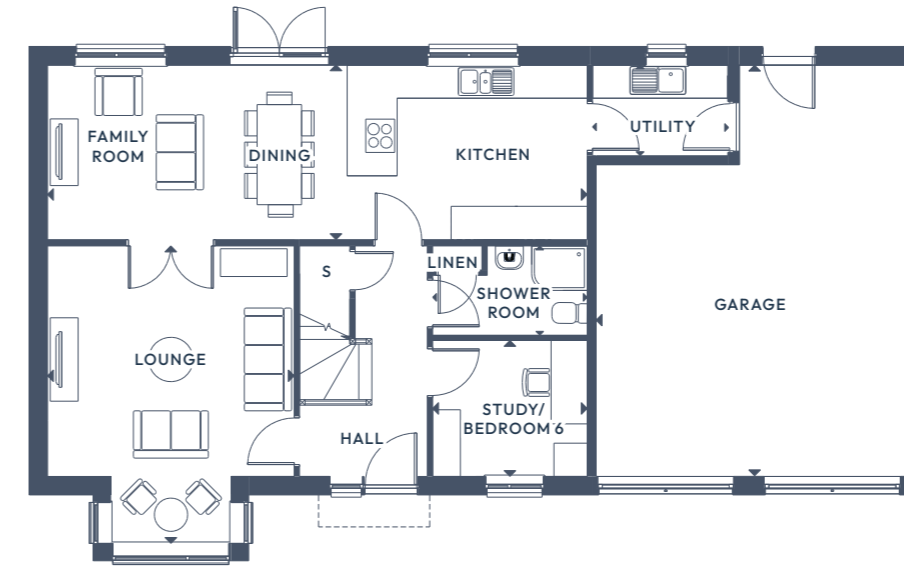


The Camellia.

6 BEDROOM DETACHED

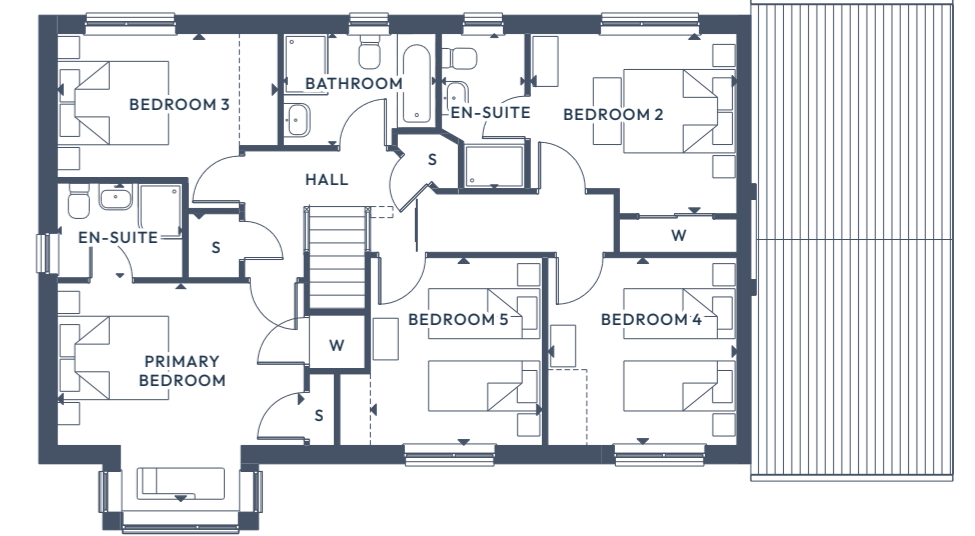
GROUND FLOOR:

FIRST FLOOR:



GROUND FLOOR

Lounge	5.39m x 4.44m	17'8" x 14'7"
Kitchen/Dining/Family	3.15m x 9.71m	10'4" x 31'10 1/2"
Study/Bedroom 6	2.45m x 2.78m	8'0 1/2" x 9'1 1/2"
Utility	1.63m x 2.43m	5'4 1/2" x 8'0"
Shower Room	1.61m x 2.78m	5'3" x 9'1 1/2"
Garage	7.40m x 5.70m	24'3" x 18'8 1/2"



FIRST FLOOR

Primary Bedroom	4.44m x 4.13m	14'7" x 13'7"
En-Suite	2.79m x 1.50m	9'2" x 4'11"
Bedroom 2	3.74m x 3.24m	12'3" x 10'8"
En-Suite	1.70m x 2.26m	5'7" x 7'5"
Bedroom 3	3.42m x 3.38m	11'3" x 11'2"
Bedroom 4	3.65m x 3.38m	11'7" x 11'2"
Bedroom 5	3.97m x 3.15m	13'0" x 10'4"
Bathroom	2.02m x 2.75m	6'7 1/2" x 9'0 1/2"

ALL ROOMS ARE MEASURED FROM POINT TO POINT AS INDICATED ▲

The plans, illustrations, photography and sizes are indicative. The images depict standard specification and optional upgrades. Choices available depending on build stage. We operate a policy of continuous product development and therefore individual features, specification and elevational treatments may vary at the discretion of Campion Homes. Consequently, these particulars do not form any part of any contract.



The Magnolia.

6 BEDROOM DETACHED

GROUND FLOOR:

FIRST FLOOR:



GROUND FLOOR

Lounge	7.59m x 4.75m	24'11" x 15'7"
Dining	4.44m x 3.17m	14'7" x 10'9"
Kitchen	3.59m x 4.04m	11'9½" x 13'3"
Utility	3.59m x 1.86m	11'9½" x 6'1"
Shower Room	1.62m x 2.68m	5'3½" x 8'9½"
Bedroom 6	4.40m x 3.51m	14'5" x 11'6"
Garage	6.87m x 5.38m	22'7" x 17'6"



FIRST FLOOR

Primary Bedroom	3.26m x 5.12m	10'8 ½" x 16'10 ½"
En-Suite	1.86m x 3.00m	5'11 ½" x 9'10"
Dressing Room	1.78m x 2.04m	5'10" x 6'8"
Bedroom 2	3.75m x 4.75m	12'4" x 15'7"
Bedroom 3	4.69m x 2.96m	15'4 ½" x 9'8 ½"
En-Suite	1.93m x 3.05m	6'4" x 10'0"
Bedroom 4	4.69m x 2.96m	15'4 ½" x 9'8 ½"
Bedroom 5/Study	3.74m x 3.44m	12'3½" x 11'3½"
Study/Nursery	2.47m x 3.51m	8'1" x 11'6½"
Bathroom	2.66m x 3.05m	8'8½" x 10'0"

ALL ROOMS ARE MEASURED FROM POINT TO POINT AS INDICATED ▲

The plans, illustrations, photography and sizes are indicative, the images depict standard specification and optional upgrades. Choices available depending on build stage. We operate a policy of continuous product development and therefore individual features, specification and elevational treatments may vary at the discretion of Campion Homes. Consequently, these particulars do not form any part of any contract.