

Symonds
& Sampson

Symonds
& Sampson
01935 423526
FOR SALE

82 Shackleton Road
Yeovil, Somerset

82 Shackleton Road

Yeovil
Somerset
BA21 5ET



- Well Presented
- Attractive Fitted Kitchen
- Garage and Parking
- Solar Panels providing Income
- Large Lawned Gardens
- Viewing Advised

Guide Price **£255,000**

Freehold

Yeovil Sales
01935 423526
yeovil@symondsandsampson.co.uk



THE DWELLING

A well-presented end-of-three property having gas central heating, UPVC double glazing, solar panels providing income and an external electric car charger.

The property is attractive and spacious throughout, and an early viewing is advised.

ACCOMMODATION

A part-glazed entrance door leads to the reception hall, having a storage cupboard and a staircase rising to the first floor, whilst off here is a cloakroom with a white suite.

The kitchen overlooks the front of the property and has a comprehensive range of units with timber effect worktops, white doors and stainless steel door furniture.

Fitted appliances include a four ring hob with stainless steel splash back and hood, oven, dishwasher and fridge-freezer, whilst there is a good range of base units with drawers and cupboards under, wall cupboards and a cupboard housing the gas boiler.

The sitting room is a good size, having upvc double glazed French doors to the rear.

On the first floor is a landing with a hatch to the roof space

and further storage cupboard, whilst there are three bedrooms with an en suite shower room with a white suite to the master and an attractive family bathroom again with a white suite and a bath having a hand-held shower attachment.

OUTSIDE

There are small gardens to the front, whilst to the rear the garden is a good size being laid to lawn, having a patio and enclosed by lap panel fencing.

At the side of the house is parking, which in turn leads to a garage situated under a coach house with an up and over door and personal door to the garden.

SITUATION

The property is situated on the south-eastern side of Yeovil on a recently built residential development. Local facilities are very good, with a comprehensive range of shops, public houses, supermarkets and schools of all educational levels. There is a regular bus service and a mainline railway service at Yeovil Junction.

Road links are excellent as Yeovil is placed jointly on the A30 and A37, with the A303 approximately 5 Miles away, giving in turn access to the M5 approximately 20 Miles away.

DIRECTIONS

What 3 words: [///remix.golden.herb](http://remix.golden.herb)

SERVICES

Mains water, gas, electricity and drainage. Gas-fired central heating and solar panels.

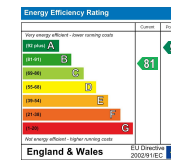
Broadband - Ultrafast broadband is available.

Mobile signal/coverage - There is mobile coverage in the area. Please refer to Ofcom's website for further reference

MATERIAL INFORMATION

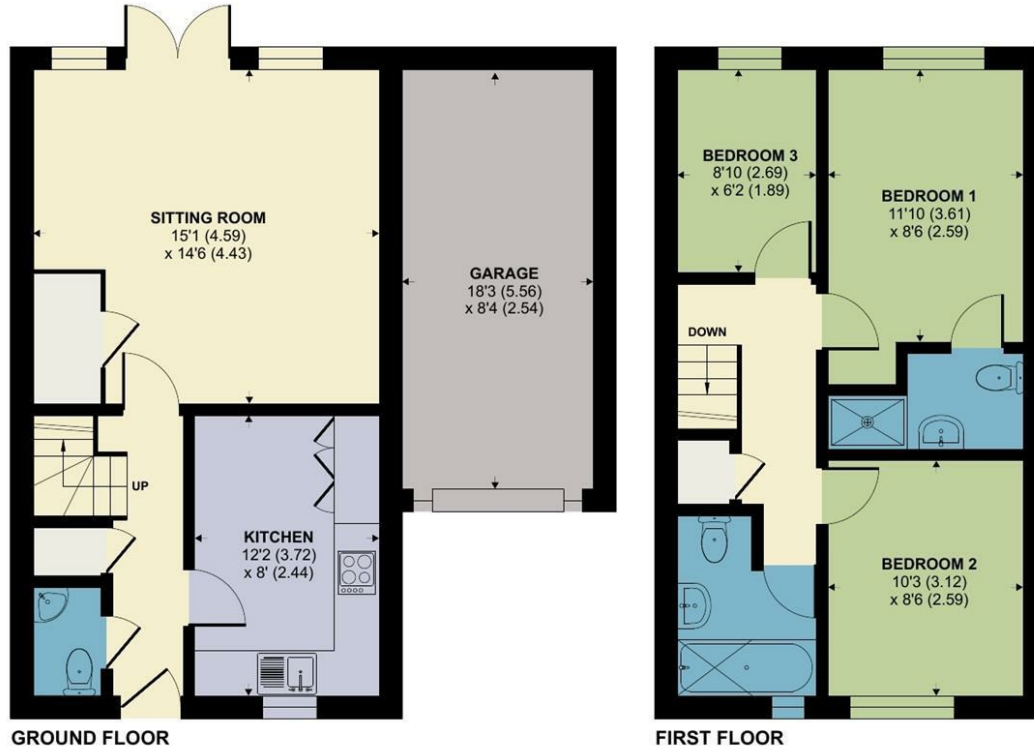
Council Tax Band: C

Flood Risk: Very Low



Shackleton Road, Yeovil

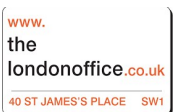
Approximate Area = 820 sq ft / 76.1 sq m
 Garage = 152 sq ft / 14.1 sq m
 Total = 972 sq ft / 90.2 sq m
 For identification only - Not to scale



Floor plan produced in accordance with RICS Property Measurement 2nd Edition, Incorporating International Property Measurement Standards (IPMS2 Residential). © nichecom 2026. Produced for Symonds & Sampson. REF: 1407019



YEO/JS/12.02.2026



01935 423526

yeovil@symondsandsampson.co.uk
 Symonds & Sampson LLP
 2, Court Ash,
 Yeovil, Somerset BA20 1HG



Important Notice: Symonds & Sampson LLP and their Clients give notice that: 1. They have no authority to make or give any representations or warranties in relation to the property. These particulars do not form part of any offer or contract and must not be relied upon as statements or representations of fact. 2. Any areas, measurements or distances are approximate. The text, photographs and plans are for guidance only and are not necessarily comprehensive. It should not be assumed that the properties have all necessary planning, building regulation or other consents and Symonds and Sampson LLP have not tested any services, equipment or facilities. 3. We have not made any investigation into the existence or otherwise of any issues concerning pollution of the land, air or water contamination and the purchaser is responsible for making his/her own enquiries in this regard. 4. The property is sold subject to and with the benefit of all existing wayleaves, easements and rights of way whether public or private, specifically mentioned or not. The vendors shall not be required to define any such rights, privileges or advantages.

SALES | LETTINGS | AUCTIONS | FARMS & LAND | COMMERCIAL | NEW HOMES | PLANNING & DEVELOPMENT