



## WILLESDEN LANE, NW6

£450,000

Chain Free  
Large Roof Terrace  
Two Double Bedrooms  
High Specification Finish  
High Ceilings Throughout  
Split Level

@marshandparsons  
marshandparsons.co.uk

MARSH &  
PARSONS



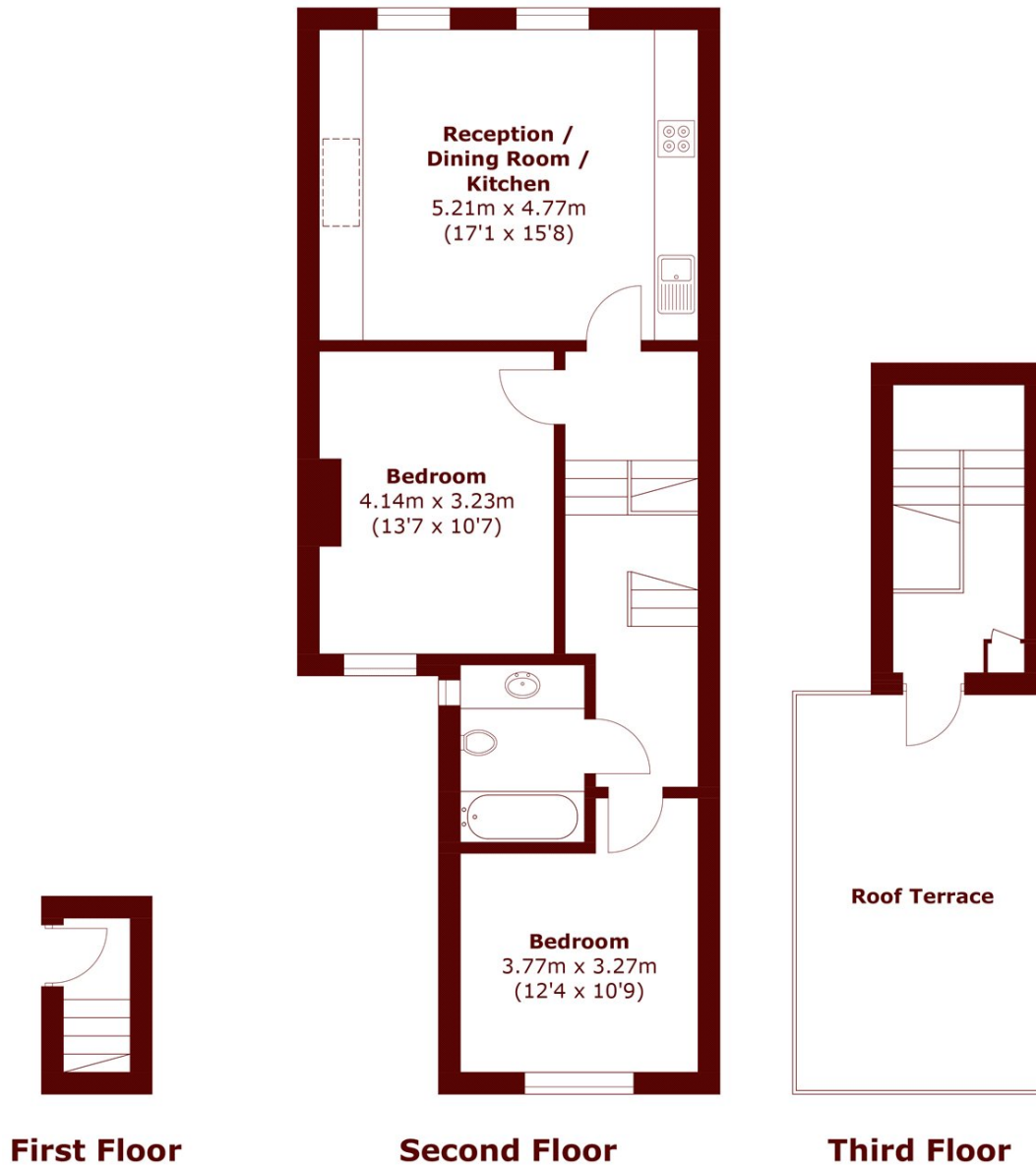
# ABOUT THE PROPERTY

This beautifully presented two-bedroom apartment offers an abundance of natural light, modern interiors, and generous living space. Set within a charming period building, the property boasts a spacious open-plan reception room with high ceilings, elegant wooden flooring, and a feature fireplace, seamlessly flowing into a sleek, fully-fitted kitchen with contemporary cabinetry and integrated appliances.

Both bedrooms are well-proportioned and benefit from large windows, creating a bright and airy feel. The stylish bathroom is finished to a high standard with modern fixtures and a clean, minimalist design. One of the standout features of this property is the expansive private



# STEP INSIDE WILLESDEN LANE



Total area (approx.): 72.9 sq. m (784.7 sq. ft)  
Roof Terrace: 18.4 sq. m (198.0 sq. ft)

Queen's Park  
020 7624 4513

Energy Rating: D We aim to make our particulars both accurate and reliable. However, they are not guaranteed; nor do they form part of an offer or contract. If you require clarification on any points then please contact us, especially if you're traveling some distance to view. Please note that appliances and heating systems have not been tested and therefore no warranties can be given as to their good working order

MARSH &  
PARSONS