



**4 Meadvale Close, Gloucester, GL2 9AU**

**Asking Price £280,000**

Meadvale Close is located in the heart of Longford, close to local shops, amenities and bus routes. Just a short drive into Gloucester City Centre and the historic docks.

The property has been beautifully updated by the current owner, taking it from a one bed house two a luxury two bedroom home, no expense spared. This includes redecoration throughout, new kitchen & bathroom, creation of a utility room and downstairs WC as well as additional off road parking.

The property boasts two reception rooms, the lounge benefiting from bi-fold doors which open on to the very well presented wrap around garden with patio area, grass and decking space with pergola.

The kitchen is the focal point of the property, with island and breakfast bar, double oven and dishwasher.

Upstairs there are two well proportioned double bedrooms, the master benefiting from built in storage and finally family shower room.

Ready to move in to, please call to book your viewing today!

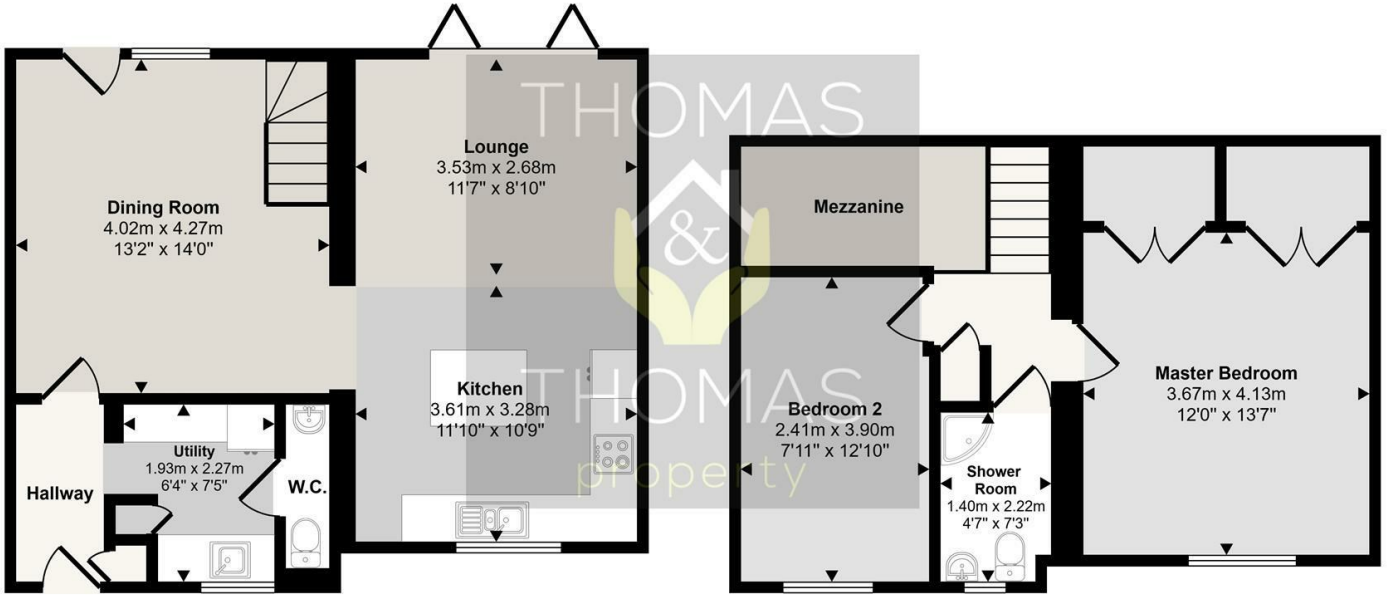
- **Extended Two Bedroom House**
  - **Off Road Parking**
  - **Two Reception Rooms**
  - **New Bathroom & Kitchen**
    - **Utility Room & WC**
    - **Ready to move in to**



PROTECTED

PROTECTED

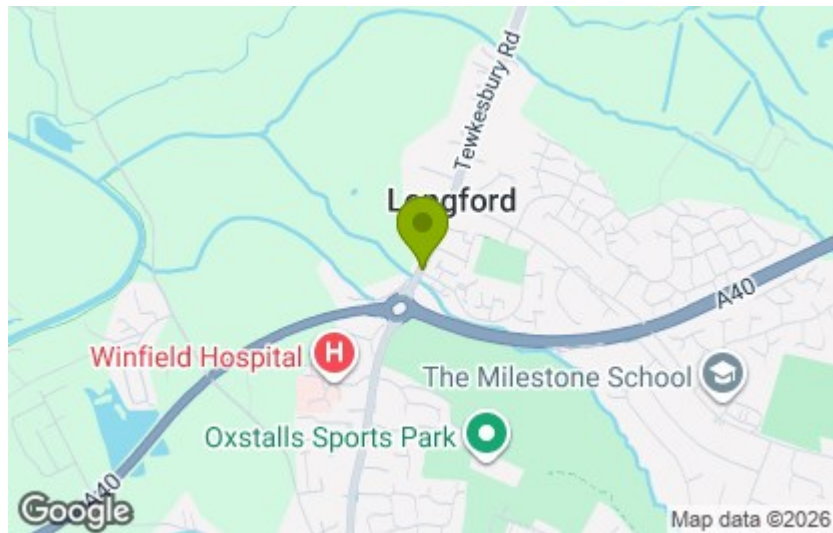
Approx Gross Internal Area  
89 sq m / 957 sq ft



This floorplan is only for illustrative purposes and is not to scale. Measurements of rooms, doors, windows, and any items are approximate and no responsibility is taken for any error, omission or mis-statement. Icons of items such as bathroom suites are representations only and may not look like the real items. Made with Made Snappy 360.

Energy Efficiency Rating		Current	Potential
Very energy efficient - lower running costs			
(92 plus) A			
(81-91) B			
(69-80) C			
(55-68) D			
(39-54) E			
(21-38) F			
(1-20) G			
Not energy efficient - higher running costs			
England & Wales		75	79
EU Directive 2002/91/EC			

Environmental Impact (CO <sub>2</sub> ) Rating		Current	Potential
Very environmentally friendly - lower CO <sub>2</sub> emissions			
(92 plus) A			
(81-91) B			
(69-80) C			
(55-68) D			
(39-54) E			
(21-38) F			
(1-20) G			
Not environmentally friendly - higher CO <sub>2</sub> emissions			
England & Wales			
EU Directive 2002/91/EC			



These particulars, whilst believed to be accurate are set out as a general outline only for guidance and do not constitute any part of an offer or contract. Intending purchasers should not rely on them as statements of representation of fact, but must satisfy themselves by inspection or otherwise as to their accuracy. No person in this firm's employment has the authority to make or give any representation or warranty in respect of the property.