



2 Monks Way, Peopleton

Offers in Region of **£540,000**

**SHELDON
BOSLEY
KNIGHT** LAND AND
PROPERTY
PROFESSIONALS



2 Monks Way

Peopleton, Pershore

Council Tax band: D

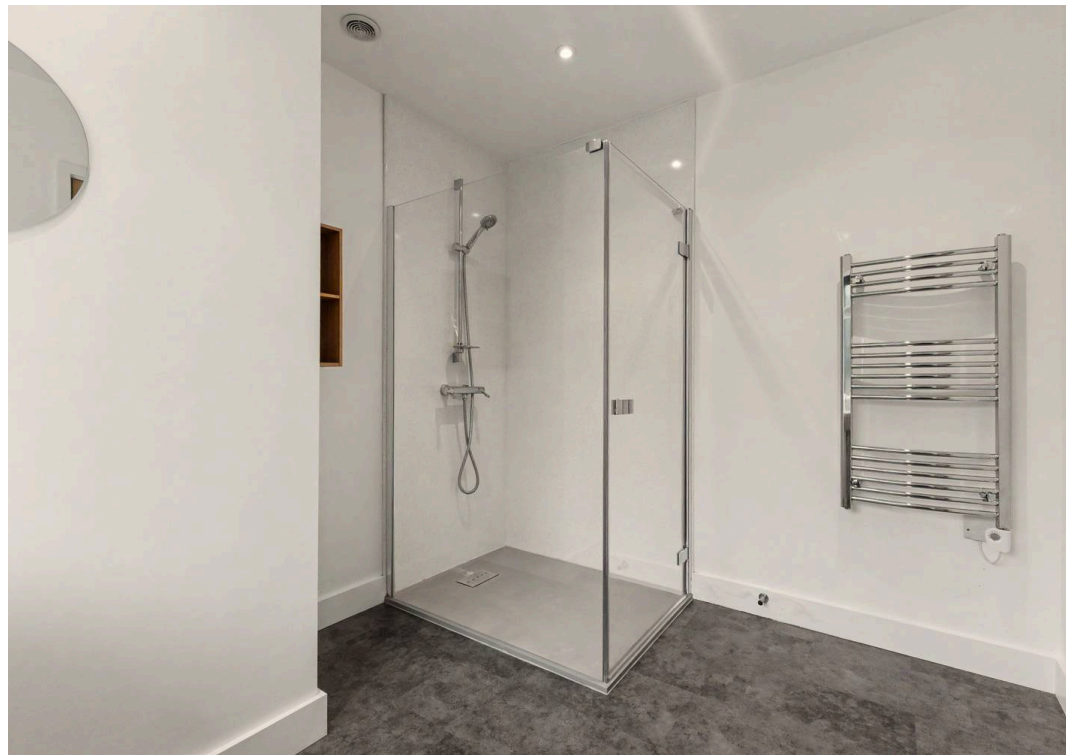
Tenure: Freehold

EPC Energy Efficiency Rating: E

EPC Environmental Impact Rating: E

- IMMACULATLY PRESENTED DETACHED BUNGALOW
- FULLY RENOVATED TO A HIGH STANDARD THROUGHOUT
- GENEROUS CORNER PLOT WITH WRAPAROUND GARDENS
- SPACIOUS LIVING AND DINING ROOM WITH PATIO DOORS
- MODERN FITTED KITCHEN WITH SEPARATE UTILITY ROOM
- TWO DOUBLE BEDROOMS WITH BUILT-IN STORAGE
- TWO BEDROOMS WITH EN-SUITE SHOWER ROOMS
- DETACHED DOUBLE GARAGE AND AMPLE DRIVEWAY PARKING
- SOUGHT-AFTER VILLAGE LOCATION WITH EXCELLENT TRANSPORT LINKS

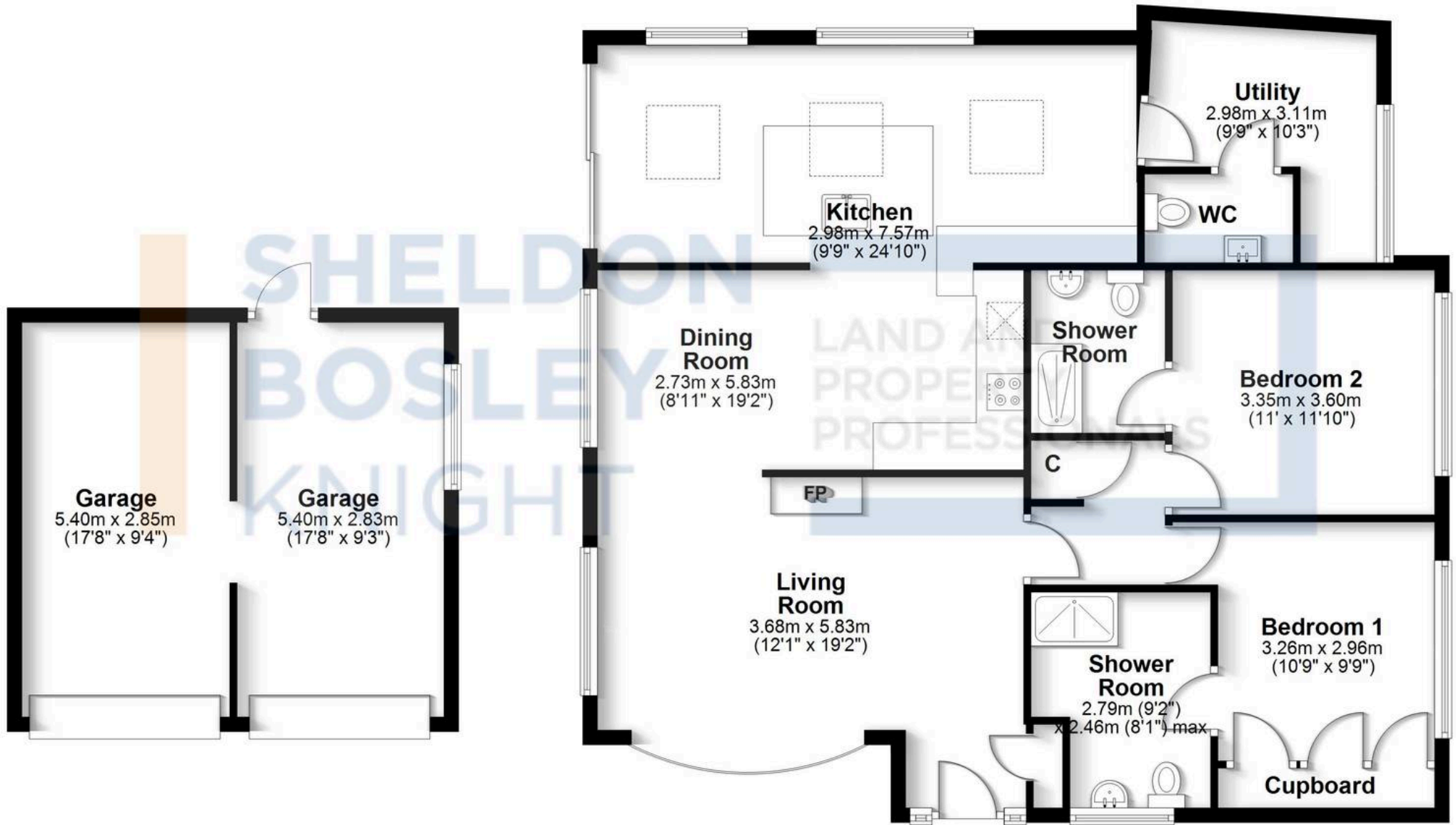






Ground Floor

Approx. 142.3 sq. metres (1531.7 sq. feet)



Total area: approx. 142.3 sq. metres (1531.7 sq. feet)

All efforts have been made to ensure the measurements are accurate on this floor plan, however these are for guidance purposes only.
Plan produced using PlanUp.