

Paul Mason Associates



43 Engineers Close, Latchingdon, Chelmsford, CM3 6YN  
Prices from £500,000

- Exclusive Development in Latchingdon
- Close to Countryside
- Four Bedroom Detached House
- Open Plan Kitchen/Dining Room
- 10'9" x 16'6" Lounge with French Doors to Rear Garden
- Family Bathroom, Downstairs Cloakroom and En-Suite to Master Bedroom
- Secluded Rear Garden
- Off Road Parking and Garage
- Excellent Transport Links Nearby
- EPC - TBC

Energy Efficiency Rating		Current	Potential
Very energy efficient - lower running costs			
(92 plus)	A		
(81-91)	B		
(69-80)	C		
(55-68)	D		
(39-54)	E		
(21-38)	F		
(1-20)	G		
Not energy efficient - higher running costs			
England & Wales		EU Directive 2002/91/EC	

Environmental Impact (CO <sub>2</sub> ) Rating		Current	Potential
Very environmentally friendly - lower CO <sub>2</sub> emissions			
(92 plus)	A		
(81-91)	B		
(69-80)	C		
(55-68)	D		
(39-54)	E		
(21-38)	F		
(1-20)	G		
Not environmentally friendly - higher CO <sub>2</sub> emissions			
England & Wales		EU Directive 2002/91/EC	

OPEN HOUSE - SATURDAY 23rd MAY - BY APPOINTMENT ONLY - PLEASE CALL TO BOOK YOUR VIEWING.

Introducing Sunmead, an exclusive collection of just 25 beautifully crafted new homes, perfectly positioned just off Burnham Road in the charming village of Latchingdon, Chelmsford. Nestled close to the breath taking Essex countryside, this thoughtfully designed development blends modern living with the area's traditional architectural style.

Sunmead offers a range of high-quality homes, including 3 and 4 bedroom houses, as well a 3 bedroom bungalow – all built to exceptional standards with flooring fitted throughout. Each property benefits from its own private garden, dedicated parking, and power provided for future installation of EV charging.

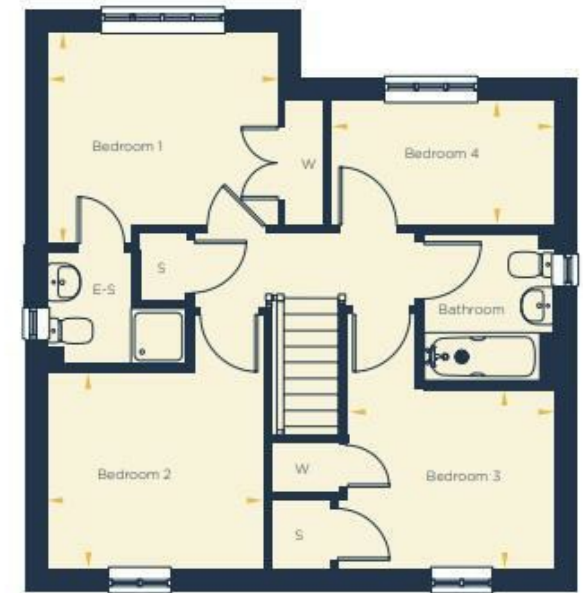
Whether you're looking for a peaceful countryside retreat or a stylish family home, Sunmead delivers comfort, style, and convenience in an idyllic setting.

VIEWINGS ARE BY APPOINTMENT ONLY – contact us today to book your viewing!



Ground floor

\*Mirrored version of plan shown.



First floor

### Location...

The village is located in the Dengie Peninsular with the closest towns, Maldon, Burnham-On-Crouch and South Woodham Ferrers all being within 7 miles away and Chelmsford approximately 14 miles. The village itself homes less than 1200 residents according to the 2021 census and benefits from a number of amenities including a 24 hour petrol garage, shops, post office, public house, primary school, diner and motel, bowls club, playing field and a village hall and church which both hold events.

### Distances

Latchingdon Primary School - 0.5 miles  
Althorne Railway Station - 2.6 miles  
Maldon - 6.6 miles  
Southend (London) Airport - 19.7 miles

(All mileages are approx)

## ACCOMMODATION

### GROUND FLOOR

#### Entrance Hallway

#### Study

1.99m x 2.78m (6'6" x 9'1")

#### Lounge

3.27m x 5.03m (10'8" x 16'6")

#### Cloakroom

#### Kitchen/Dining Room

3.73m x 5.69m (12'2" x 18'8")

### FIRST FLOOR

#### Landing

#### Bedroom One

3.40m x 3.13m (11'1" x 10'3")

#### En-Suite

#### Bedroom Two

3.27m x 2.90m (10'8" x 9'6")

#### Bedroom Three

3.04m x 2.65m (9'11" x 8'8")

#### Bedroom Four

3.29m x 1.84m (10'9" x 6'0")

#### Family Bathroom

### EXTERIOR

#### Turfed Rear Garden

#### Off Road Parking

#### Garage

### Property Services

Gas - N/A

Electric - Mains

Water - Mains

Drainage - Mains

Heating - Air Source Heat Pump

Local Authority - Maldon

### Important Notices

We wish to inform all prospective purchasers that we have prepared these particulars including text, photographs and measurements as a general guide. Room sizes should not be relied upon for carpets and furnishings. We have not carried out a survey or tested the services, appliances and specific fittings. These particulars do not form part of a contract and must not be relied upon as statement or representation of fact.

### Viewings

Strictly by appointment only through the selling agent Paul Mason Associates 01245 382555.



Paul Mason Associates

35 The Street  
Latchingdon  
Chelmsford  
Essex  
CM3 6JP  
T: 01621 742 310

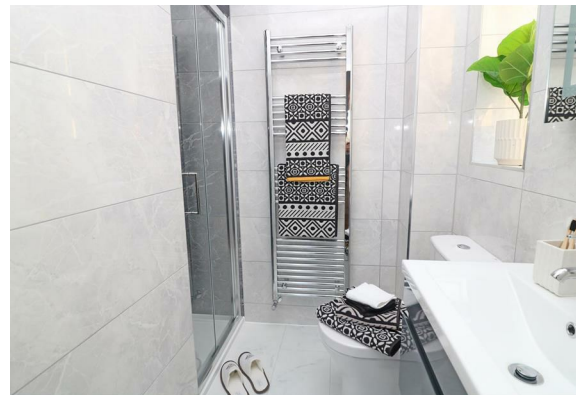
Bruce House  
17 The Street  
Hatfield Peverel  
Chelmsford  
CM3 2DP  
T: 01245 382 555

Sales | Lettings | Development | Investment

F: 01245 381257 E: [info@paulmasonassociates.co.uk](mailto:info@paulmasonassociates.co.uk) [www.paulmasonassociates.co.uk](http://www.paulmasonassociates.co.uk)

Paul Mason Associates Limited Registered in England Number - 6767946  
Registered Office - Bruce House, The Street, Hatfield Peverel CM3 2DP





**Paul Mason** Associates

35 The Street  
Latchingdon  
Chelmsford  
Essex  
CM3 6JP

T: 01621 742 310

Bruce House  
17 The Street  
Hatfield Peverel  
Chelmsford  
CM3 2DP

T: 01245 382 555

Sales | Lettings | Development | Investment

F: 01245 381257 E: info@paulmasonassociates.co.uk www.paulmasonassociates.co.uk

Paul Mason Associates Limited Registered in England Number - 6767946  
Registered Office - Bruce House, The Street, Hatfield Peverel CM3 2DP

