

Towers Wills

Town & Country

📞 01935 577 032 | 01460 298 530 | ✉ info@towerswills.co.uk



2 Church View, Kingsbury Episcopi, Martock, Somerset TA12 6AU

£260,000

Situated in the heart of the sought-after Somerset village of Kingsbury Episcopi, this delightful three bedroom character cottage offers a wonderful blend of period charm and modern comfort. The property features a spacious kitchen/breakfast room and a dual-aspect lounge/diner with a cosy wood-burning stove. Cloakroom/ W.C Upstairs are three double bedrooms and a well-appointed bathroom, enjoying far-reaching views toward the village church. Outside, the mature cottage garden offers a peaceful retreat with beautiful countryside views.

Kitchen/Breakfast Room:

Accessed via the front door, this welcoming space features an extensive range of wall, base, and drawer units, complemented by work surfaces with an inset sink and drainer. Tiling to splash-prone areas adds practicality, while there is ample space for a cooker and fridge/freezer. Windows and a door to the front ensure the room is bathed in natural light.

Lounge/Diner:

A spacious, dual-aspect open-plan living area boasting a cosy wood-burning stove, perfect for relaxing evenings. A window to the rear offers views of the garden, and a staircase leads to the first floor.

Cloakroom/ W.C

First Floor:

Bedroom One:

A comfortable double bedroom with a window to the rear, providing a pleasant outlook.

Bedroom Three:

Another well-proportioned bedroom, with front-facing window.

Shower Room:

Fitted with a modern suite, offering contemporary fixtures and fittings for convenience.

Second Floor:

Bedroom One:

A double bedroom with far-reaching views towards the village church and built-in storage.

Garden:

A path leads from the front of the property to the main garden area, which is generously sized and thoughtfully landscaped. The garden is predominantly laid to shaped lawns, interspersed with planted shrub and flower borders, creating a tranquil outdoor haven. A timber-built summer house provides a charming spot to enjoy the surroundings.

Location:

Kingsbury Episcopi is a quintessential Somerset village, steeped in history and community spirit. The village boasts the impressive Church of St Martin, featuring a 99-foot Somerset Tower constructed from local Ham Hill stone. Kingsbury Episcopi is also home to the annual May Festival and the Lowland Games, both of which attract visitors from across the region.

For nature enthusiasts, the nearby River Parrett Trail offers scenic walking routes through the Somerset Levels. The village provides essential amenities, including a local pub, community shop, and primary school, while the nearby towns of Martock and Langport offer additional services and transport links

Key Features

- Sought-after Village Location
- Terraced Cottage
- Three bedrooms
- Far Reaching Countryside Views
- Mature Garden

Contact Us

Towers Wills Estate Agents - Yeovil

114, Hendford Hill
Yeovil

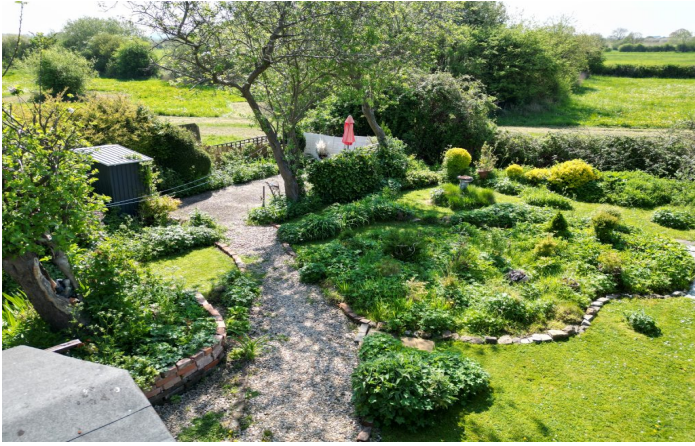
Somerset
BA202RF

T: 01935 577032

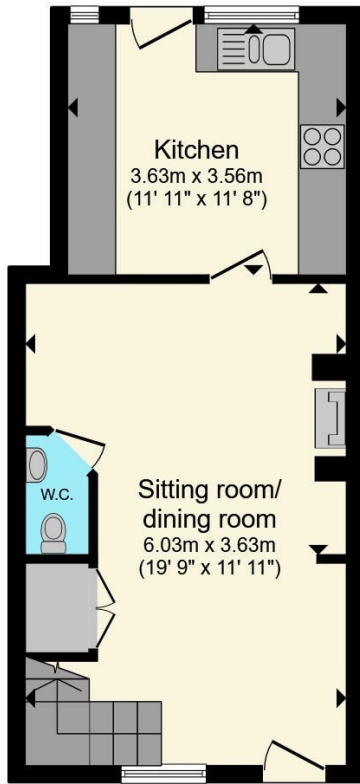
E: info@towerswills.co.uk

Energy Efficiency

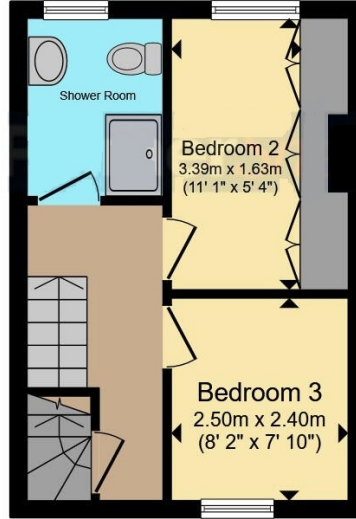
Score	Energy rating	Current	Potential
92+	A		
81-91	B		90 B
69-80	C		
55-68	D		
39-54	E	47 E	
21-38	F		
1-20	G		



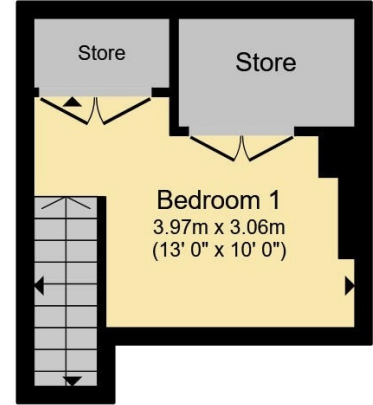
Floor Plan



Ground Floor



First Floor



Second Floor

Total floor area 75.6 m² (814 sq.ft.) approx

This floor plan is for illustrative purposes only. It is not drawn to scale. Any measurements, floor areas (including any total floor area), openings and orientation are approximate. No details are guaranteed, they cannot be relied upon for any purpose and they do not form part of any agreement. No liability is taken for any error, omission or misstatement. A party must rely upon its own inspection(s). Powered by www.focalagent.com

Please Note No tests have been undertaken of any of the services and any intending purchasers should satisfy themselves in this regard. Towers Wills Ltd for themselves and for the vendor of this property whose agents they are, give notice that, (i) these particulars do not constitute any part of an offer or contract, (ii) all statements contained within these particulars are made without responsibility on the part of Towers Wills or the vendor, (iii) whilst made in good faith, none of the statements contained within these particulars are to be relied upon as a statement of representation or fact, (iv) any intending purchaser must satisfy him/herself by inspection or otherwise as to the correctness of each of the statements contained within these particulars, (v) the vendor does not make or give either Towers Wills or any person in their employment any authority to make or give representation or warranty whatsoever in relation to this property.

Photographs / Floor Plans Photographs are reproduced for general information and it must not be inferred that any item is included for sale with this property. Please note floor plans are not to scale and are for identification purposes only. The photographs used in these particulars may have been taken with the use of a wide angle lens. If you have any queries as to the size of the accommodation or plot, please address these with the agent prior to making an appointment to view

Towers Wills

The White House, 114 Hendford Hill, Yeovil BA20 2RF

Yeovil 01935 577032 / South Petherton 01460 298530

info@towerswills.co.uk | www.towerswills.co.uk