

## Inney Close, Callington, PL17

Guide Price £150,000

2 1 1



A fantastic opportunity to purchase a two-bedroom terraced property, currently being modernised by the owner. The property will feature a stylish, contemporary interior with off-road parking, a low-maintenance patio garden, and no onward chain.

Callington is a charming Cornish town located within a prime location in South East Cornwall and just 15 miles from Plymouth City Centre. The Town benefits from a range of facilities including a health centre, sports centre/gym, supermarkets, church and both primary and secondary schools. The area provides some idyllic countryside walks with Cotehele estate and house, Kit Hill and the Tamar Valley all nearby making it an ideal place for families and individuals alike.

## Key Features

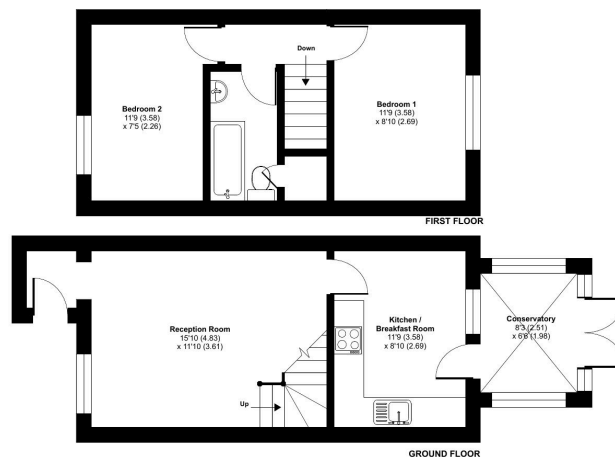
- TO ARRANGE A VIEWING PLEASE QUOTE BL0650
- Two Double Bedrooms
- Off-Road Parking
- Low-Maintenance Patio Garden
- Popular Residential Area
- Terraced Property
- No Onward Chain
- Contemporary Finish Throughout
- Ideal First Time Buy Or Investment Purchase
- Freehold

### Inney Close, Callington, PL17

Approximate Area = 671 sq ft / 62.3 sq m

For identification only - Not to scale

Denotes restricted head height



Floor plan produced in accordance with RICS Property Measurement Standards incorporating International Property Measurement Standards (IPMS2 Residential). © nichecom 2026. Produced for eXp Agent (DD). REF: 1442059