



21 Willowmere, East Road, Middlewich, Cheshire, CW10 9PY
£140,000

An exceptionally spacious and beautifully appointed first-floor apartment, set within the prestigious Willowmere Village development, exclusively for the over-55s and conveniently located close to the lift. This elegant home offers a welcoming and generously proportioned entrance hall with excellent storage, leading to a bright and stylish lounge/dining area complete with a charming balcony. Separate kitchen, two well-sized double bedrooms, including a superb principal suite with ensuite, alongside a contemporary separate shower room. Residents enjoy access to outstanding communal facilities, complemented by the reassurance of a professional team on hand 24 hours a day, ensuring both comfort and security at all times. A truly impressive apartment offering refined, low-maintenance living. Early viewing is highly recommended.

Accommodation

ENTRANCE HALL

Accessed via the entrance door, wall heater, storage heaters and doors to the lounge, kitchen, bedrooms and shower room.

LOUNGE/DINER 14' 4" x 18' 2" (4.37m x 5.54m)

A spacious lounge diner, with a double glazed window to the front elevation and a door that leads to the balcony, wall mounted heater.

KITCHEN 9' x 8' 8" (2.74m x 2.64m)

With a window. Fitted with a range of base and wall units with worksurface over incorporating a sink unit and tap. Integrated oven and hob, space and plumbing for washing machine, dishwasher and dryer, space for fridge freezer.

BEDROOM ONE 10' 2" x 16' 3" (3.1m x 4.95m)

With a double glazed window to the front elevation, wall mounted heater and a door leads to the en-suite.

EN-SUITE

A wet room fitted with a low level WC, hand wash basin and shower, wall mounted heater.

BEDROOM TWO 12' 4" x 7' 1" (3.76m x 2.16m)

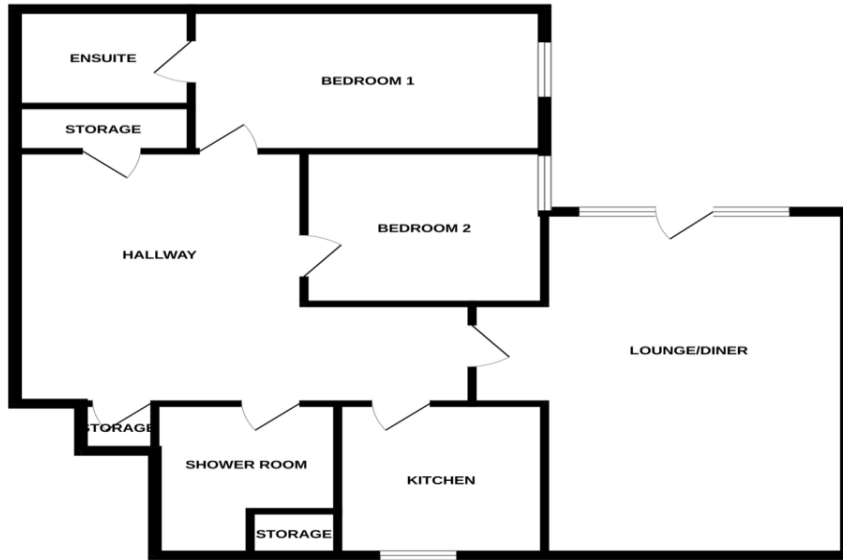
With a double glazed window to the front elevation and wall mounted heater.

SHOWER ROOM

Fitted with a low level WC, hand wash basin and shower cubicle and shower, cupboard providing storage.



GROUND FLOOR



Whilst every attempt has been made to ensure the accuracy of the floorplan contained here, measurements of doors, windows, rooms and any other items are approximate and no responsibility is taken for any error, omission or mis-statement. This plan is for illustrative purposes only and should be dated as such by any prospective purchaser. The services, systems and appliances shown have not been tested and no guarantee as to their operability or efficiency can be given.
Made with Metropix ©2026

Please note that we have not tested any apparatus, equipment, fixtures, fittings or services, and so cannot verify they are in working order or fit for their purpose.

Whilst these particulars have been prepared in good faith and are believed to be correct, they are intended for the general guidance only of prospective Purchasers and should not be founded on under any circumstances. All measurements are approximate and the property is sold in its present state of repair.

Furthermore solicitors should confirm moveable items described in the sales particulars are, in fact, included in the sale since circumstances do change during marketing or negotiations. A final inspection prior to exchange of contracts is also recommended.

YOUR HOME IS AT RISK IF YOU DO NOT KEEP UP REPAYMENTS ON A MORTGAGE OR OTHER LOAN SECURED ON IT

Coulby Conduct Estate Agents make introductions for Financial Services business to Coulby Conduct financial services, regulated by the Financial Services Authority.