



Victoria Street, £90,000

- Sold with Tenant in Situ.
- Three Bedrooms.
- Two Reception Rooms.
- Ideal Investment Opportunity.
- Sought-after location.
- EPC Rating: C



 3
  1
  1



About the property

This neutrally decorated three-bedroom terraced house on Victoria Street, Maesteg, is a tenant-occupied investment opportunity offering two reception rooms, proximity to local amenities, schools, parks, and excellent transport links, including a nearby railway station with direct access to Cardiff.

- Sold with Tenant in Situ.
- Three Bedrooms.
- Two Reception Rooms.
- Ideal Investment Opportunity.
- Sought-after location.





Accommodation

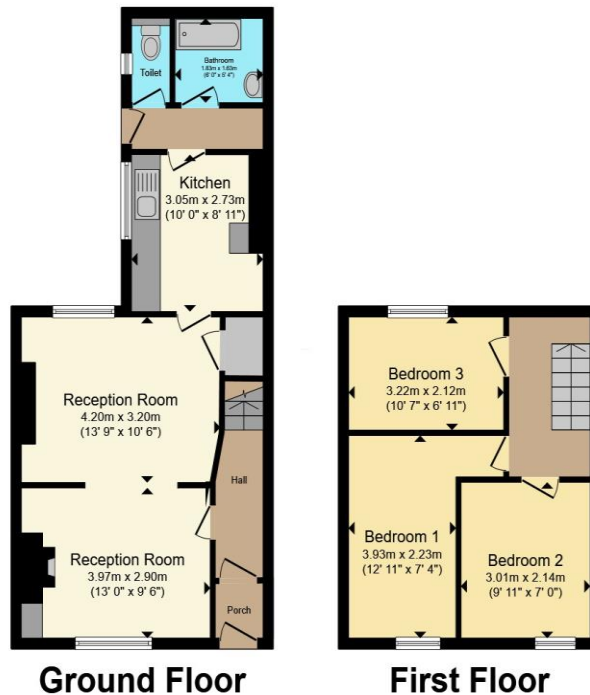
This neutrally decorated three-bedroom terraced house presents a valuable investment opportunity, sold with tenant in situ. Located on Victoria Street in Maesteg, the property benefits from a sought after location in an urban area close to a range of local amenities, schools, and green spaces.

The layout features two reception rooms: one separate room with large windows offering ample natural light, and an open-plan space overlooking the garden. The kitchen is enhanced by natural light, and the bathroom also benefits from natural lighting. Upstairs, the accommodation comprises a master double bedroom, a further double bedroom, and a single bedroom.

Maesteg offers convenient public transport options, with Maesteg railway station within walking distance. Regular train services connect to Cardiff Central, with journey times of approximately 50 minutes, and to Bridgend in under 20 minutes. Bus services also run regularly through the area, offering connectivity throughout the borough.

The property is situated close to local parks, including Maesteg Welfare Park, and benefits from nearby walking and cycling routes. The high street, with its shops, cafés, and other amenities, is within easy reach. Several primary and secondary schools are located in the vicinity, making this location convenient for families and commuters alike.

Floorplan



Total floor area 77.9 m² (839 sq.ft.) approx

This floor plan is for illustrative purposes only. It is not drawn to scale. Any measurements, floor areas (including any total floor area), openings and orientation are approximate. No details are guaranteed, they cannot be relied upon for any purpose and they do not form part of any agreement. No liability is taken for any error, omission or misstatement. A party must rely upon its own inspection(s). Powered by www.propertybox.io

Important Information

Note while we endeavour to make our sales details accurate and reliable, if there is any point which is of particular interest to you, please contact the office and we will be pleased to confirm the position for you. We have not personally tested any apparatus, equipment, fixtures, fittings or services and cannot verify they are in working order or fit for their purposes. Nothing in these particulars is intended to indicate that carpets or curtains, furnishings or fittings, electrical goods (whether wired or not). Gas fires or light fittings or any other fixtures not expressly included form part of the property offered for sale. This computer generated Floorplan, if applicable, is intended as a general guide to the layout and design of the property. It is not to scale and should not be relied upon for dimensions. Tenure: We cannot confirm the tenure of the property as we have not had access to the legal documents. The buyer is advised to obtain verification from their solicitor or surveyor.