

Bryanston Sqaure

Marylebone, W1H

Dexters



tsf





About the property

This beautifully refurbished and classically designed Georgian townhouse is arranged over three floors with almost 4,000 sq. ft of accommodation.

The house is Grade II Listed and, as to be expected with a house of this grandeur, has many original features including high ceilings, well-maintained sash windows and intricate cornicing. The property also has a garage to the rear.

The house has been exquisitely decorated with great care and attention to detail, creating a luxurious family home in one of London's premium addresses.

Bryanston Square is considered one of the capital's most desirable garden squares, offering residents exclusive access to private gardens in the heart of central London.



Key features

Georgian Townhouse
Grade II Listed
Two Reception Rooms
Five Bedrooms
Secure Garage
Prestigious Garden Square











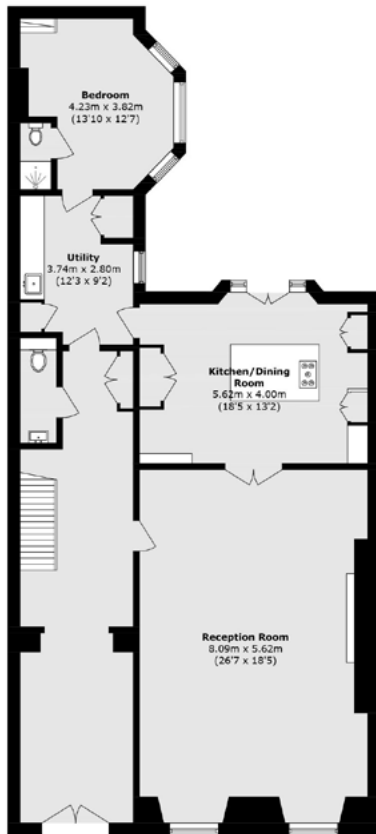




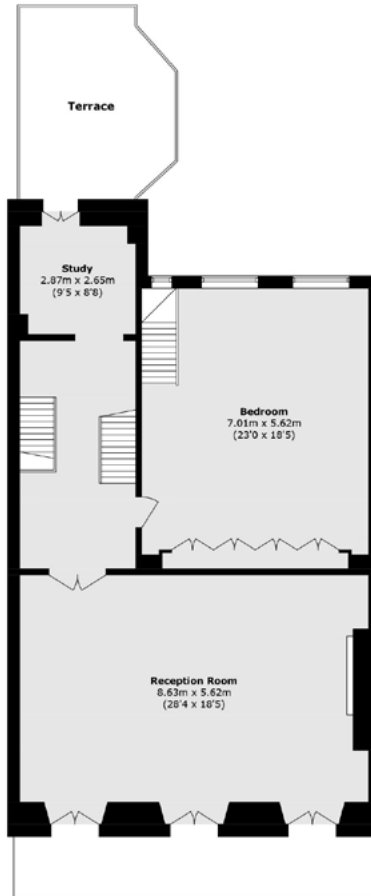
Basement



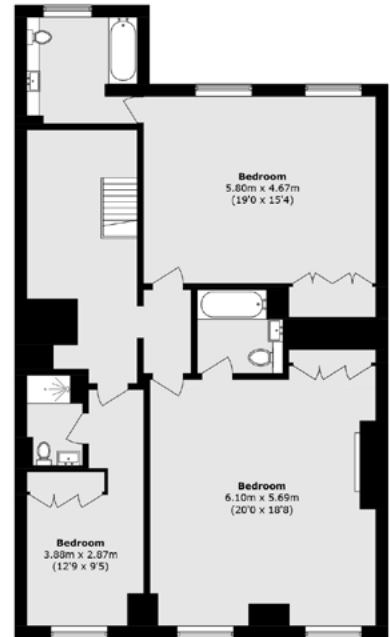
Second Floor



Ground Floor



First Floor



Third Floor

TOTAL APPROX. FLOOR AREA 3941.7 SQ. FT (366.2 SQ. M)
TERRACE AREA APPROX. 179.7 SQ. FT (16.7 SQ. M)

Energy Rating: C. We aim to make our particulars both accurate and reliable. However they are not guaranteed; nor do they form part of an offer or contract. If you require clarification on any points then please contact us, especially if you're traveling some distance to view. Please note that appliances and heating systems have not been tested and therefore no warranties can be given as to their good working order.



Dexters Marylebone
55 Weymouth Street,
London, W1G 8NJ
020 7224 5545

Dexters