



## 3 Berkeley Drive, Wirral, CH45 1HN £1,250 PCM

 4  1  2  A

A semi detached property in a highly regarded residential area and comprising of four bedrooms, two reception rooms, kitchen, bathroom and rear garden with decked area. The property also benefits from gas central heating and double glazing. Viewing essential to fully appreciate all that is on offer!

- Four Bedrooms
- Semi Detached House
- Two Reception
- Kitchen
- Bathroom
- Rear Garden
- Decked Area
- Sought After Location
- EPC Rating TBC

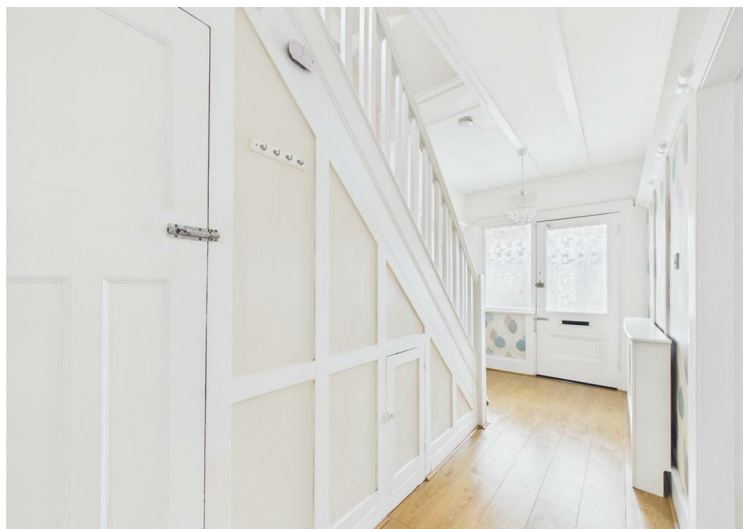


### Viewing

To arrange a viewing on this property or require further information please contact one of our team on 0151 638 6313



Energy Efficiency Rating		
	Current	Potential
Very energy efficient - lower running costs (92 plus) <b>A</b>	<b>99</b>	<b>99</b>
(81-91) <b>B</b>		
(69-80) <b>C</b>		
(55-68) <b>D</b>		
(39-54) <b>E</b>		
(21-38) <b>F</b>		
(1-20) <b>G</b>		
Not energy efficient - higher running costs		
<b>England &amp; Wales</b>	EU Directive 2002/91/EC	



These particulars, whilst believed to be accurate are set out as a general outline only for guidance and do not constitute any part of an offer or contract. Intending purchasers should not rely on them as statements of representation of fact, but must satisfy themselves by inspection or otherwise as to their accuracy. No person in this firm's employment has the authority to make or give any representation or warranty in respect of the property.