



SAXON SHORE
— ESTATE AGENTS —



42 Willement Road, Faversham, ME13 7SZ Offers in excess of £395,000

Introducing this well presented, three bedroom, semi-detached house in a popular cul-de-sac, located close to the Davington cricket pitch and local amenities, and a short walk away from Faversham town centre. Bought to market with no onward chain.

Accommodation spans across two floors and comprises an entrance hall, a spacious lounge/dining room with front to back windows, a working fireplace doors that open onto the garden and a modern kitchen to the ground floor.

Upstairs on the first floor are two double bedrooms, a good sized single bedrooms, a shower room and a W/C.

Outside to the front is a patio garden, a driveway and a garage providing ample off street parking. To the rear is a generous, corner plot garden mainly laid to lawn with patio areas.

Don't miss your chance to make this house, your new home. Contact us to arrange a viewing!

Porch

Entrance Hall



Bedroom 1
11'0" x 12'7" (3.37 x 3.86)

Lounge

11'0" x 13'1" (3.37 x 4.01)



Bedroom 2
10'1" x 11'6" (3.08 x 3.52)

Dining Room

8'10" x 11'0" (2.7 x 3.36)



Bedroom 3
6'6" x 9'1" (2 x 2.77)

Kitchen

8'9" x 11'0" (2.67 x 3.36)



Landing



Shower Room
7'5" x 4'6" (2.28 x 1.39)



WC

4'11" x 2'7" (1.51 x 0.79)



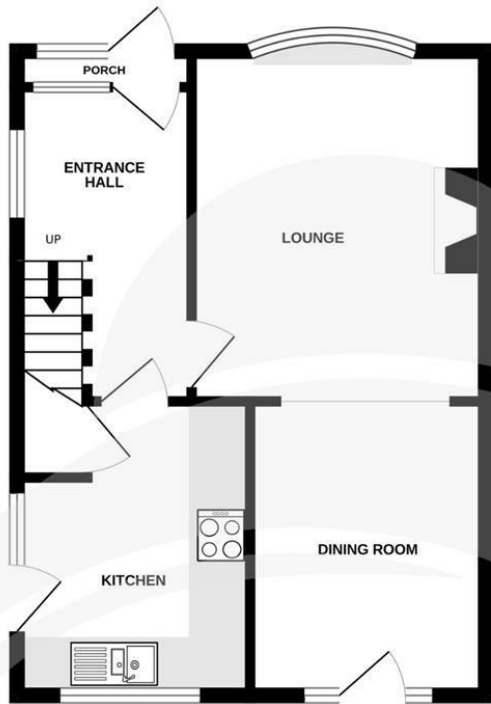
Garden



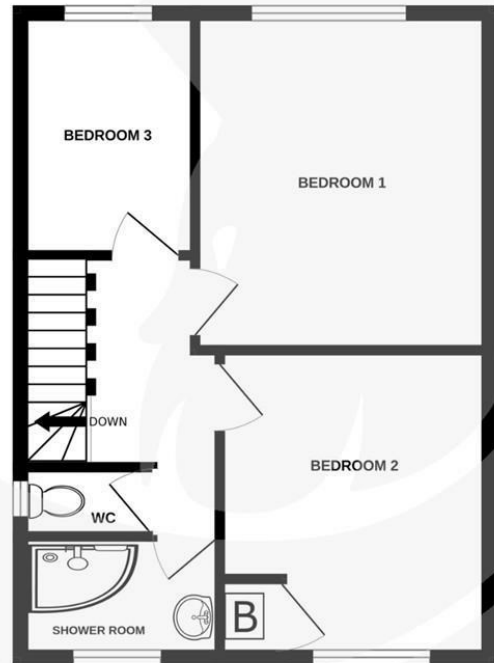
Garage

19'3" x 13'5" (5.87 x 4.11)

GROUND FLOOR
39.2 sq.m. (422 sq.ft.) approx.



1ST FLOOR
39.6 sq.m. (426 sq.ft.) approx.



TOTAL FLOOR AREA : 78.7 sq.m. (847 sq.ft.) approx.

Whilst every attempt has been made to ensure the accuracy of the floorplan contained here, measurements of doors, windows, rooms and any other items are approximate and no responsibility is taken for any error, omission or mis-statement. This plan is for illustrative purposes only and should be used as such by any prospective purchaser. The services, systems and appliances shown have not been tested and no guarantee as to their operability or efficiency can be given.
Made with Metropix ©2025

