



Denmark Place, London, E3

BUTLER & STAG



Guide Price £375,000 - £400,000
Set within the Fairfield Road Conservation area and positioned at the end of a cobbled east-end street is this first-floor, dual aspect, two-bedroom apartment.



Leasehold

- First Floor apartment
- South Facing Balcony
- Modern Interiors
- Chain Free
- Two Bedrooms
- Resident Only Gardens To Enjoy
- Separate Kitchen
- Bow Church DLR and Bow Road Tube Station A Moments Walk Away

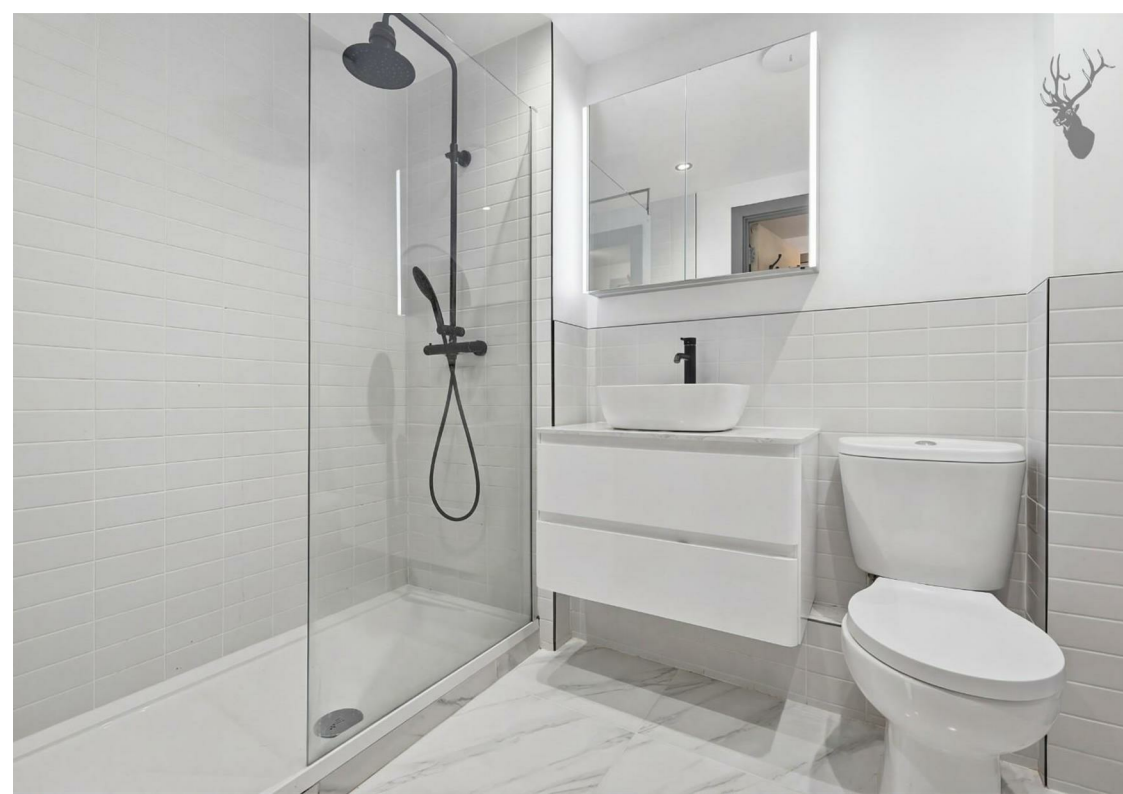
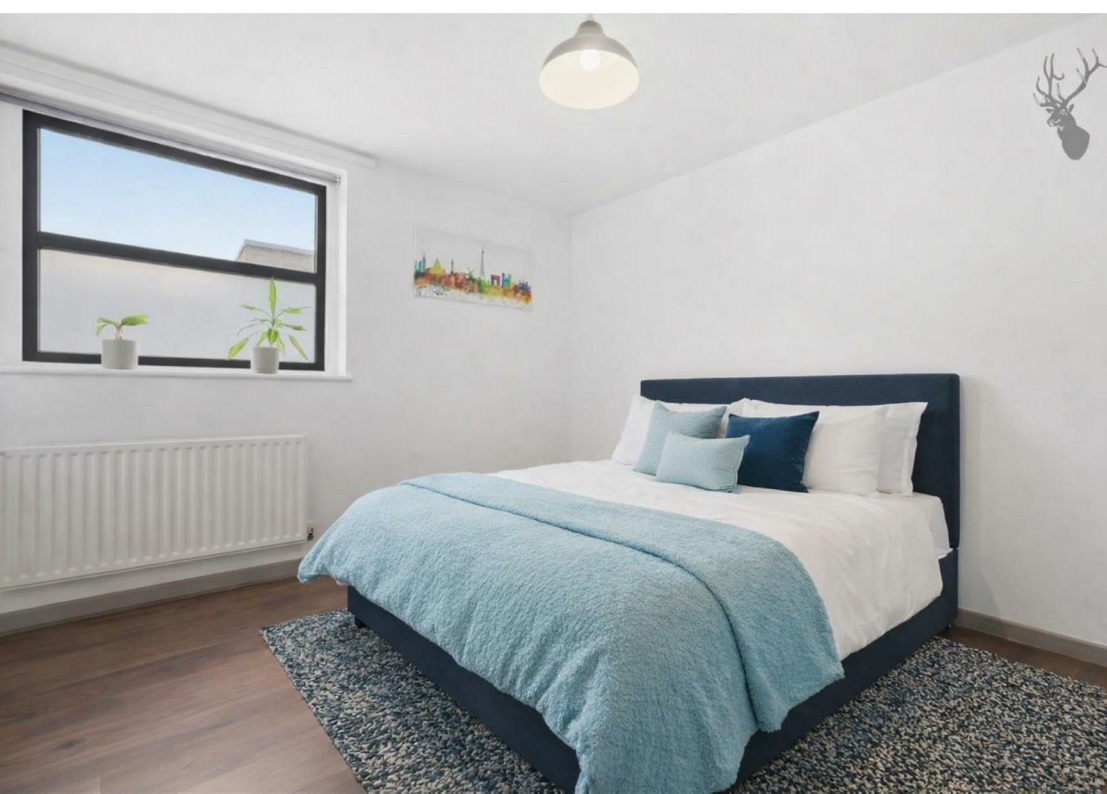
Situated on the first floor the property boasts modern interiors and has a south facing balcony.

Inside, the apartment comprises a spacious living room, a separate fully fitted kitchen, two well-proportioned bedrooms, and a modern bathroom. The separate kitchen provides practical cooking space with space for a separate dining table.

Both bedrooms offer good natural light and flexibility for use as sleeping accommodation, a home office, or guest room.

The development is enviably located in the heart of Bow having both Bow Road Underground, Bow Church DLR on its door step. Victoria Park, Westfield Shopping Centre and The Queen Elizabeth Olympic Park are all within easy reach.

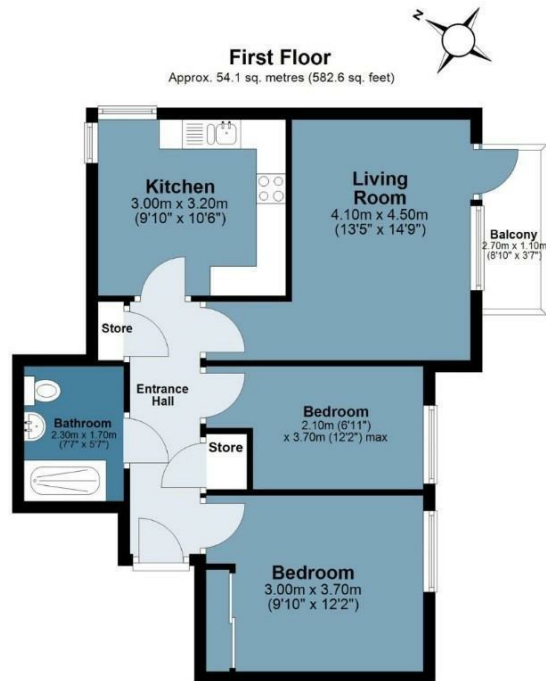




Denmark Place

Approx. Gross Internal Area 54.1 sq. metres (582.6 sq. feet)

BUTLER & STAG



Measurements are approximate and for illustration purposes only. While we do not doubt the accuracy and completeness, we advise you conduct a careful independent assessment of the property to determine monetary value
© @modephotouk www.modephotouk.co.uk

BUTLER & STAG

☎ 020 8102 1236

🏠 508 Roman Road, Bow, London, E3 5LU

✉ bow@butlerandstag.com

www.butlerandstag.uk

IMPORTANT NOTICE - These particulars have been prepared in good faith and they are not intended to constitute part of an offer or contract. We have not performed a structural survey on this property and the services, appliances and specific fittings have not been tested. All photographs, measurements, floor plans and distances referred to are given as a guide and should not be relied upon.