



Cadogan Road, Bury St. Edmunds, IP33 3QJ

welcome to

Cadogan Road, Bury St. Edmunds

William H Brown are pleased to showcase this versatile, extended, detached bungalow with an annex opportunity to suite a variety of choices and needs. Situated close to local amenities and a short drive to Bury St Edmunds medieval town centre, viewings are highly recommended to save disappointment!

Bury St Edmunds

Bury St. Edmunds, located in the county of Suffolk, England, is a historic market town renowned for its rich heritage and picturesque surroundings. The town is steeped in history, dating back to the medieval period, and is named after Saint Edmund, the king of East Anglia.

Bury St. Edmunds is known for its stunning architecture, including the impressive St. Edmunds Cathedral and the striking Abbey Gardens, which stand as a testament to the town's historical significance. The town centre is a charming mix of ancient and modern, with a vibrant market, boutique shops, cafes, and restaurants catering to locals and visitors alike.

In addition to its historical and architectural attractions, Bury St. Edmunds offers a range of cultural activities, including theatres, art galleries, and museums, providing residents and tourists with a diverse array of entertainment options. The town also hosts various events and festivals throughout the year, adding to its vibrant atmosphere.

With its beautiful parks, green spaces, and proximity to the Suffolk countryside, Bury St. Edmunds appeals to nature lovers and outdoor enthusiasts. The town's location provides easy access to the surrounding natural beauty, making it an ideal base for exploring the picturesque landscapes of Suffolk.

Overall, Bury St. Edmunds is a charming town that seamlessly blends history, culture, and natural beauty, making it a delightful place to visit or call home. Its unique charm and vibrant atmosphere continue to attract visitors from near and far, showcasing the best of what Suffolk has to offer.

Entrance Hall

Plastered ceiling, fitted light, external double glazed door to front, internal doors to bedroom one and two, radiator, sockets and laminate flooring, leads to inner hall.

Inner Hall

Plastered ceiling, fitted light, doors to lounge, kitchen and shower room, laminate flooring.

Lounge / Diner

Open plan separated by arch, plastered ceiling, fitted light, external double glazed door to rear, two double glazed windows to rear aspect and double glazed window to side aspect, two radiators, sockets, TV point and laminate flooring.

Kitchen / Breakfast Room

Plastered ceiling, spot lights, door to conservatory, two double glazed window to front aspect, wall and base units, work surface, integrated double oven, induction hob with extractor fan over, sink/drain, space for multiple appliances, radiator, sockets and vinyl flooring.

Conservatory

External double glazed door to side, double glazed window to full front, side and rear aspect, sockets and vinyl flooring.

Shower Room

Plastered ceiling, fitted light, double glazed frosted window to front aspect, walk-in shower unit with double shower attachment and sliding door, fitted WC and wash-hand basin, vinyl flooring.





Bedroom One

Plastered ceiling, fitted light, double glazed window to rear aspect, two fitted storage cupboard and wardrobe, radiator, sockets and laminate flooring.

Bedroom Two

Plastered ceiling, fitted light, loft access with ladder and light, double glazed window to front aspect, door to "annex" inner hall, airing cupboard, radiator, sockets and laminate flooring.

"annex" Inner Hall

Plastered ceiling, fitted light, doors to utility room/"annex" kitchen, shower room two, bedroom three and garden room, sockets and laminate flooring.

Kitchen / Utility

Plastered ceiling, fitted light, external double glazed door to front, double glazed window to front aspect, wall and base units, work surfaces, heated towel rail, sockets and vinyl flooring.

Shower Room Two

Plastered ceiling, fitted light, double glazed frosted window to side aspect, walk-in shower unit with sliding door, fitted WC and wash-hand basin, heated towel rail, vinyl flooring.

Bedroom Three / Study

Plastered ceiling, fitted light, double glazed window to side aspect, radiator, sockets and laminate flooring.

Garden Room

Plastered ceiling, fitted light, two double glazed velux windows, external double glazed door to side, double glazed window to side and rear aspect, radiator, sockets, TV point and laminate flooring.

Front Garden

Driveway with ample parking space leading to front door, side / "annex" door and gated side access.

Rear Garden

South/east facing, private and enclosed, mainly laid to lawn with variety of bushes and shrubs, wooden shed, outside sockets, pathway leading to side wrap around garden made up of laid to lawn and patio with a variety of bushes and shrubs, private and enclosed, gated side access lead to front garden.



view this property online williamhbrown.co.uk/Property/BGS110583



welcome to

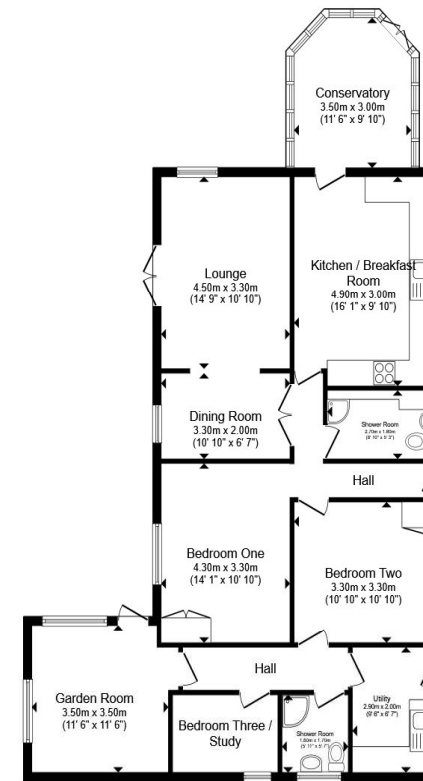
Cadogan Road, Bury St. Edmunds

- Extended, Versatile Detached Bungalow
- Annex Opportunity
- Spacious Accommodation Throughout
- Three Bedrooms & Two Shower Rooms
- Ample Parking Driveway

Tenure: Freehold EPC Rating: C

Council Tax Band: D

£440,000



Total floor area 118.3 m² (1,273 sq.ft.) approx

This floor plan is for illustrative purposes only. It is not drawn to scale. Any measurements, floor areas (including any total floor area), openings and orientation are approximate. No details are guaranteed, they cannot be relied upon for any purpose and they do not form part of any agreement. No liability is taken for any error, omission or misstatement. A party must rely upon its own inspection(s). Powered by www.propertybox.io



view this property online williamhbrown.co.uk/Property/BGS110583



Property Ref:
BGS110583 - 0003

1. MONEY LAUNDERING REGULATIONS Intending purchasers will be asked to produce identification documentation at a later stage and we would ask for your co-operation in order that there is no delay in agreeing the sale. 2. These particulars do not constitute part or all of an offer or contract. 3. The measurements indicated are supplied for guidance only and as such must be considered incorrect. Potential buyers are advised to recheck measurements before committing to any expense. 4. We have not tested any apparatus, equipment, fixtures or services and it is in the buyers interest to check the working condition of any appliances. 5. Where an EPC, or a Home Report (Scotland only) is held for this property, it is available for inspection at the branch by appointment. If you require a printed version of a Home Report, you will need to pay a reasonable production charge reflecting printing and other costs. 6. We are not able to offer an opinion either written or verbal on the content of these reports and this must be obtained from your legal representative. 7. Whilst we take care in preparing these reports, a buyer should ensure that his/her legal representative confirms as soon as possible all matters relating to title including the extent and boundaries of the property and other important matters before exchange of contracts.

William H Brown is a trading name of Sequence (UK) Limited which is registered in England and Wales under company number 4268443. Registered Office is Cumbria House, 16-20 Hockliffe Street, Leighton Buzzard, Bedfordshire, LU7 1GN. VAT Registration Number is 500 2481 05.



01284 762 131



BuryStEdmunds@williamhbrown.co.uk



12 The Traverse, BURY ST. EDMUNDS, Suffolk,
IP33 1BJ



williamhbrown.co.uk