

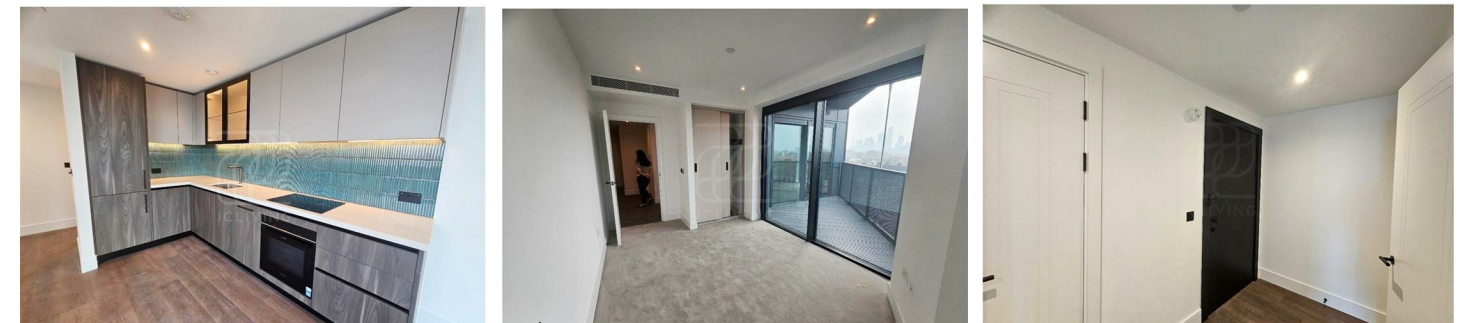
Directions

Viewings

Viewings by arrangement only. Call 02033696888 to make an appointment.

EPC Rating

| Energy Efficiency Rating | | Current | Potential |
|---|--|-------------------------|--|
| Very energy efficient - lower running costs | | | |
| (92 plus) A | | | |
| (81-91) B | | | |
| (69-80) C | | | |
| (55-68) D | | | |
| (39-54) E | | | |
| (21-38) F | | | |
| (1-20) G | | | |
| Not energy efficient - higher running costs | | | |
| England & Wales | | EU Directive 2002/91/EC |  |



1 BEDROOM APARTMENTS

D.03.04, D.04.04, D.05.04, D.06.04, D.07.04

BROADWAY EAST



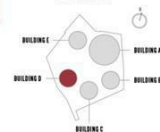
KEY

OW: Optional Wardrobe
W: Built In Wardrobe
ST: Storage
UC: Utility Cupboard

52.1sqm - (561.1sqft)

| | | |
|---------------|-----------------|----------------|
| Living/Dining | 3.820m x 3.000m | 12' 5" x 9' 9" |
| Kitchen | 1.950m x 3.430m | 6' 4" x 11' 3" |
| Bedroom | 4.510m x 2.935m | 14' 8" x 9' 7" |
| Balcony | 2.505m x 2.065m | 8' 3" x 6' 8" |

LOCATION



KEY PLAN



Floorplans shown for Broadway East, Bethnal Green are for approximate measurements only. Exact layouts and sizes may vary. All measurements may vary within a tolerance of 2% and are in the maximum room dimensions. The dimensions are not intended to be used for carpet sizes, appliance sizes or items of furniture. Furniture layouts are indicative only. Kitchen layout indicative only. Optional Wardrobes are at an additional cost and dependent on build stage. Please ask Sales Consultant for further information.

CN1271 Flat 704, 5 Marian Place, London, E2 9FT

£680 Per Week

5 Marian Place, London E2 9FT

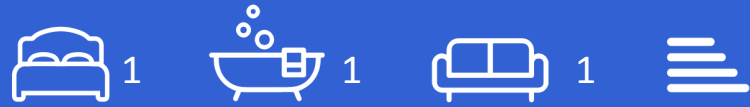
*** Please quote reference JC25041702 when contacting the office ***

Marian Place, London. This delightful property offers a perfect blend of comfort and convenience, making it an ideal choice for individuals or couples seeking a stylish urban retreat.

Upon entering, you will find a well-appointed reception room that serves as a welcoming space for relaxation and entertaining. The room is filled with natural light, creating a warm and inviting atmosphere. The flat features one spacious bedroom, providing a peaceful sanctuary for rest and rejuvenation. The bathroom is thoughtfully designed, ensuring both functionality and comfort.

Situated in a vibrant area of London, this flat offers easy access to a variety of local amenities, including shops, cafes, and parks. The excellent transport links nearby make commuting a breeze, allowing you to explore all that this magnificent city has to offer.

This property is perfect for those who appreciate the charm of city living while enjoying the comforts of a well-designed home. Whether you are looking to buy or rent, this flat at 5 Marian Place is a wonderful opportunity not to be missed.



Council Tax Band:

