



## Fordwych Road, NW2

£658 Per week

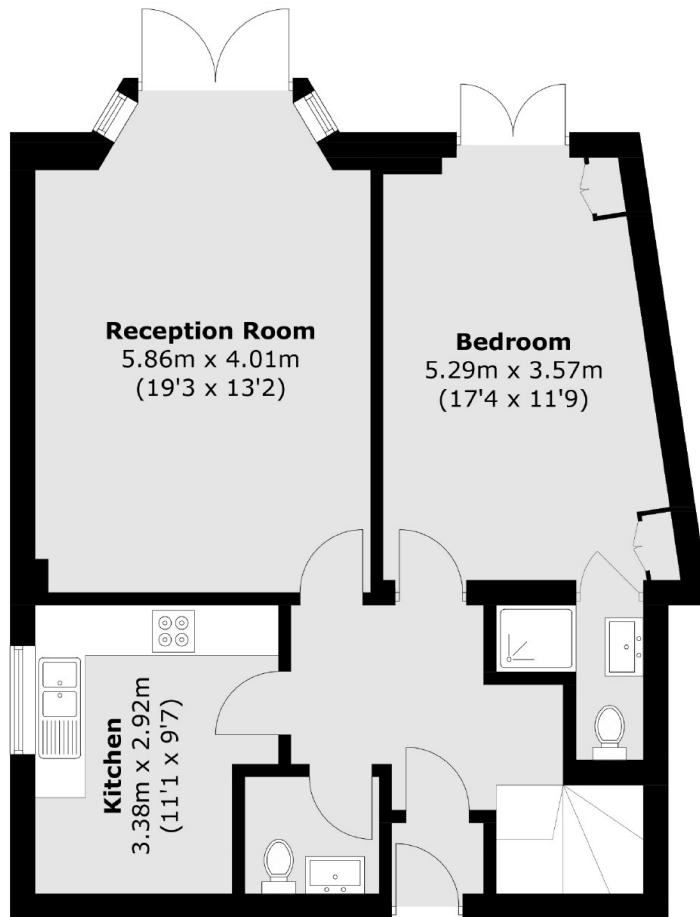
A spacious three bedroom duplex flat with a large private garden. Spread over two floors, the property features an eat-in kitchen, a bright reception room with patio doors opening onto a generous 25-foot garden. Ideal for a family.

Situated on the borders of West Hampstead, less than half a mile from West End Lane, with Kilburn Tube Station just around the corner.

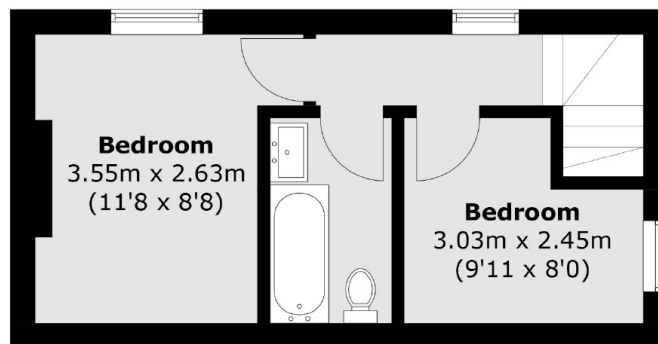
### Features

- Three Double Bedrooms
- Three Bathrooms
- Wooden Floors
- Separate Kitchen
- Duplex
- Private Garden

Fordwych Road,  
London, NW2



### Second Floor



### First Floor

Total area (approx.): 91.0 sq. m (979.5 sq. ft)