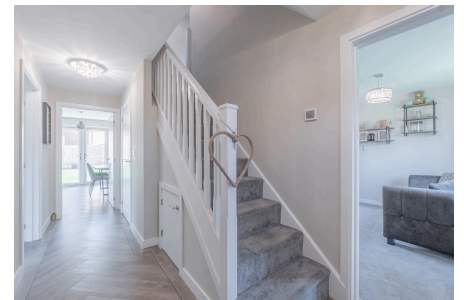


Tidbury Green, Solihull, B90 1US

Offers Over £575,000

3 3 2



Perfect Family Home – 3 Bed Corner Plot in Quiet Tidbury Green Setting

Key Features

- Detached family home on a generous corner plot
- Spacious accommodation throughout
- Three well-proportioned double bedrooms
- Contemporary family bathroom and guest W.C
- Double Garage
- Open views to the front elevation
- Modern breakfast kitchen with quartz worktops and AEG appliances
- Principal bedroom with stylish en-suite shower room
- Landscaped rear garden
- Ample driveway parking and double garage with bar/gym conversion

