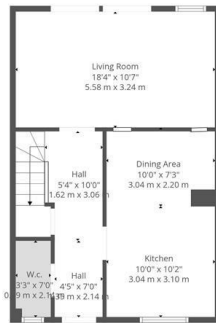
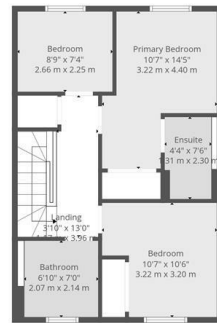


11 Hewitt Road, Warwick
Offers Over £400,000

charlesrose.



1st Floor



2nd Floor

Total: 1026 sq. Ft. 96 m2

1st Floor: 513 sq. Ft. 48 M2, 2nd Floor: 513 sq. Ft. 48 m2
Excluded Areas: Garage: 189 sq. Ft. 18 M2, Walls: 105 sq. Ft. 8 m2

Floor Plan Created By Cubicasa App. Measurements Deemed Highly Reliable But Not Guaranteed.



A stylish three-bedroom home built by Spitfire Homes, set on the popular Hewitt Road in the sought-after village of Barford. Featuring a spacious living room with bi-fold doors to the garden, modern kitchen/dining room, principal bedroom with en-suite, garage and private garden, all within easy reach of Warwick, Leamington Spa and the M40.

charlesrose.

- 01926 832411
- hello@charlesrose.co.uk
- charlesrose.co.uk

