



**Beechwood Close,
Exning, CB8 7EL
Guide Price £575,000**

MA
Morris Armitage

01638 560221

www.morrisarmitage.co.uk

Beechwood Close, Exning, CB8 7EL

An exceptional detached family home occupying a prime position on the edge of this superb and highly sought-after development and set in the desirable village of Exning.

Perfectly positioned on the Cambridgeshire/Suffolk border, Exning enjoys an enviable setting just moments from the historic racing town of Newmarket and approximately 13 miles from the city of Cambridge. Offering excellent connectivity via the A14, with links to the M11 towards London and the A11 eastbound, the village combines superb accessibility with an attractive range of local amenities, including a well-regarded primary school.

Beautifully enhanced and highly improved by the current owners, this outstanding home delivers stylish open-plan living with refined finishes and thoughtful design throughout. The impressive accommodation is introduced via a spacious reception hall and includes a stunning 33ft bespoke kitchen/dining/family room, ideal for both entertaining and modern family life, together with a dedicated study/home office and cloakroom, five generously proportioned bedrooms, including a luxurious reappointed en-suite, complemented by a modern family bathroom.

Externally, the property enjoys an enviable corner plot with beautifully established wraparound gardens offering a wonderful sense of privacy, driveway provides off road parking and leads to detached double garage.

Outstanding family home – viewing is highly recommended.

Entrance Hall

Spacious entrance hall with composite entrance door, wood effect flooring, radiator, door leading to:

Home Office

13'1" x 10'8"

With bay window to front aspect, radiator.

Cloakroom

With hidden cistern WC, hand basin with storage under, eye level storage cupboards, integrated washing machine, uPVC window to side aspect.

Kitchen / Dining / Living Room

32'9" x 26'10"

With double and single doors leading from the entrance hall. With wood effect flooring, uPVC window to front aspect and 3 uPVC windows and sliding doors to the rear aspect, radiators. Electric stove with limestone surround.

The kitchen is stylishly re-fitted with a range of wall and base units with quartz worktops over with a wealth of cabinets incorporating integrated eye level double oven, inset sink with mixer tap over. Integrated dishwasher, induction hob and gas wok burner with extractor over and wine fridge.

Lean-To

16'11" x 3'6"

Covered lean-to providing access to the garden.

FIRST FLOOR

Landing

Generous landing with uPVC window to front aspect, airing cupboard.

Master Bedroom

16'8" x 11'1"

With 2 x uPVC windows to rear aspect, radiator, wall mounted air conditioning unit, built in wardrobes, door leading to:

En-Suite Bathroom

Superbly refurbished and fully tiled, with low level WC, panelled bath with shower over and vanity hand basin. uPVC window to side aspect.

Bedroom 2

13'8" x 11'1"

With uPVC window to front aspect, built in wardrobe, radiator.

Bedroom 3

13'10" x 8'7"

With 2 uPVC windows to front aspect, built in wardrobe, radiator.

Bedroom 4

13'5" x 11'1"

With uPVC window to rear aspect, radiator.

Bedroom 5

10'1" x 6'11"

With uPVC window to rear aspect, radiator.

Bathroom

Modern fully tiled bathroom comprising walk in shower enclosure, low level WC, vanity hand basin, extractor fan.

OUTSIDE

The property is approached via a front garden laid mainly to lawn with paving and mature shrubs.

Being set in a corner plot, the walled garden benefits from various areas currently set up for seating, raised beds and play area.

To the rear is the double garage and driveway parking.

PROPERTY INFORMATION

EPC - C

Tenure - Freehold

Council Tax Band - E (West Suffolk)

Property Type - Detached House

Property Construction – Standard

Number & Types of Room – Please refer to the floorplan

Square Meters - 165 SQM

Parking – Driveway & Garage

Electric Supply - Mains

Water Supply – Mains

Sewerage - Mains

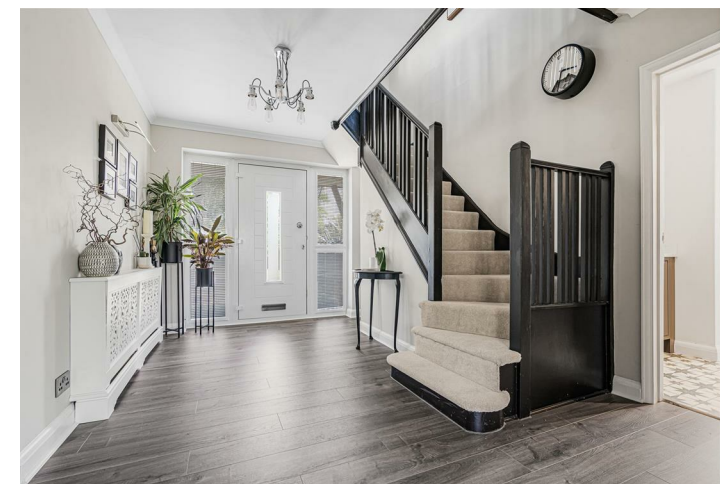
Heating sources - Gas

Broadband Connected - tbc

Broadband Type – Superfast available, 41Mbps download, 7Mbps upload

Mobile Signal/Coverage – Ofcom advise likely on all networks

Rights of Way, Easements, Covenants – None that the vendor is aware of

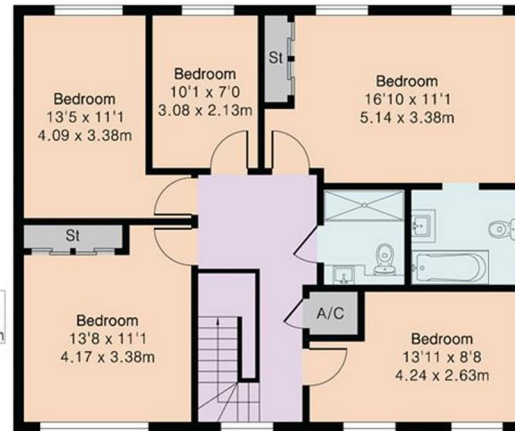
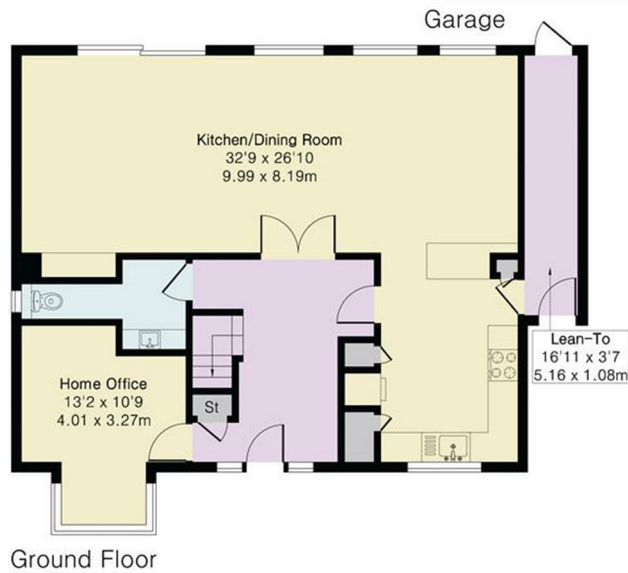
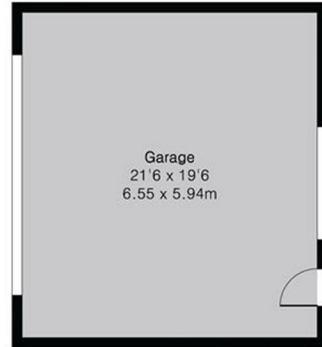


**Approximate Gross Internal Area 1853 sq ft - 172 sq m
(Excluding Garage)**

Ground Floor Area 972 sq ft – 90 sq m

First Floor Area 881 sq ft – 82 sq m

Garage Area 419 sq ft – 39 sq m



Ground Floor

First Floor

- Impressive Detached Family Home
- Highly Improved Open Plan Kitchen / Living / Dining Space
- 5 Bedrooms
- En-Suite Bathroom
- Walled, Corner Plot Garden
- Double Garage and Driveway



Energy Efficiency Rating	
Current	Potential
72	79
<small>Very energy efficient - lower running costs</small> (92 plus) A (81-91) B (69-80) C (55-68) D (39-54) E (21-38) F (1-20) G <small>Not energy efficient - higher running costs</small>	
England & Wales EU Directive 2002/91/EC	

Environmental Impact (CO ₂) Rating	
Current	Potential
<small>Very environmentally friendly - lower CO₂ emissions</small> (81-91) A (69-80) B (55-68) C (39-54) D (21-38) E (1-20) F <small>Not environmentally friendly - higher CO₂ emissions</small>	
England & Wales EU Directive 2002/91/EC	

This document and any marketing relating to the property has been prepared in good faith to give a fair overall view of the property and must not be relied upon as statements or representations of fact. It is suggested that undertake enquiries by inspections, survey or other investigation to ascertain the viability of any purchase. Any areas, measurements or distances referred to are given as a guide only and are not precise and no liability can be accepted for errors arising from them. Photographs are not necessarily comprehensive nor current; no assumption should be made that any contents shown are included in the sale. Morris Armitage have not tested any services or equipment and nothing in these particulars should be deemed to be a statement that they are in good working order nor that the property is in good structural condition.



