



Guide Price

£865,000

Freehold

5x  2x  3x 

**Stein Road,
Southbourne,
Hampshire, PO10**

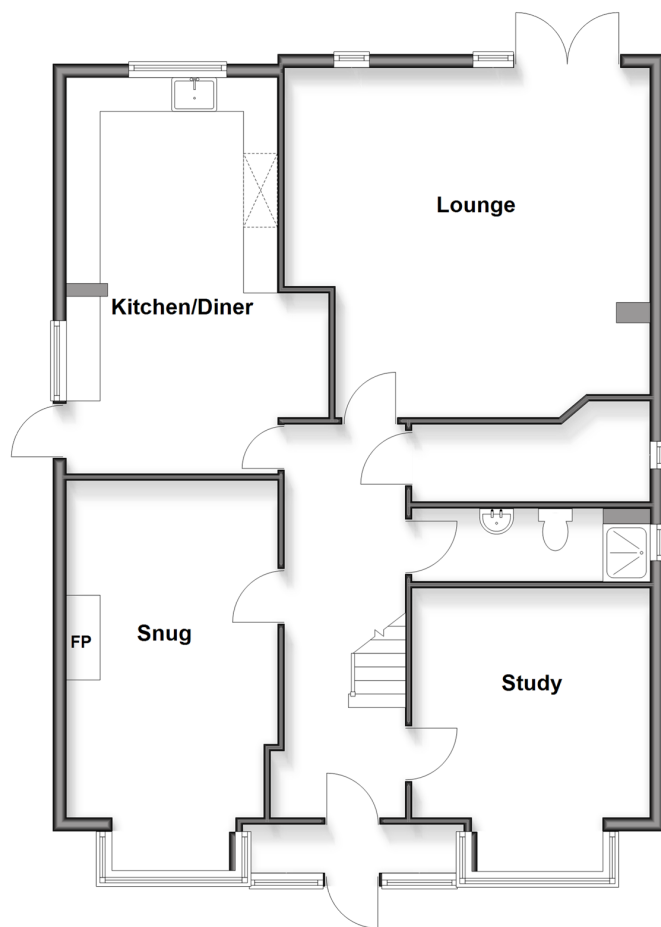
OVER 60?

Secure this property
for up to **59% less!**

cubitt & west
Helping you move forwards

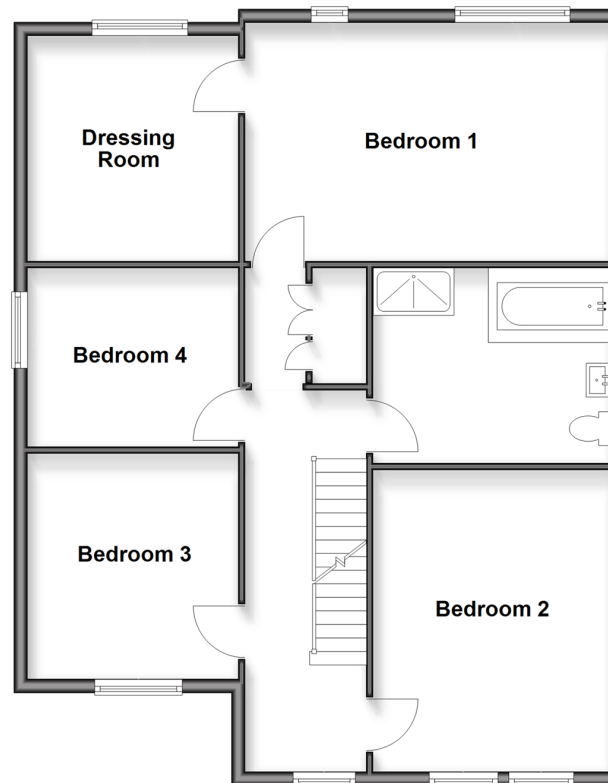
Ground Floor

Approx. 99.3 sq. metres (1069.2 sq. feet)



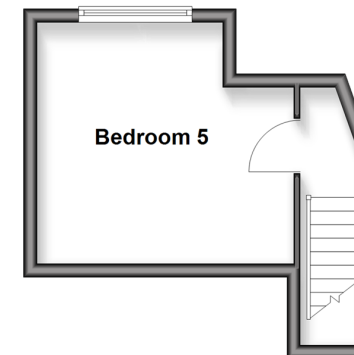
First Floor

Approx. 90.6 sq. metres (975.5 sq. feet)



Second Floor

Approx. 16.1 sq. metres (172.8 sq. feet)



Accommodation

GROUND FLOOR

Porch
Entrance Hall
Lounge: 18'0 x 15'9 (5.49m x 4.80m)
Kitchen/Diner : 19'6 x 12'8 (5.95m x 3.86m)
Snug: 15'0 x 10'0 (4.58m x 3.05m)
Study : 11'7 x 11'1 (3.53m x 3.38m)
Utility Room
Shower Room

FIRST FLOOR

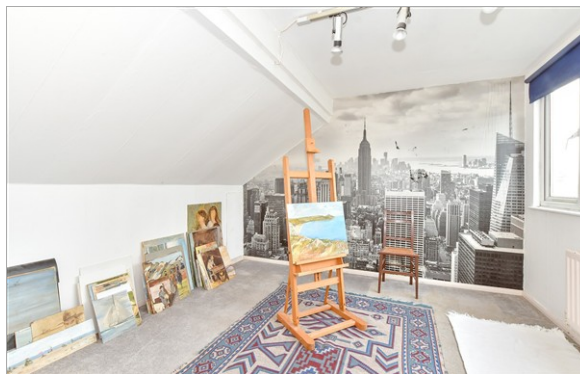
Landing
Bedroom 1 : 18'0 x 10'11 (5.49m x 3.33m)
Dressing Room : 10'7 x 9'9 (3.23m x 2.97m)
Bedroom 2 : 15'0 x 11'7 (4.58m x 3.53m)
Bedroom 3 : 10'10 x 10'1 (3.30m x 3.08m)
Bedroom 4 : 10'0 x 9'7 (3.05m x 2.92m)
Bathroom

SECOND FLOOR

Bedroom 5: 12'6 x 11'2 (3.81m x 3.41m)

OUTSIDE

Front & Rear Gardens
Driveway



Main features

- Spacious detached Edwardian Villa
- Original features throughout
- Three reception rooms
- Situated on an extensive plot
- Potential to extend further STP
- Driveway providing ample parking
- No forward chain



Nearest Schools

Primary Schools: Southbourne Junior School 0.1 miles, Chidham Parochial Primary 1.7 miles, Thorney Island Community Primary 1.9 miles

Secondary Schools: Bourne Community College 0.5 miles,



Transport Information

Train Stations: Southbourne 0.1 miles, Nutbourne 1.5 miles, Emsworth 1.7 miles



Address

Stein Road, Southbourne, Hampshire, PO10



Directions

For directions to this property please contact us.



cubitt&west
Helping you move forwards

Call Emsworth Branch 01243 377888 ■ cubittandwest.co.uk



- Legal advice should be taken to verify fixtures/fittings, planning, alterations and/or lease details
- Appliances & services are untested, dimensions are approximate and floor plans are not to scale
- Through a Homewise Home For Life Plan people aged 60+ can secure this property for up to 59% less, by purchasing a Lifetime Lease

EPC RATING

CURRENT: D(61) POTENTIAL: C(74)

44608150/20260227/SR/KC