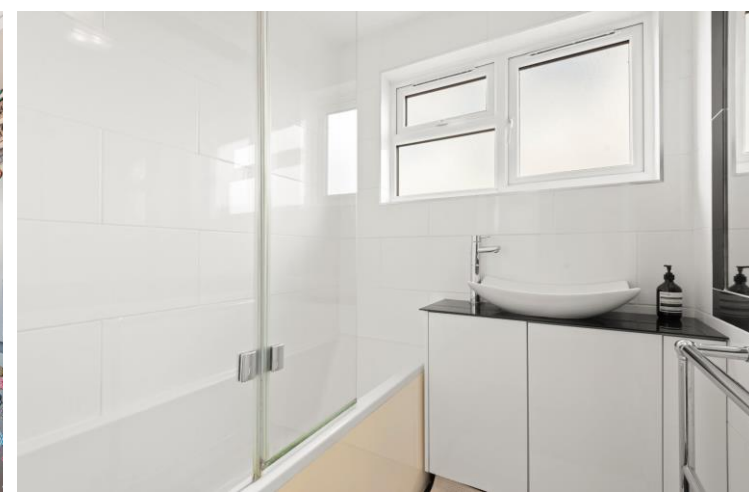




Burnfoot Avenue  
Fulham, SW6

CHESTERTONS





Luxurious 2-bedroom apartment located in the heart of a vibrant neighbourhood.

This modern flat boasts a spacious open-plan living area, perfect for entertaining guests. The property features high-end finishes throughout, including sleek wooden flooring and contemporary fixtures.

The master bedroom is spacious and equipped with all furniture, while the second bedroom is ideal for guests or a home office. Residents will enjoy the convenience of private parking, ensuring hassle-free city living.

With excellent transport links nearby, including bus stops and train stations, commuting is a breeze. Local amenities such as shops, restaurants, and parks are just a stone's throw away, providing convenience and leisure options.

Don't miss this opportunity to live in style and comfort in this desirable location. Contact us today to arrange a viewing.

- Two Bed
- One Bath
- Private Parking
- Furnished/Unfurnished
- Long Let

### £3,000 pcm

Additional tenant charges apply (fees apply to non-AST tenancies only)

Tenancy Agreement Fee: £300

References per Tenant/Guarantor: £60

Inventory check (approx. £100 – £250 inc. VAT)

[chestertons.co.uk/property-to-rent/applicable-fees](https://www.chestertons.co.uk/property-to-rent/applicable-fees)

<b>Minimum Term:</b>	12 months
<b>Deposit Required:</b>	Five weeks
<b>Local Authority:</b>	Hammersmith & Fulham
<b>Council Tax Band:</b>	C
<b>EPC Rating:</b>	D

### *Chestertons Fulham Road Lettings*

654 Fulham Road

Fulham

London

SW6 5RU

[fulhamlettingsusers@chestertons.co.uk](mailto:fulhamlettingsusers@chestertons.co.uk)

02073849899

# Burnfoot Avenue, SW6

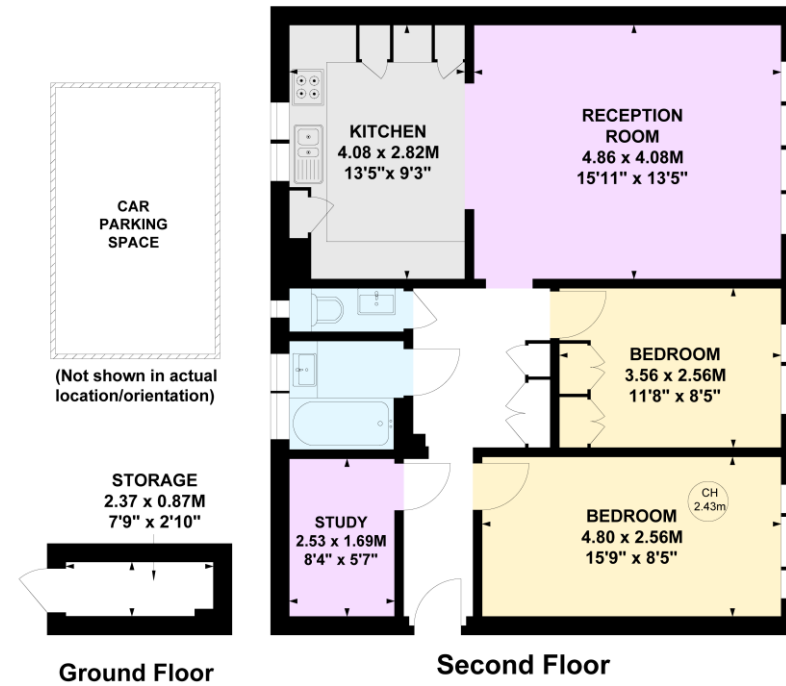
Approximate gross internal area

77.22 sq m / 831 sq ft

(Including Storage)

Storage : 2.02 sq m / 22 sq ft

Key :  
CH - Ceiling Height



This plan is not to scale and must be used as layout guidance only. All measurements and areas are approximate and should not be relied upon to provide accurate information. This plan must not be relied upon when making property valuations, design considerations or any other such relevant decisions. We accept no responsibility or liability (whether in contract, tort or otherwise) in relation to any loss whatsoever arising from or in connection with any use of this plan or the adequacy, accuracy or completeness of it or any information within it.

Chesterton UK Services Limited trading as Chestertons for themselves and for the vendor of this property whose agents they are, give notice that (i) these particulars do not constitute any part of an offer or contract, (ii) all statements contained within these particulars are made without responsibility on the part of Chestertons or the vendor, (iii) whilst made in good faith, none of the statements contained within these particulars are to be relied upon as a statement or representation of fact, (iv) any intending purchasers must satisfy themselves by inspection or otherwise as to the correctness of each of the statements contained within these particulars, (v) the vendor does not make or give either Chestertons or any person in their employment any authority to make or give representation or warranty whatsoever in relation to this property. Wide angle lenses may be used. ©Copyright Chestertons | Chesterton Global Ltd | Registered Office 40 Connaught Street, Hyde Park, London W2 2AB Registered Company Number 05334580.



This paper is  
100% recyclable