

# 51 Manor Ash Drive - Guide Price £258,000

Bury St. Edmunds Suffolk IP32 7HN

**shires**

Estate & Letting Agents



**shires**

**SOLD<sub>STC</sub>**

**01284 760770**

[www.abbeysalesandlettingsgroup.co.uk](http://www.abbeysalesandlettingsgroup.co.uk)

*"Consistently providing outstanding service to our clients"*

## Features

- CHAIN FREE END OF TERRACE HOUSE
- END OF CUL DE SAC LOCATION
- SIDING ON TO A GREEN
- GARAGE AND DRIVE
- GAS HEATING & DOUBLE GLAZING
- THREE BEDROOMS
- FIRST FLOOR BATHROOM AND GROUND FLOOR CLOAKROOM
- BAY WINDOW TO SIDE WITH VIEWS ACROSS THE GREEN
- POPULAR AREA OF MORETON HALL
- CALL US NOW TO BOOK YOUR VIEWING



## The Property

Located at the end of a cul de sac in the sought-after area of Moreton Hall, this 3 bedroom end of terrace house has lovely views to the side over the adjacent green. The accommodation has gas fired central heating and double glazing and offers accommodation of Entrance Hall, Cloakroom, Sitting Room, Kitchen/Dining Room. To the first floor the property has Three Bedrooms and a Bathroom.

Outside, the property benefits from a garage with good eaves storage and a driveway, there is also an enclosed rear garden and the green to the side makes an idea area for children to play.

Being chain-free, this home presents a seamless opportunity for prospective buyers. Its prime location means you are close to local shops and schools, making daily life both convenient and enjoyable.

This end-terrace house on Manor Ash Drive is not just a property, due to the desirable location, it is sure to attract interest. Do not miss the chance to make this house your new home.

Please be aware that images of the property may have been digitally enhanced, edited, or staged using artificial intelligence, and may not reflect the current presentation or furnishings.



# shires

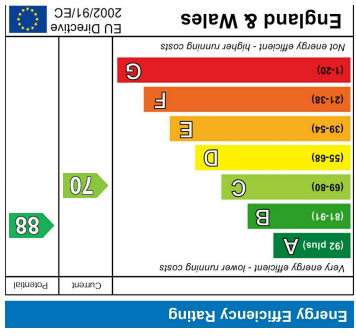
**SOLD<sub>STC</sub>**

**01284 760770**

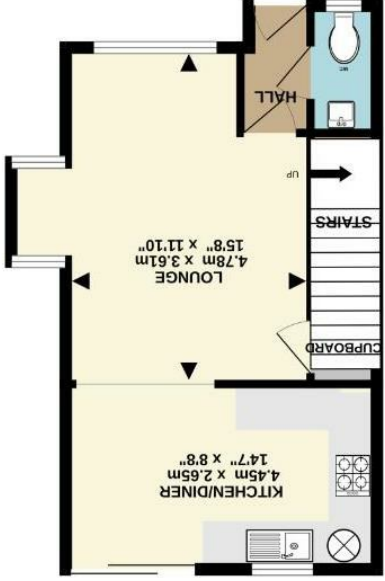
[www.abbeysalesandlettingsgroup.co.uk](http://www.abbeysalesandlettingsgroup.co.uk)



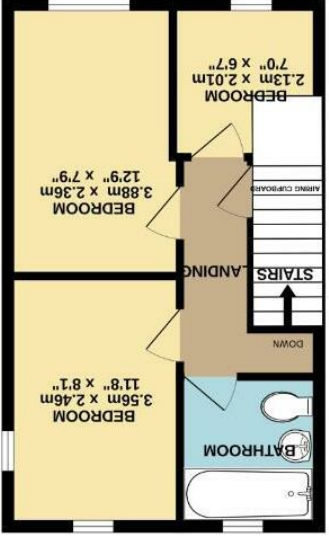
These sales particulars have been produced as a general guide only and we would draw to your attention that we have not carried out a detailed Survey of the property nor have we tested services, appliances or specific fittings. Whilst measurements and statements given within the details are provided in good faith, their accuracy should not be relied upon. If there are any points about which you may be uncertain or would like further clarification, we would suggest that you telephone this office and speak to our staff who will endeavour to assist you.



Whilst every attempt has been made to ensure the accuracy of the floorplan contained here, measurements of rooms, square metres and other items are approximate and no responsibility is taken for any error, omission or mis-statement. The plan is for illustrative purposes only and should be used as such by any prospective purchaser. The fixtures, systems and appliances shown have not been tested and no guarantee is given as to their operation or efficiency (see EPC).



GROUND FLOOR



1ST FLOOR