

75 Montagu Street, Kettering, Northamptonshire, NN16 8XQ  
Tel: 01536 517951 Email: info.kettering@primechoiceproperties.co.uk  
www.primechoiceproperties.co.uk



## Speight Crescent , Kettering, NN15 6FL

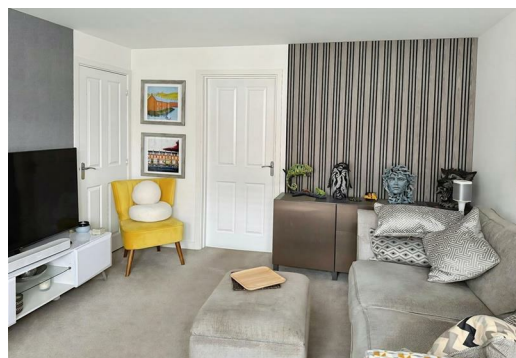
£1,400



Prime Choice Kettering are pleased to offer this beautifully presented three-bedroom home in the sought-after village of Barton Seagrave. With modern accommodation over two floors, the property features well-proportioned living space and contemporary finishes, making it an ideal choice for tenants seeking a stylish, comfortable home in a convenient location.

The ground floor welcomes you with a bright entrance hallway leading to a spacious living room, perfect for relaxing or entertaining. To the rear of the property is a contemporary open-plan kitchen and dining area, fully fitted with integrated appliances, with French doors opening directly onto the private rear garden, allowing plenty of natural light and creating an excellent indoor-outdoor living space. A convenient downstairs cloakroom/WC and additional storage complete the ground floor.

Upstairs, the property offers three well-proportioned bedrooms, including a generous principal bedroom with en-suite shower room. A further double bedroom, single bedroom/home office, and a modern family bathroom serve the first floor.



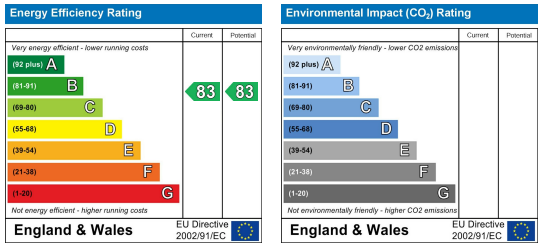
### Area Map



### Floor Plans



### Energy Efficiency Graph



These particulars, whilst believed to be accurate are set out as a general outline only for guidance and do not constitute any part of an offer or contract. Intending purchasers should not rely on them as statements of representation of fact, but must satisfy themselves by inspection or otherwise as to their accuracy. No person in this firm's employment has the authority to make or give any representation or warranty in respect of the property.

