



Cleveland Street, W1T

£692 Per week

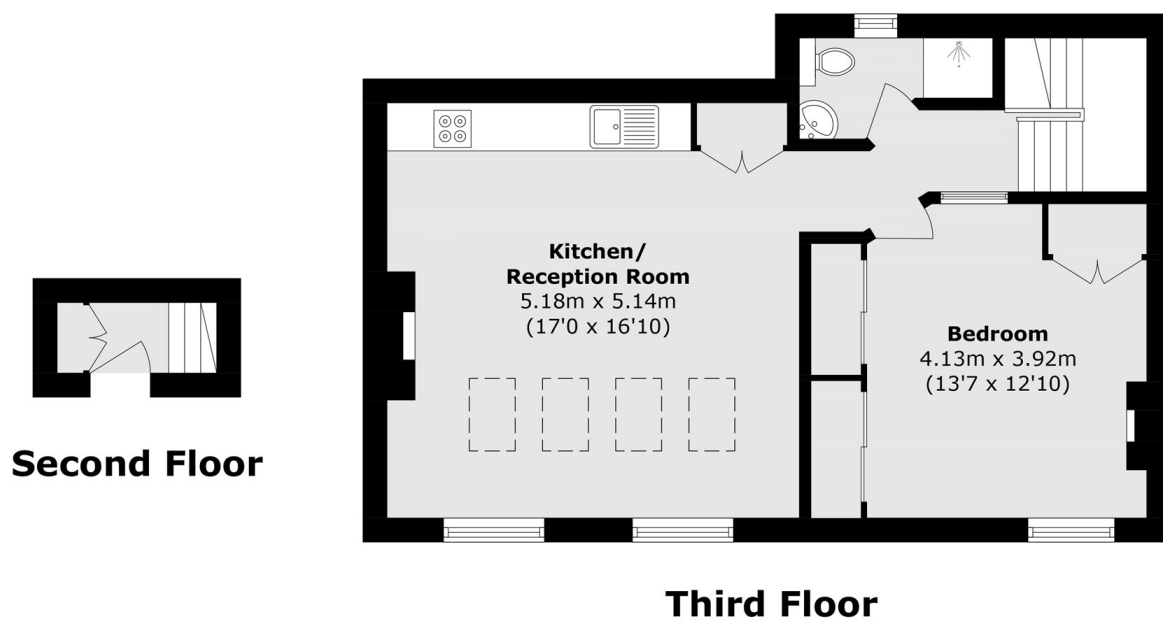
This modern one bedroom property is situated across the second and third floor in a lovely period conversion. It features a generously sized bedroom, a modern bathroom, and an open-plan living space with a fully fitted kitchen with wooden floors throughout.

Moments from Fitzrovia's cafés and restaurants and the stations at Goodge Street and Tottenham Court Road. London's West End is accessible on foot.

Features

- One bedroom
- Wooden Floors
- Top floor flat
- Great location
- Modern
- Bright

Cleveland Street, London, W1T



Total area (approx.): 54.4 sq. m (585.6 sq. ft)